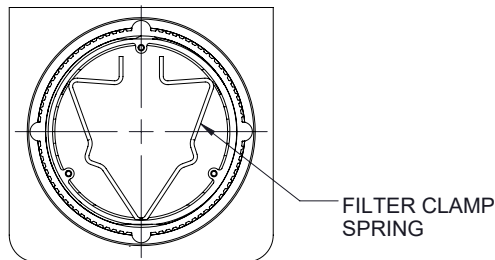
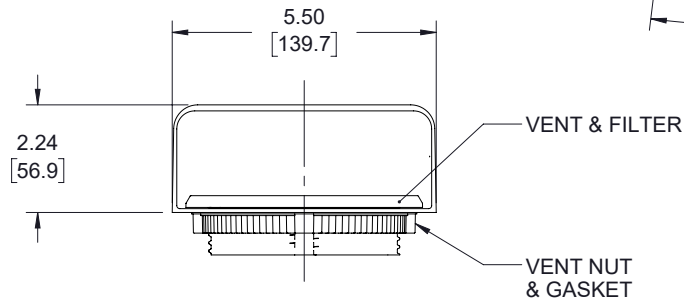
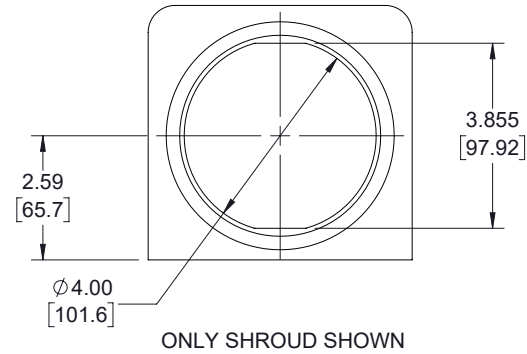
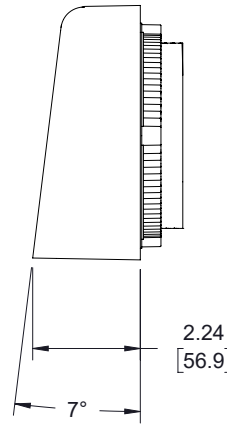
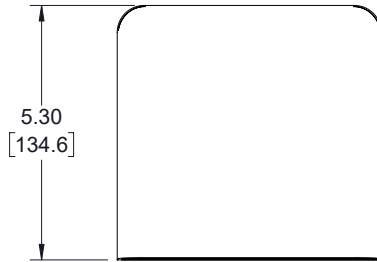



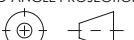
THE INFORMATION CONTAINED IN THIS DRAWING IS THE SOLE
PROPERTY OF TRANSECTOR, INC.. ANY REPRODUCTION IN PART OR WHOLE
WITHOUT THE WRITTEN PERMISSION OF TRANSECTOR, INC. IS PROHIBITED.

REVISIONS			
REV	DESCRIPTION	DATE	APPROVED
A	INITIAL RELEASE	11/06/2019	MMARTINEZ



SHROUD MATERIAL:
POLYCARBONATE (DARK GRAY)

KIT CONTAINS 1:
SHROUD, VENT, FILTER, GASKET, & VENT NUT

UNLESS OTHERWISE SPECIFIED, DIMENSIONS ARE IN INCHES [mm]		APPROVALS		DATE		 TRANSECTOR an INFINITI® brand		10701 Airport Road, Hayden, ID 83835 Phone: 1.208.635.6400 Fax: 1.208.955.2041		
OVERALL CABLE LENGTH TOLERANCE: ≤12 [305] = +1 [25] / -0 >12 [305] ≤60 [1524] = +2 [51] / -0 >60 [1524] ≤120 [3048] = +4 [102] / -0 >120 [3048] ≤300 [7620] = +6 [152] / -0 >300 [7620] = +5% / -0		DRAWN BY DZINN		11/06/2019		CATEGORY		ENCLOSURE		
		CHECKED BY DFRISIELLO		11/06/2019						
		APPROVED BY MMARTINEZ		11/06/2019						
ALL OTHER DIMENSIONAL TOLERANCES: .X = ± .2 [5] FRACTIONS .XX = ± .02 [.5] ± 1/32 .XXX = ± .005 [.13] ANGLES ± 1°		CONFIGURATION DETAILS OF UNDIMENSIONED FEATURES MAY VARY		PRODUCT DESCRIPTION Fan Shroud Vent Filter Kit Gray - one pc						
THIRD-ANGLE PROJECTION 		COLOR VARIATIONS MAY OCCUR		SIZE A		CAGE CODE 30992		DWG. NO. TEPC-FV1		REV. A
				SCALE: NONE		CAD FILE: TEPC-FV1.SLDDRW				SHEET 1 OF 1