

14x12x07 Fiberglass Reinf Polyester FRP Weatherproof Outdoor IP66 NEMA 4 Enclosure, Modified Base Drilled Mount Gray



TEF141207-01

Features

- Molded Fiberglass Reinforced Polyester (FRP) industrial enclosure
- Stainless steel quick release latches with padlock hasps
- NEMA Type 4 / IP66 rated*
- Fully gasketed raised lid & integral mounting flange
- Includes drilled aluminum mounting plate with AC socket cutouts

Applications

- Remote wireless LAN WiFi equipment installations
- Indoor and outdoor installations
- Rapid deployment installations
- Corrosive environments & hotspot
- Protection of equipment from theft or damage

Description

The box is a rugged weatherproof enclosure that is ideal for both indoor and outdoor applications. Constructed from molded fiberglass reinforced polyester, it is well suited for high temperature or corrosive environments. The integrated mounting flange allows it to be mounted directly to any flat wall surface provided proper screws are used into secure studs. The enclosure can also be mounted to a wide diameter range of poles with one of our optional pole mounting hardware kits. The raised lid features a stainless steel continuous hinge and stainless steel quick release latches with padlock hasps. Includes fully gasketed lid & integral mounting flange. The enclosure material is UV stabilized and comes in machine tool gray.

Mounting Plate

The modified aluminum mounting plate included with the TEF141207-01 comes with pre-drilled and cut holes to use as needed to mount WLAN equipment or whatever equipment you may require. The enclosure also features holes for two N-Bulkhead lightning protectors or connectors, a grounding lug, and a cable conduit connector.

The TEF-PMT series of pole mounting kits allow the populated enclosure to be securely mounted to a variety of different size poles.

Compatible versions include TEF-PMT13, TEF-PMT16, TEF-PMT28, TEF-PMT29, TEF-PMT30 & TEF-PMT33

*Note: Enclosure ports (cable conduit connector and N-type holes for lightning protectors or connectors) must be properly sealed to maintain NEMA Type 4 / IP66 rating

Mechanical Specifications

Size

| | | |
|--------------------|---------------------------------------|-------------|
| Outer Height | 15.5 in | [393.7 mm] |
| Outer Width | 13.32 in | [338.33 mm] |
| Outer Depth | 8.26 in | [209.8 mm] |
| Inner Height | 14 in | [355.6 mm] |
| Inner Width | 12 in | [304.8 mm] |
| Inner Depth | 7.95 in | [201.93 mm] |
| Weight | 10.6 lbs | [4.81 kg] |
| Enclosure Material | Fiberglass Reinforced Polyester (FRP) | |

Environmental Specifications

| | |
|--------------------------------|---------------|
| Temperature Continuous | -50 to +150°C |
| NEMA Rating | 4 |
| Ingress Protection (IP) Rating | IP66 |

Compliance Certifications

| | |
|-----------|----|
| UL Listed | No |
|-----------|----|

14x12x07 Fiberglass Reinf Polyester FRP
Weatherproof Outdoor IP66 NEMA 4 Enclosure,
Modified Base Drilled Mount Gray



TEF141207-01

Transtector Systems specializes in protection of highly sensitive, low voltage equipment through its patented, non-degrading silicon diode technology and custom filters. Our power quality expertise translates into a diverse product offering including AC, DC, and signal applications as well as integrated cabinets, power distribution panels and EMP hardened devices.

Click the following link (or enter part number in "SEARCH" on website) to obtain additional part information including price, inventory and certifications: [14x12x07 Fiberglass Reinf Polyester FRP Weatherproof Outdoor IP66 NEMA 4 Enclosure, Modified Base Drilled Mount Gray TEF141207-01](https://www.transtector.com/14x12x07-fiberglass-reinf-polyester-frp-weatherproof-outdoor-tef141207-01-p.aspx)

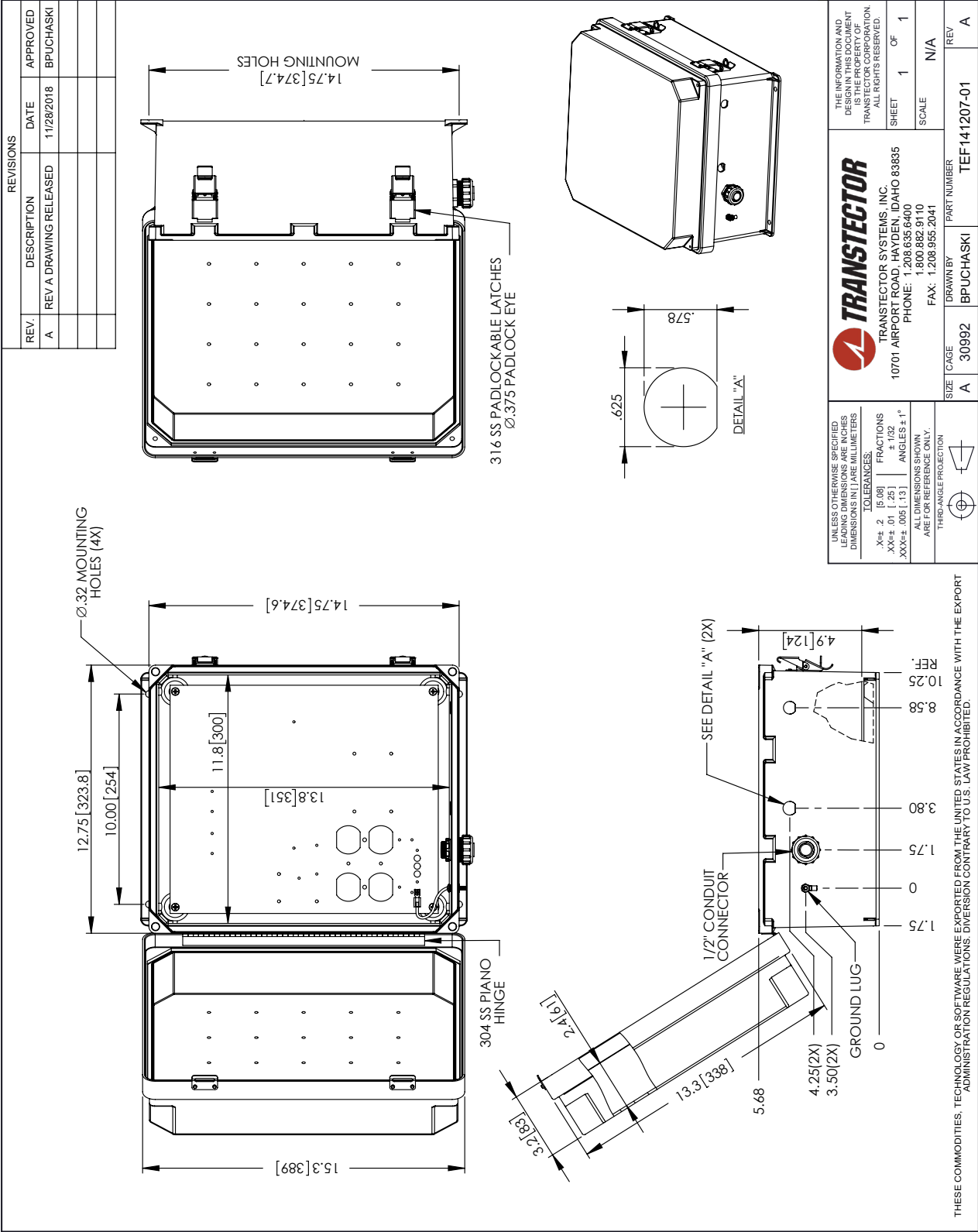
URL: <https://www.transtector.com/14x12x07-fiberglass-reinf-polyester-frp-weatherproof-outdoor-tef141207-01-p.aspx>

The information contained within this document is accurate to the best of our knowledge and representative of the part described herein. It may be necessary to make modifications to the part and/or the documentation of the part in order to implement improvements. Transtector reserves the right to make such changes as required. Unless otherwise stated, all specifications are nominal. Transtector does not make any representation or warranty regarding the suitability of the part described herein for any particular purpose, and Transtector does not assume liability arising out of the use of any part or document.

TEF141207-01 CAD Drawing

14x12x07 Fiberglass Reinf Polyester FRP Weatherproof Outdoor

IP66 NEMA 4 Enclosure, Modified Base Drilled Mount Gray



THESE COMMODITIES, TECHNOLOGY OR SOFTWARE WERE EXPORTED FROM THE UNITED STATES IN ACCORDANCE WITH THE EXPORT ADMINISTRATION REGULATIONS. DIVERSION CONTRARY TO U.S. LAW PROHIBITED.