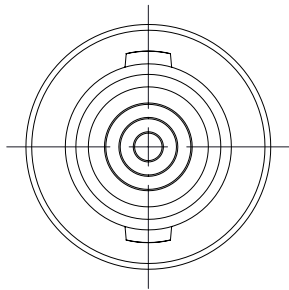
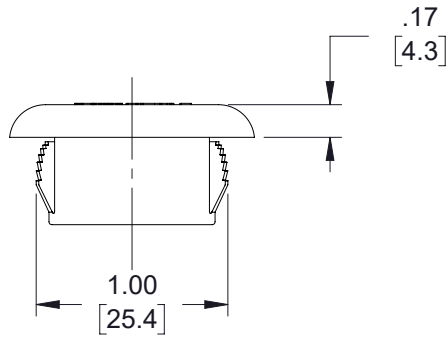
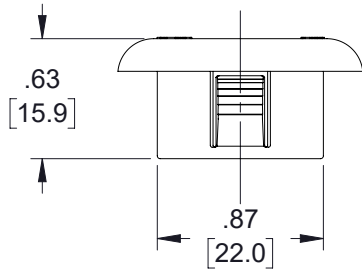
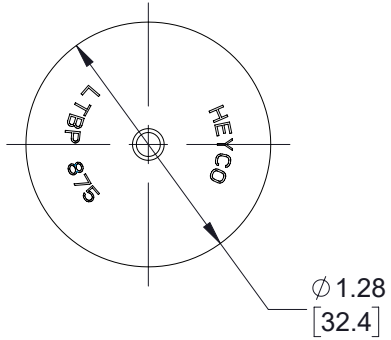
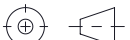



THE INFORMATION CONTAINED IN THIS DRAWING IS THE SOLE
PROPERTY OF TRANSECTOR, INC.. ANY REPRODUCTION IN PART OR WHOLE
WITHOUT THE WRITTEN PERMISSION OF TRANSECTOR, INC. IS PROHIBITED.

REVISIONS			
REV	DESCRIPTION	DATE	APPROVED
A	INITIAL RELEASE	11/05/2019	MMARTINEZ



<div>UNLESS OTHERWISE SPECIFIED, DIMENSIONS ARE IN INCHES [mm]</div> <div>OVERALL CABLE LENGTH TOLERANCE: ≤12 [305] = +1 [25] / -0 >12 [305] ≤60 [1524] = +2 [51] / -0 >60 [1524] ≤120 [3048] = +4 [102] / -0 >120 [3048] ≤300 [7620] = +6 [152] / -0 >300 [7620] = +5% / -0</div> <div>ALL OTHER DIMENSIONAL TOLERANCES: .X = ± .2 [5] FRACTIONS ± 1/32 .XX = ± .02 [.5] ANGLES ± 1° .XXX = ± .005 [.13]</div> <div>THIRD-ANGLE PROJECTION</div> <div></div>	APPROVALS	DATE	 an INFINITI® brand		10701 Airport Road, Hayden, ID 83835 Phone: 1.208.635.6400 Fax: 1.208.955.2041	
	DRAWN BY DZINN	11/05/2019				
	CHECKED BY DFRISIELLO	11/05/2019	CATEGORY ENCLOSURE			
	APPROVED BY MMARTINEZ	11/05/2019	PRODUCT DESCRIPTION Liquid Tight Hole Plug (.130-.450)			
CONFIGURATION DETAILS OF UNDIMENSIONED FEATURES MAY VARY			SIZE A	CAGE CODE 30992	DWG. NO. TE-HPLG-088	REV. A
COLOR VARIATIONS MAY OCCUR			SCALE: NONE		CAD FILE: TE-HPLG-088.SLDDRW	SHEET 1 OF 1