

EV Charging Cable, J1772, 32A, 18 foot

## EVCC-1772L232-18



### Features

- SAEJ1772 Charging Connector
- Accepts Single-Phase AC power up to 240Vac
- Control Pilot (CP) pin manages comms with EVSE
- Plug Present (PP) pin monitors physical connection with EVSE
- Locking Clip
- Dust Cover
- 18' Cable Length
- UL Certified

### Applications

- Level 1 and 2 Electric Vehicle Charging Stations (EVSE)
- Shopping Centers
- Convenience Stores
- Businesses
- Housing Units
- Entertainment Centers
- Parking Garages

### Description

Electric vehicle charging cable EVCC-1772L232-18 from Transtector is a UL2251 cable assembly that utilizes the SAEJ1772 type charging connector suitable for use in Level 1 or Level 2 electric vehicle charging stations. This charging cable accepts single-phase AC power up to 240Vac, delivers a maximum of 32 A of charging current to the EV, and is 18 feet in length to support the charging port locations in various EV models. Transtector EV charging cables are available in stock with same day shipping.

### Electrical Specifications

Description	Minimum	Typical	Maximum	Units
Service Voltages	120		240	Vac
Service Current			32	A
Service Type		Single-Phase		
Frequency		60		Hz
Maximum Continuous Operating Voltage (MCOV)				
L - L			300	Vac
L - N			150	Vac

### Mechanical Specifications

<b>Size</b>		
Height	3.94 in	[100.08 mm]

Click the following link (or enter part number in "SEARCH" on website) to obtain additional part information including price, inventory and certifications:  
[EV Charging Cable, J1772, 32A, 18 foot EVCC-1772L232-18](#)

EV Charging Cable, J1772, 32A, 18 foot

## EVCC-1772L232-18



Width	2.17 in	[55.12 mm]
Depth	216 in	[548.64 cm]
Weight	6 lbs	[2.72 kg]

### Environmental Specifications

Temperature Range (Operational)	-30 to +50 deg C
Temperature Range (Storage)	-30 to +65 deg C
Environmental Protection Rating	IP55

### Installation

Mount Type	Hardwired to EVSE
------------	-------------------

### Compliance Certifications

UL Compliant	Yes
Certifications	UL2251
	UL62

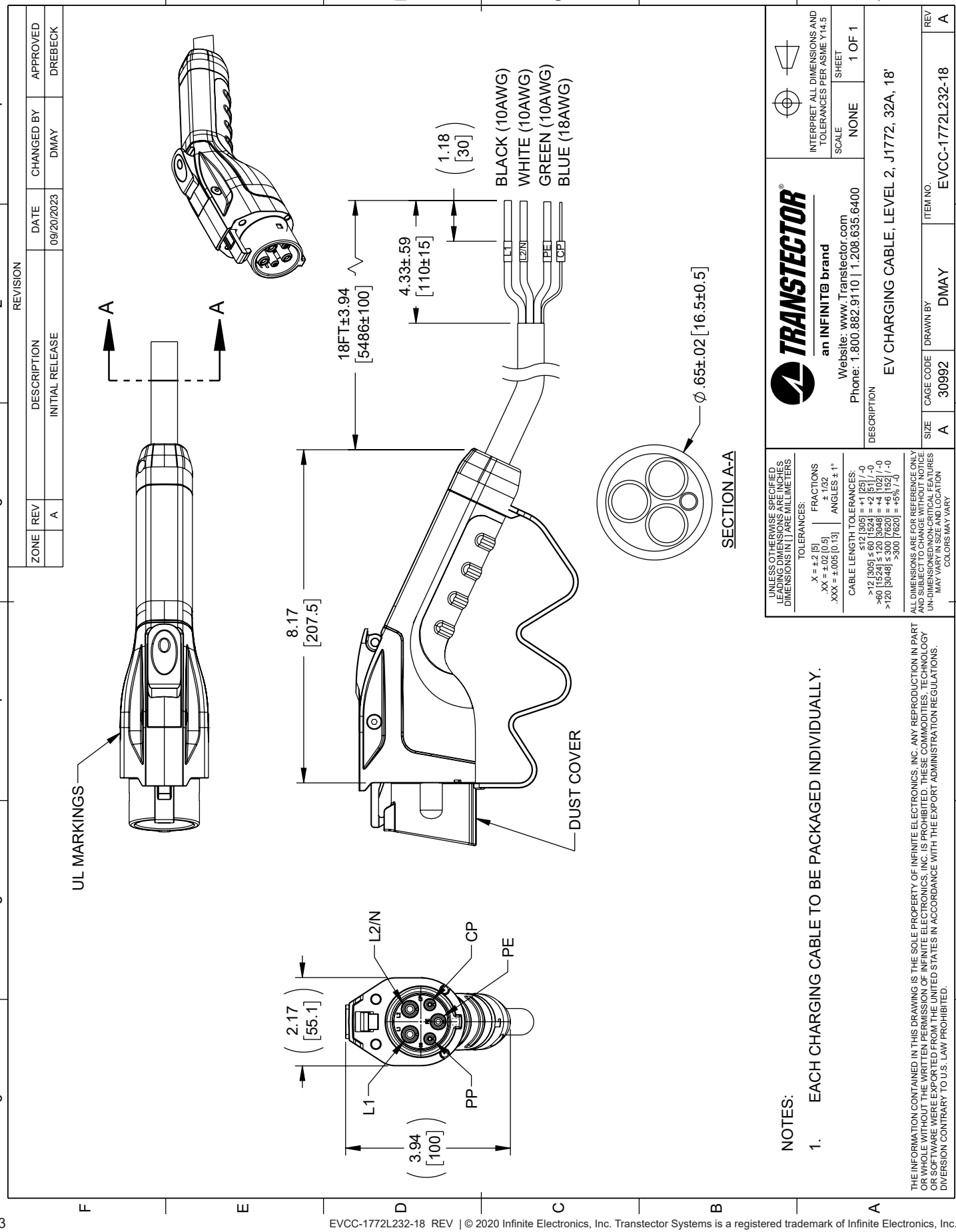
Transtector Systems specializes in protection of highly sensitive, low voltage equipment through its patented, non-degrading silicon diode technology and custom filters. Our power quality expertise translates into a diverse product offering including AC, DC, and signal applications as well as integrated cabinets, power distribution panels and EMP hardened devices.

Click the following link (or enter part number in "SEARCH" on website) to obtain additional part information including price, inventory and certifications: [EV Charging Cable, J1772, 32A, 18 foot EVCC-1772L232-18](#)

URL: <https://www.transtector.com/ac-surge-protector-spd-sp-plus-plug-evcc-1772l232-18-p.aspx>

The information contained in this document is accurate to the best of our knowledge and representative of the part described herein. It may be necessary to make modifications to the part and/or the documentation of the part, in order to implement improvements. Transtector reserves the right to make such changes as required. Unless otherwise stated, all specifications are nominal. Transtector does not make any representation or warranty regarding the suitability of the part described herein for any particular purpose, and Transtector does not assume any liability arising out of the use of any part or documentation.

EVCC-1772L232-18 CAD Drawing



NOTES:

1. EACH CHARGING CABLE TO BE PACKAGED INDIVIDUALLY.

THE INFORMATION CONTAINED IN THIS DRAWING IS THE SOLE PROPERTY OF INFINITE ELECTRONICS, INC. ANY REPRODUCTION IN PART OR WHOLE, WITHOUT THE WRITTEN PERMISSION OF INFINITE ELECTRONICS, INC. IS PROHIBITED. THESE COMMODITIES, TECHNOLOGY OR SOFTWARE WERE EXPORTED FROM THE UNITED STATES IN ACCORDANCE WITH THE EXPORT ADMINISTRATION REGULATIONS. DIVERSION CONTRARY TO U.S. LAW PROHIBITED.

<b>TRANSTECTOR</b> an INFINIT@ brand Website: <a href="http://www.Transtector.com">www.Transtector.com</a> Phone: 1.800.882.9110   1.208.635.6400		INTERPRET ALL DIMENSIONS AND TOLERANCES PER ASME Y14.5	
UNLESS OTHERWISE SPECIFIED LEADING DIMENSIONS ARE INCHES DIMENSIONS IN [ ] ARE MILLIMETERS		SCALE NONE	
TOLERANCES: .X = ±.2 [5] .XX = ±.02 [0.5] .XXX = ±.005 [0.13]		FRACTIONS ± 1/32 ANGLES ± 1°	
CABLE LENGTH TOLERANCES: ≤ 12 [305] ±.1 [2.5] >12 [305] ≤ 60 [1524] = ±.2 [5.1] >60 [1524] ≤ 120 [3048] = ±.4 [10.2] >120 [3048] ≤ 300 [7620] = ±.6 [15.2] >300 [7620] = ±.5% [7.6]		SHEET 1 OF 1	
ALL DIMENSIONS ARE FOR REFERENCE ONLY AND SUBJECT TO CHANGE WITHOUT NOTICE UN-DIMENSIONED NON-CRITICAL FEATURES MAY VARY IN SIZE AND LOCATION COLORS MAY VARY		DESCRIPTION EV CHARGING CABLE, LEVEL 2, J1772, 32A, 18'	
SIZE A	CAGE CODE 30992	DRAWN BY DMAY	REV A