

AC Surge Protector SPD I2R DIN-Rail 120 Vac Single-Phase SASD 10 kA, UL 1449 4th Ed., HazLoc

1104-15-000
IEP 120-10



Features

- Class I/Div II, ATEX
- 100% SASD Protection
- Visual Suppression Status Indicator
- Dry Contact Remote Annunciation Terminals
- Replaceable Suppression Modules
- DIN-Rail Mount

Applications

- Electrical Panelboards
- Industrial Automation
- Communications Base Stations
- IT & Data Centers
- Switchgear
- Motor Control Centers
- Automatic Transfer Switches
- Wastewater Treatment
- Oil & Gas
- LED Lighting
- Schools
- Hospitals

Description

AC surge protector (also known as SPD or lightning protector) 1104-15-000 from Transtector is a UL1449 4th Ed. DIN-Rail style SPD that utilizes state of the art SASD technology to protect critical equipment that operates on a 120 Vac Single-Phase electrical service. This surge protector provides effective protection against electrical transient surges that are generated both by external lightning events and by internal switching events and supports long-term system reliability by safely shunting high amounts of transient energy while maintaining a very low clamping voltage. Transtector AC surge protectors are available in stock with same day shipping.

Electrical Specifications

Description	Minimum	Typical	Maximum	Units
Service Voltages		120		Vac
Service Type		Single-Phase		
Frequency	50		60	Hz
Maximum Continuous Operating Voltage (MCOV)				
L - N			150	Vac

Surge Protection Specification

Description	Minimum	Typical	Maximum	Units
Surge Protection Technology		SASD		
Protection Modes		L-N/G		
8/20µs Surge Current			10	kA

Click the following link (or enter part number in "SEARCH" on website) to obtain additional part information including price, inventory and certifications:
[AC Surge Protector SPD I2R DIN-Rail 120 Vac Single-Phase SASD 10 kA, UL 1449 4th Ed., HazLoc 1104-15-000](#)

AC Surge Protector SPD I2R DIN-Rail 120 Vac Single-Phase SASD 10 kA, UL 1449 4th Ed., HazLoc

1104-15-000
IEP 120-10



Nominal Discharge Current Rating (In)	5	kA
VPR 8/20μs L - N	500	Vpk
Response Time	5	ns
SCCR (Short Circuit Current Rating)	22	kAIC

Mechanical Specifications

Size

Height	2.64 in	[67.06 mm]
Width	0.7 in	[17.78 mm]
Depth	3.54 in	[89.92 mm]
Weight	0.74 lbs	[335.66 g]
Housing Material and Plating	Black Plastic	

Environmental Specifications

Temperature Range (Operational)	-40 to +70 deg C
Humidity	95% non-condensing

Installation

Mount Type	DIN Rail
Service Wiring Terminal	Terminals #4 to #10 AWG

Compliance Certifications

RoHS Compliant	Yes
CE Compliant	Yes
UL Compliant	Yes
Hazardous Locations	Yes
Certifications	UL 1449 4th Ed. Class 1 Division 2 Groups A,B,C,D T6 Class 1 Zone 2 Aex ec IIC T6 Gc Class T6 Tamb -40C to +65C

Click the following link (or enter part number in "SEARCH" on website) to obtain additional part information including price, inventory and certifications:
[AC Surge Protector SPD I2R DIN-Rail 120 Vac Single-Phase SASD 10 kA, UL 1449 4th Ed., HazLoc 1104-15-000](#)

AC Surge Protector SPD I2R DIN-Rail 120 Vac Single-
Phase SASD 10 kA, UL 1449 4th Ed., HazLoc

1104-15-000
IEP 120-10



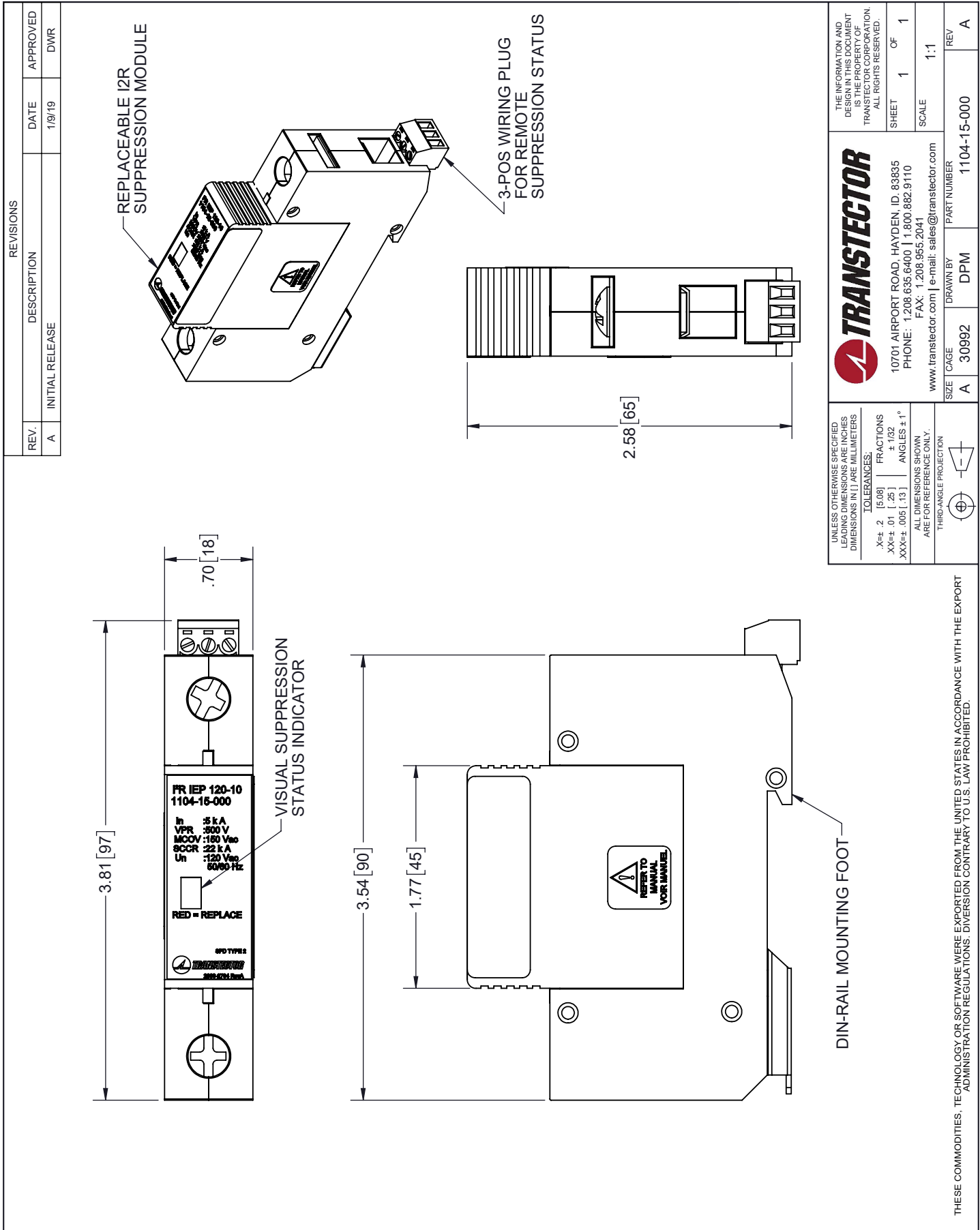
Transtector Systems specializes in protection of highly sensitive, low voltage equipment through its patented, non-degrading silicon diode technology and custom filters. Our power quality expertise translates into a diverse product offering including AC, DC, and signal applications as well as integrated cabinets, power distribution panels and EMP hardened devices.

Click the following link (or enter part number in "SEARCH" on website) to obtain additional part information including price, inventory and certifications: [AC Surge Protector SPD I2R DIN-Rail 120 Vac Single-Phase SASD 10 kA, UL 1449 4th Ed., HazLoc 1104-15-000](#)

URL: <https://www.transtector.com/ac-surge-protector-spd-i2r-din-rail-1104-15-000-p.aspx>

The information contained in this document is accurate to the best of our knowledge and representative of the part described herein. It may be necessary to make modifications to the part and/or the documentation of the part, in order to implement improvements. Transtector reserves the right to make such changes as required. Unless otherwise stated, all specifications are nominal. Transtector does not make any representation or warranty regarding the suitability of the part described herein for any particular purpose, and Transtector does not assume any liability arising out of the use of any part or documentation.

1104-15-000 CAD Drawing



THESE COMMODITIES, TECHNOLOGY OR SOFTWARE WERE EXPORTED FROM THE UNITED STATES IN ACCORDANCE WITH THE EXPORT ADMINISTRATION REGULATIONS. DIVERSION CONTRARY TO U.S. LAW PROHIBITED.

T-Rev A