

## AC Surge Protector SPD ACP Plug-In 240 Vac Single-Phase 15 A SASD

**1100-558**  
**ACP 200 BWM**



### Features

- 100% SASD Protection
- Suppression Status Lamp
- Hard-Wired
- Wall Mount

### Applications

- Electrical Panelboards
- Industrial Automation
- Communications Base Stations
- IT & Data Centers
- Switchgear
- Motor Control Centers
- Automatic Transfer Switches
- Wastewater Treatment
- Oil & Gas
- LED Lighting
- Schools
- Hospitals

### Description

AC surge protector (also known as SPD or lightning protector) 1100-558 from Transtector is a plug-in style SPD that utilizes state of the art SASD technology to protect critical equipment that operates on a 240 Vac Single-Phase electrical service. This surge protector provides effective protection against electrical transient surges that are generated both by external lightning events and by internal switching events and supports long-term system reliability by safely shunting high amounts of transient energy while maintaining a very low clamping voltage. Transtector AC surge protectors are available in stock with same day shipping.

### Electrical Specifications

Description	Minimum	Typical	Maximum	Units
Service Voltages		240		Vac
Service Type		Single-Phase		
Frequency	50		60	Hz
Current Rating			15	A
Maximum Continuous Operating Voltage (MCOV)				
L - N			250	Vac

### Surge Protection Specification

Description	Minimum	Typical	Maximum	Units
Surge Protection Technology		SASD		
Protection Modes		L-N/G		
Nominal Discharge Current Rating (In)		0.7		kA

Click the following link (or enter part number in "SEARCH" on website) to obtain additional part information including price, inventory and certifications:  
[AC Surge Protector SPD ACP Plug-In 240 Vac Single-Phase 15 A SASD 1100-558](#)

## AC Surge Protector SPD ACP Plug-In 240 Vac Single-Phase 15 A SASD

**1100-558**  
**ACP 200 BWM**



Vpl 8/20μs L-N	600 @ 500A	Vpk
Response Time	5	ns

### Mechanical Specifications

#### Size

Height	6.5 in	[165.1 mm]
Width	3 in	[76.2 mm]
Depth	2.7 in	[68.58 mm]
Weight	0.5 lbs	[226.8 g]
Housing Material and Plating	Noryl N190X	

### Environmental Specifications

Temperature Range (Operational)	-30 to +65 deg C
Humidity	90% non-condensing

### Installation

Mount Type	Panel
------------	-------

### Compliance Certifications

Certifications	NOM
----------------	-----

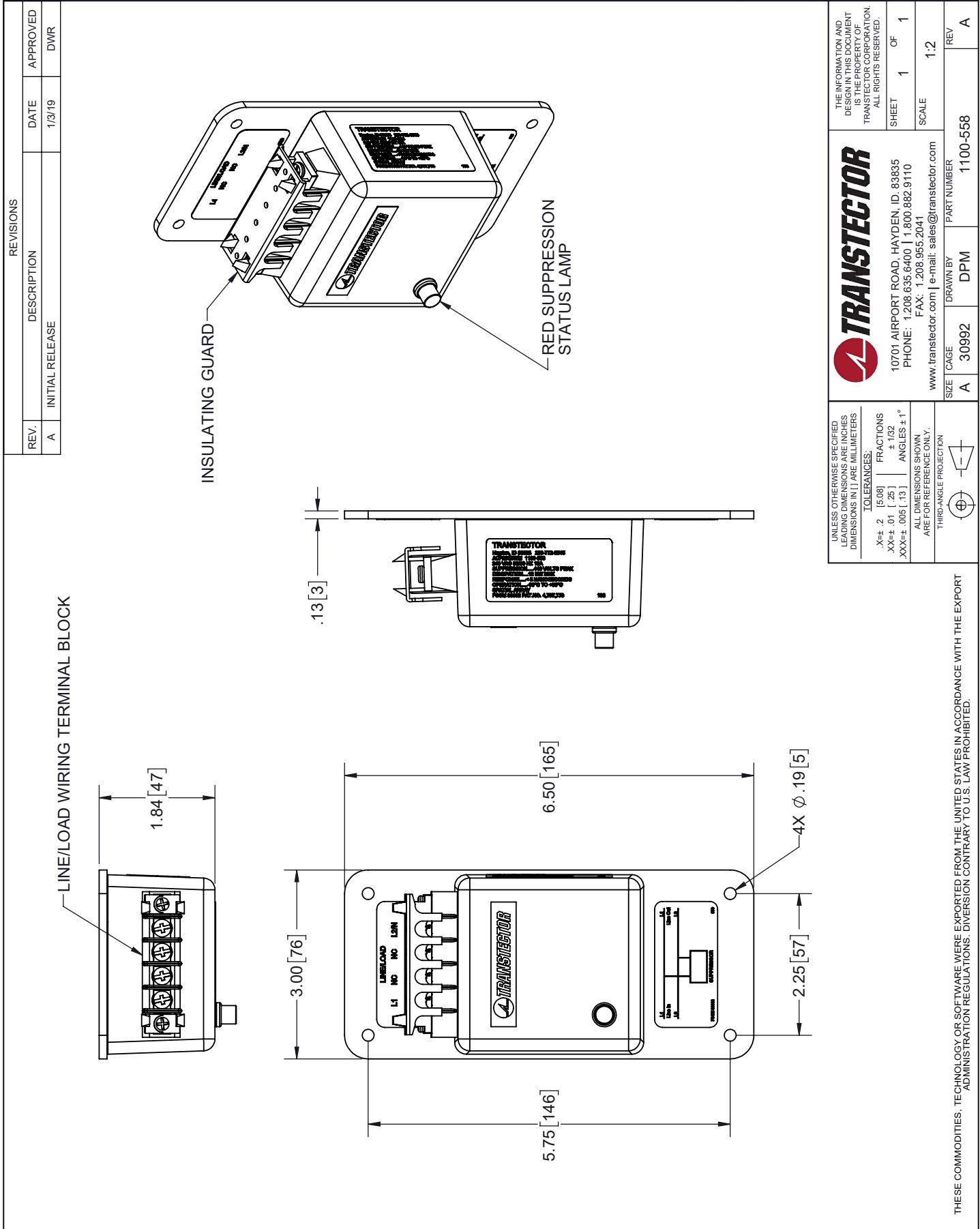
Transtector Systems specializes in protection of highly sensitive, low voltage equipment through its patented, non-degrading silicon diode technology and custom filters. Our power quality expertise translates into a diverse product offering including AC, DC, and signal applications as well as integrated cabinets, power distribution panels and EMP hardened devices.

Click the following link (or enter part number in "SEARCH" on website) to obtain additional part information including price, inventory and certifications: [AC Surge Protector SPD ACP Plug-In 240 Vac Single-Phase 15 A SASD 1100-558](https://www.transtector.com/ac-surge-protector-spd-acp-plug-in-1100-558-p.aspx)

URL: <https://www.transtector.com/ac-surge-protector-spd-acp-plug-in-1100-558-p.aspx>

The information contained in this document is accurate to the best of our knowledge and representative of the part described herein. It may be necessary to make modifications to the part and/or the documentation of the part, in order to implement improvements. Transtector reserves the right to make such changes as required. Unless otherwise stated, all specifications are nominal. Transtector does not make any representation or warranty regarding the suitability of the part described herein for any particular purpose, and Transtector does not assume any liability arising out of the use of any part or documentation.

1100-558 CAD Drawing

THESE COMMODITIES, TECHNOLOGY OR SOFTWARE WERE EXPORTED FROM THE UNITED STATES IN ACCORDANCE WITH THE EXPORT  
ADMINISTRATION REGULATIONS. DIVERSION CONTRARY TO U.S. LAW PROHIBITED.

T-Rev A