

SMALL CELL POWER DISTRIBUTION

MiniCab Series

Integrated Surge Protection

The MiniCab Series is engineered to provide AC power for remote located electronics. It offers all features of a commercial QO style electrical power load center wiring panel with added high exposure lightning protection for sensitive electrical equipment. Designed to support DAS, small cell radio and applications requiring a safe, reliable and compact power distribution solution.

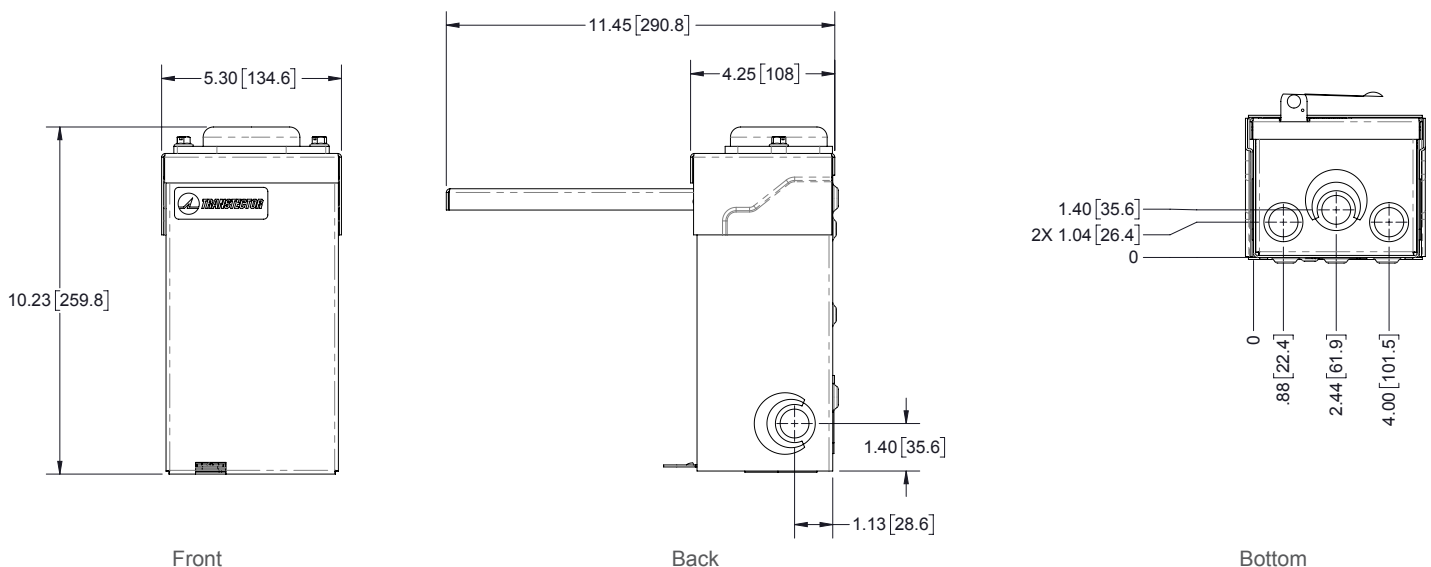


Features

- Compact footprint to reduce public visibility
- UL listed to meet local electrical codes
- Integrated power feed and surge protection device
- NEMA 3R enclosure
- Configurable options
- Indoor and outdoor installations
- Flexibility for pole, wall and H-frame mounting

- 1 NEMA 3R Enclosure
- 2 I2R IEP Silicon Surge Protection
- 3 Tandem Breakers
- 4 Neutral Bus bar
- 5 Bonding Kit
- 6 Grounding Location
- 7 Single Pole Breaker

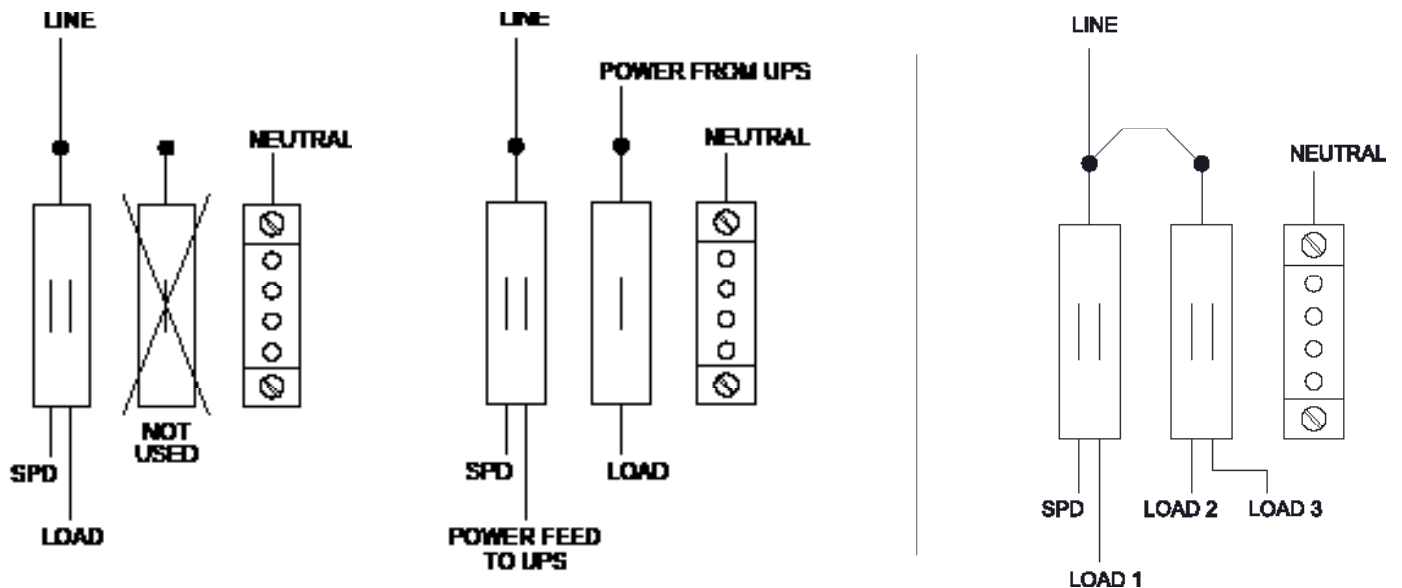
Technical Drawing



Specifications

Part Number	1101-1128	1101-1128-40	1101-1128-110	1101-1128-215
Breaker Configuration	2x 20A	1x 20A, 1x 40A	1x 20A, 1x 10A	3x 15A
Location	Indoor/Outdoor			
Application	Small Cell, DAS			
Service Options	120 Vac			
Short Circuit Current Rating	10 kAIC			
Phase	Single			
Surge Protection Device (SPD)	Transtector I2R IEP			
Surge Protection Technology	Silicon with Status Indicator			
Material	Aluminium			
Finish	Tin Plated			
Mount	Pole, Wall or H-Frame			
Standards	NEMA 3R, UL 67, UL 1449 4th Edition, IEEE C62-41			
Dimensions (H x W x D)	10.2" x 5.3" x 4.3"			
Weight	6 lbs			

Typical Wiring Diagrams



1101-1128, 1101-1128-40, 1101-1128-110
(2 Breaker Configuration)

1101-1128-215
(3 Breaker Configuration)

Ordering Information

For further information on custom configurations or to schedule a product demonstration of Transtector Systems Small Cell cabinet offering, contact us at 1.800.882.9110, 1.208.772.8515 or online at www.transtector.com.