



# Installation Manual

SC-2MMA9C Series Small Cell/5G

Compact Configurable AC Load Centers



## Contents

Warnings	2
Service Entrance Applications	2
Branch Breakers	3
Wiring Diagram	4
Wire Entry	6
Shunt Trip Option	7
Outlet Option	7
Surge Protection Option	7
Mounting	8
Pole Mount Accessory	8

## Warnings

- Apply appropriate personal protective equipment (PPE) and follow safe electrical work practices. See NFPA70E
- This equipment shall be located where accessible to and must only be installed and serviced by qualified electrical personnel.
- Turn off all power supplying this equipment before working on or inside equipment.
- Always use a properly rated voltage sensing device to confirm power is off.
- Replace all devices, doors, and covers before turning on power to this equipment.
- Failure to follow these instructions may result in death or serious injury.
- Only use CBI QL Series Branch Breakers.
- Branch Load not to exceed 80% of Main breaker.



### Danger

Each cabinet weighs approximately 20 lbs (9 kg). Ensure appropriate measures are taken to safely move cabinet to installation location.

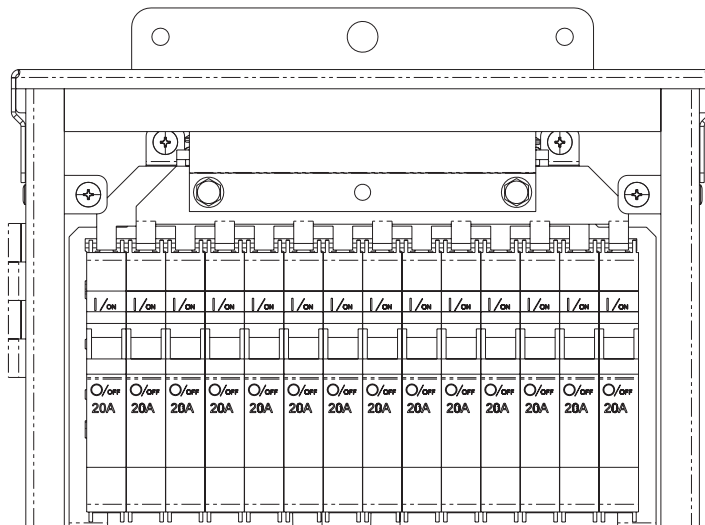
**Note:** Cabinets must be supported adequately at all times.

## Service Entrance Applications

This cabinet is suitable for use as Service Equipment with a 100 A main Breaker. A neutral-ground bond is required. Attach a green ground wire between the neutral and ground bus per NEC guidelines.

## Load Circuit Breakers

The SC-2MMA9C small cell / 5G protection cabinet series supports carrier co-location by supporting configurable, field-installable branch breakers.



**14 available branch breaker positions**

### To Remove a Load Circuit Breaker:

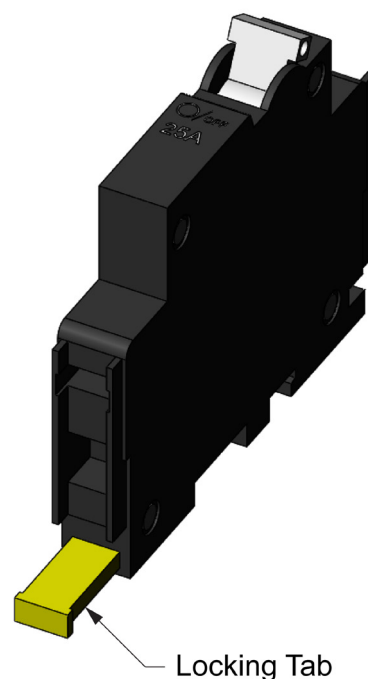
Loosen from bus bar, then using screw driver (or similar implement) pull out the yellow locking tab. The breaker will now slide out for easy replacement.

### To Install a Load Circuit Breaker:

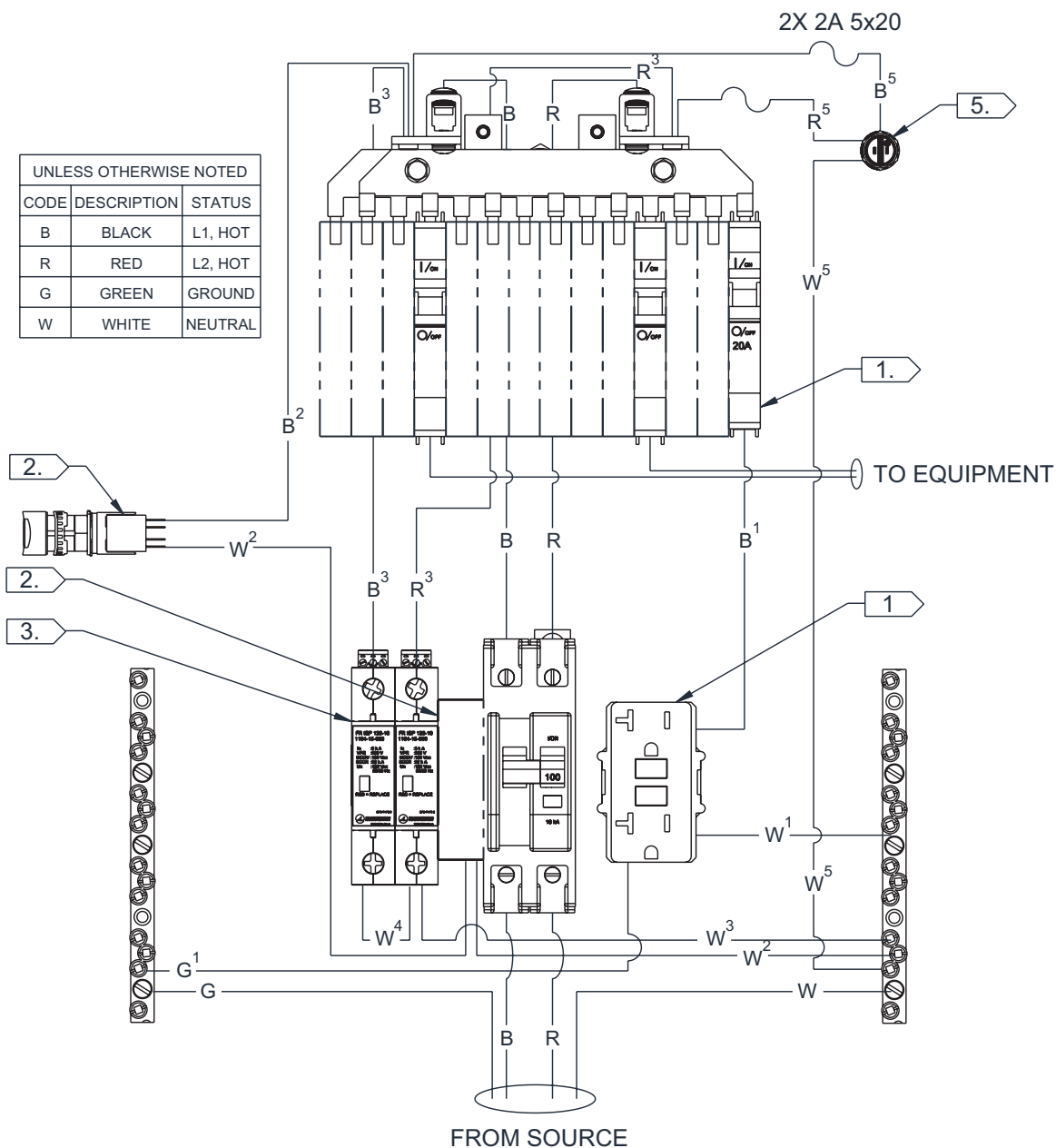
Ensure the terminal lug is fully opened then slide the breaker into the desired position. Torque lug to 25 in-lbs.

### Field Wiring Torque

Breaker	Wire Range	Torque
Main		
100A	12 - 2/0 AWG	45 - 50 in-lbs
Load Circuit Breakers		
1A, 5A, 7A, 10A, 15A, 20A, 25A, 15A 2P, 20A 2P, 25A 2P	2 AWG	35 in-lbs
	4 AWG	28 in-lbs
	18 - 6 AWG	20 in-lbs
	Bus Bar	25 in-lbs
Branch Circuit Breakers		
30A, 40A, 50A, 60A	6 - 4 AWG	27 in-lbs
	8 AWG	25 in-lbs
	10 AWG	20 in-lbs

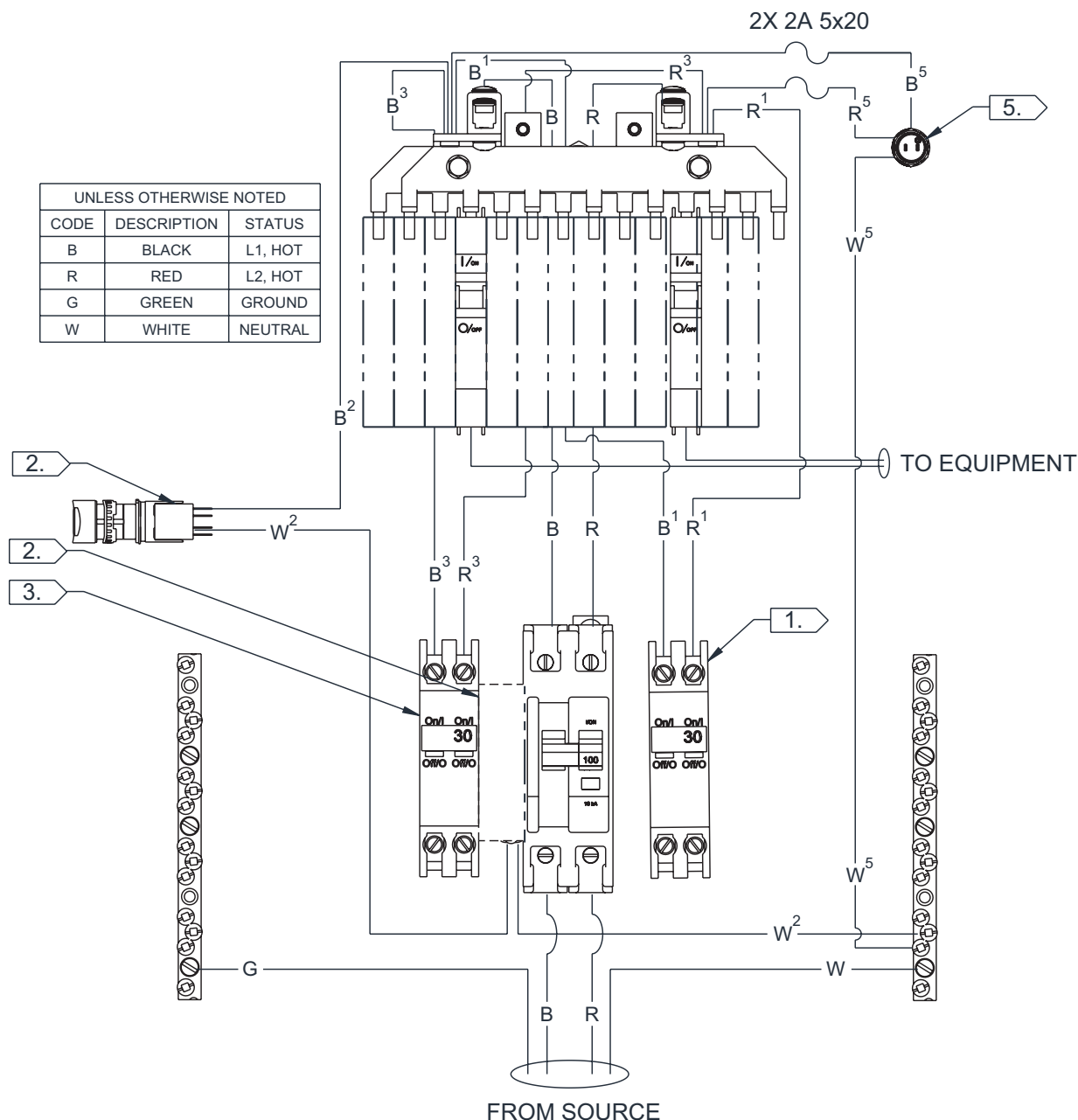


## Wiring Diagrams



### NOTES:

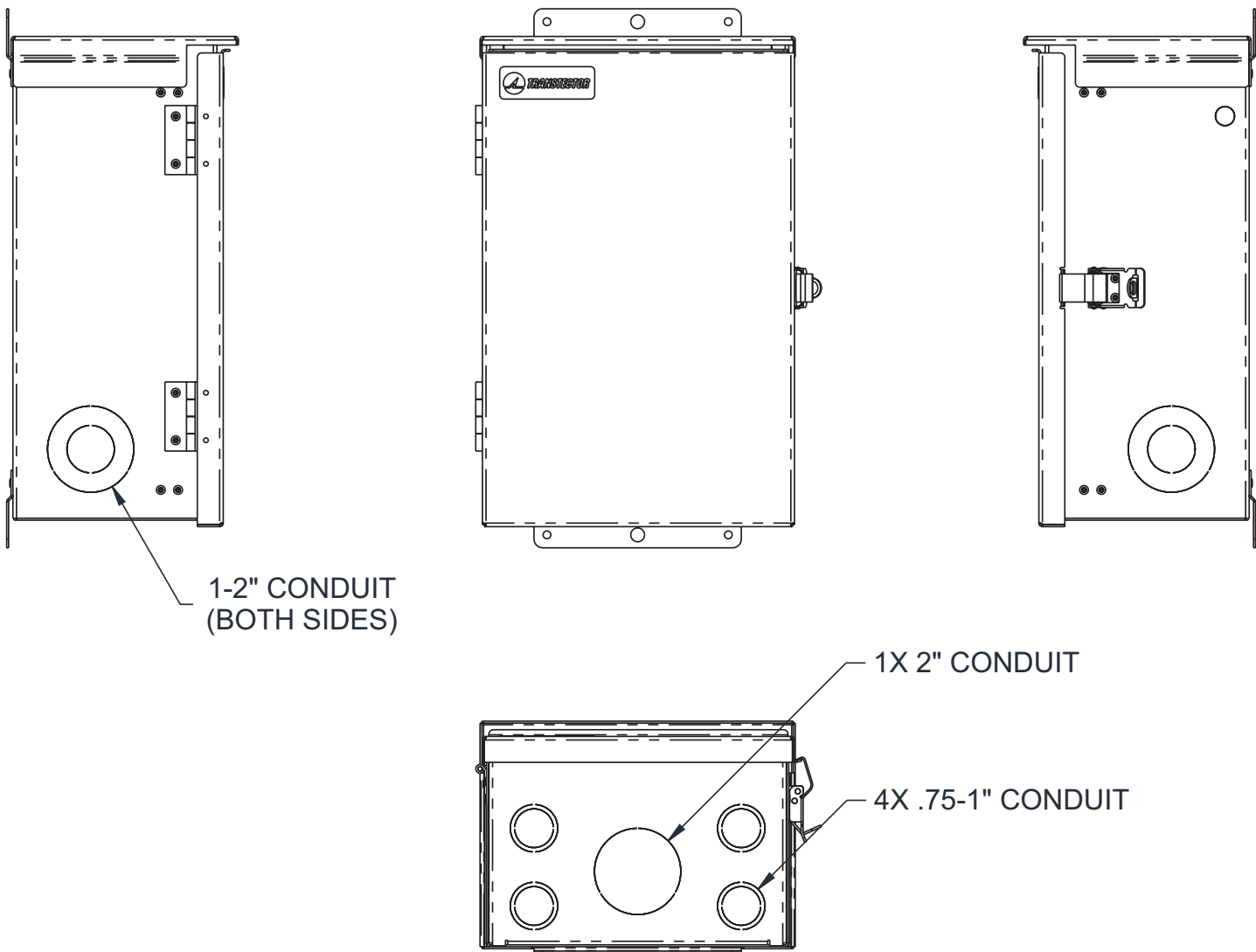
1. WIRES AND COMPONENTS ONLY PRESENT WHEN AN OUTLET IS SELECTED.
2. WIRES AND COMPONENTS ONLY PRESENT WHEN SHUNT TRIP IS SELECTED.
3. WIRES AND COMPONENTS ONLY PRESENT WHEN AN SPD IS SELECTED.
4. WIRE ONLY PRESENT WHEN IEP SPD IS SELECTED.
5. WIRES AND COMPONENTS ONLY PRESENT WHEN A MAIN POWER INDICATOR LIGHT IS SELECTED.



**NOTES:**

1. WIRES AND COMPONENTS ONLY PRESENT WHEN A 2P OUTPUT BREAKER IS SELECTED.
2. WIRES AND COMPONENTS ONLY PRESENT WHEN SHUNT TRIP IS SELECTED.
3. WIRES AND COMPONENTS ONLY PRESENT WHEN A 2P OUTPUT IS SELECTED.
4. WIRE ONLY PRESENT WHEN IEP SPD IS SELECTED.
5. WIRES AND COMPONENTS ONLY PRESENT WHEN A MAIN POWER INDICATOR LIGHT IS SELECTED.

Wire Entry



**Note:** Side entry may not be viable on certain cabinet configurations.

## Shunt Trip Option

If a Shunt Trip was selected, a push button switch on the front of the unit will be present. Pressing this button will trip the main breaker if the main breaker is in the “on” position.

## Outlet Option

If an auxiliary outlet option was selected, an additional dedicated 20A breaker will be present in the enclosure.

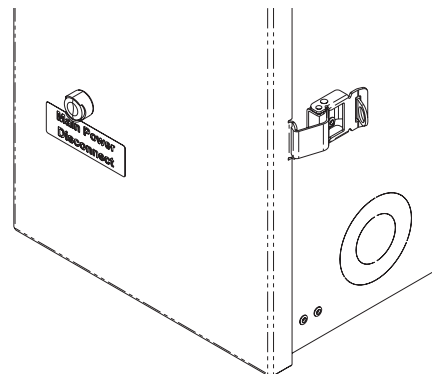
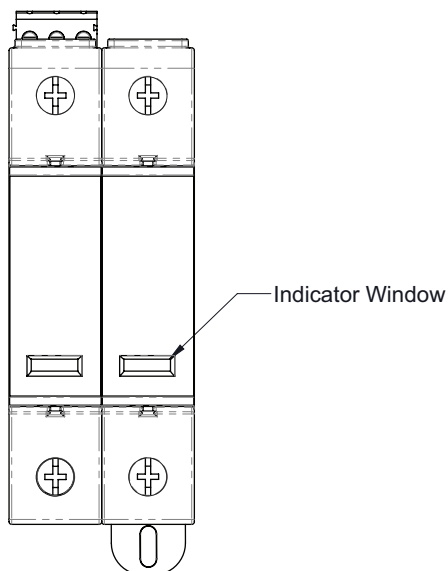
## Surge Protection Option

If a surge protection device was selected, it will have visual indicators regarding its Protection Status. If indicator is red, replace protection module.

**Note:** The surge protection device does not consume a branch breaker position.

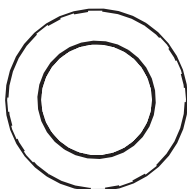
### Replaceable Modules:

- I2R-75KE240 MOV



## LED Indicator Light

If a Main Power Indicator Light was selected, a tri-color (RGY) LED will be present on the right side of the unit. The Main Indicator Light is protected by two 2A 5x20mm fuses. When both lines are powered, the LED will be illuminated Yellow. If L1 is powered but L2 is not, the LED will be illuminated Red. If L2 is powered but L1 is not, the LED will be illuminated Green.



Mounting

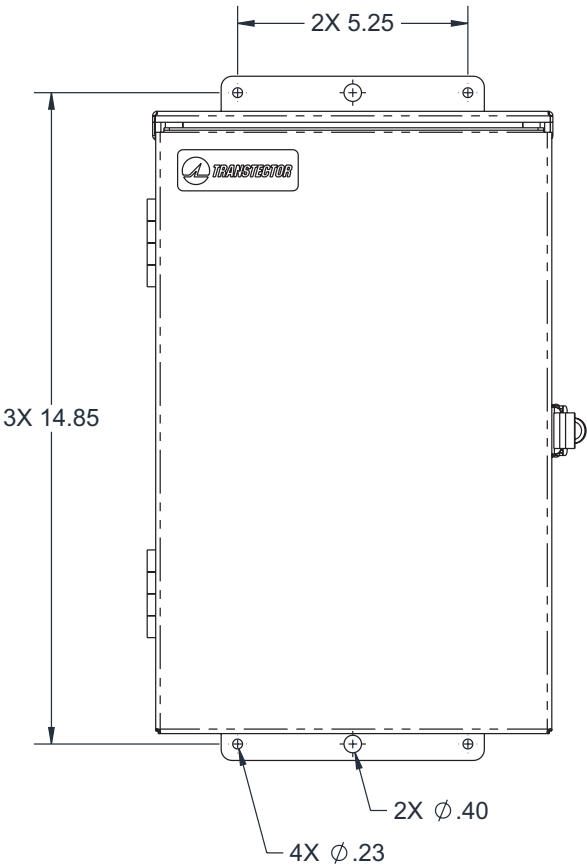
To mount the SC-2MMA9C Cabinet on a H-frame or wall, you will need the following:

- Wall anchors or materials for a H-frame
- Four #10 mounting bolts and nuts

Perform the following steps to mount the enclosure:

1. Construct and mount the H-frame per local practices, or install appropriate wall anchors.
2. Use appropriate lifting equipment to raise the cabinet into its mounting position and keep it supported.
3. Tighten bolts securely.

Alternately, the center holes on the bracket can be utilized with 3/8" hardware to mount the unit on a wooden pole.



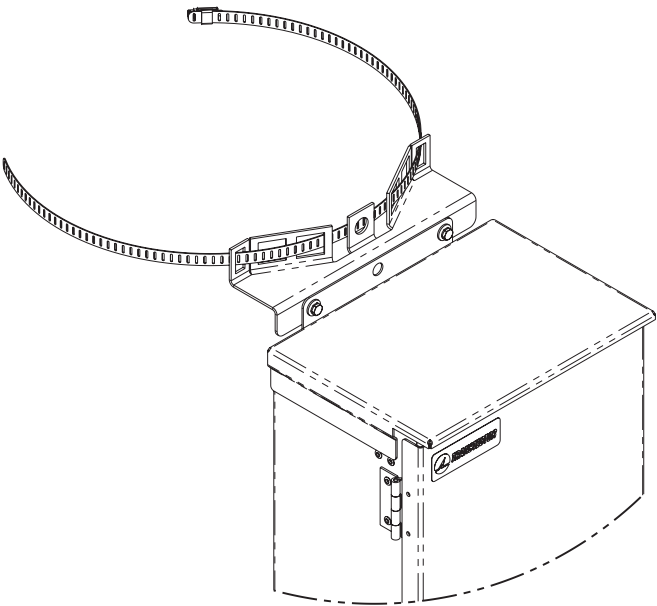
Pole Mount Accessory

For Pole Mounting, a V-Bracket Accessory kit is available (Part No. SC-POLE-KIT, sold separately).

Kit Contents

Quantity	Description
2	V-Bracket
2	Band Clamp
4	Bolt
4	Nut
4	Lock Washer
4	Flat Washer

1. Secure V-Bracket to cabinet using provided 10-32 Hardware, Torque bolts to 33±10% in-lbs.
2. Slide hose clamp or banding through slots on bracket.
3. Tighten per industry standard.





**About Transtector Systems:**

Transtector Systems, an Infinite Electronics brand, leads the industry with a comprehensive product portfolio and specialized expertise in consulting, design and manufacturing of AC, DC, data and signal surge protection, communications power cabinets, and EMP protection.

Transtector provides valuable end-to-end power and signal integrity solutions for markets that include telecommunications, medical imaging, transportation, energy, security and the military. Our goal is to support the urgent surge-protection requirements of our customers with responsive customer service, technical support and a wide-range of quality AC, DC and data line surge protection products in-stock and available for same-day shipping.

Contact us at +1 208 635 6400 or online at [www.transtector.com](http://www.transtector.com).

**About Infinite Electronics:**

Infinite Electronics is a leading global supplier of electronic components serving the urgent needs of engineers through a family of highly recognized and trusted brands. Our portfolio brands are specialists within their respective product set, offering broad inventories of engineering-grade product, paired with expert technical support and same day shipping. Over 100,000 customers across a diverse set of markets rely upon Infinite Electronics to stock and reliably ship urgently needed products every day.