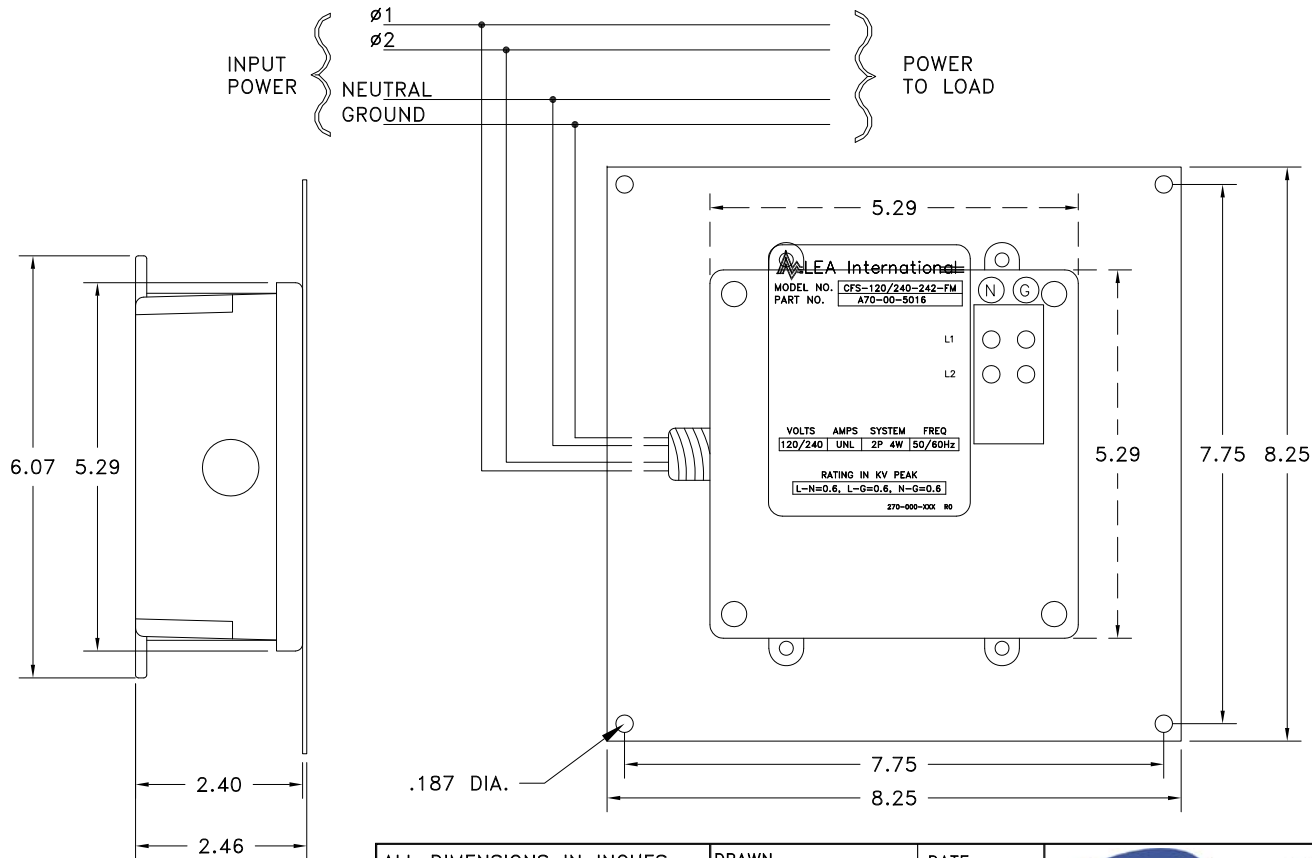


These Commodities, or technology are exported from the U.S. in accordance with the Export Administration Regulations. Diversion contrary to U.S. law prohibited.

# REVISIONS

LTR	DESCRIPTION	ECN NO.	DATE	APPROVED
0	PRODUCTION RELEASE		12/9/98	
B	REMOVE UL LOGO	6650	3/22/07	MPD



ALL DIMENSIONS IN INCHES (BEFORE PLATING) UNLESS OTHERWISE SPECIFIED.

## TOLERANCES:

FRACTIONS=± XX=±.020  
 ANGLES= ° XXX=±.010

## MATERIAL:

DRAWN  
 FOLKENSON

CHECKED

ENGRG APPD

PROJ APPD

APPROVED

DATE  
 12/9/98



**LEA International**

10701 Airport Road, Hayden, ID 83835  
 800.881.8506 208.762.6188 www.leaintl.com

TITLE CFS 120/240-242 FLUSH MOUNT  
 INSTALLATION/LAYOUT DRAWING

SIZE  
 A

DRAWING NUMBER

AOT-701-204

REV  
 B

SCALE= 1:1

SHEET 1 of 1

NOTICE: THE INFORMATION AND DESIGN IN THIS DOCUMENT IS THE PROPERTY OF LEA INTERNATIONAL. ALL RIGHTS RESERVED.