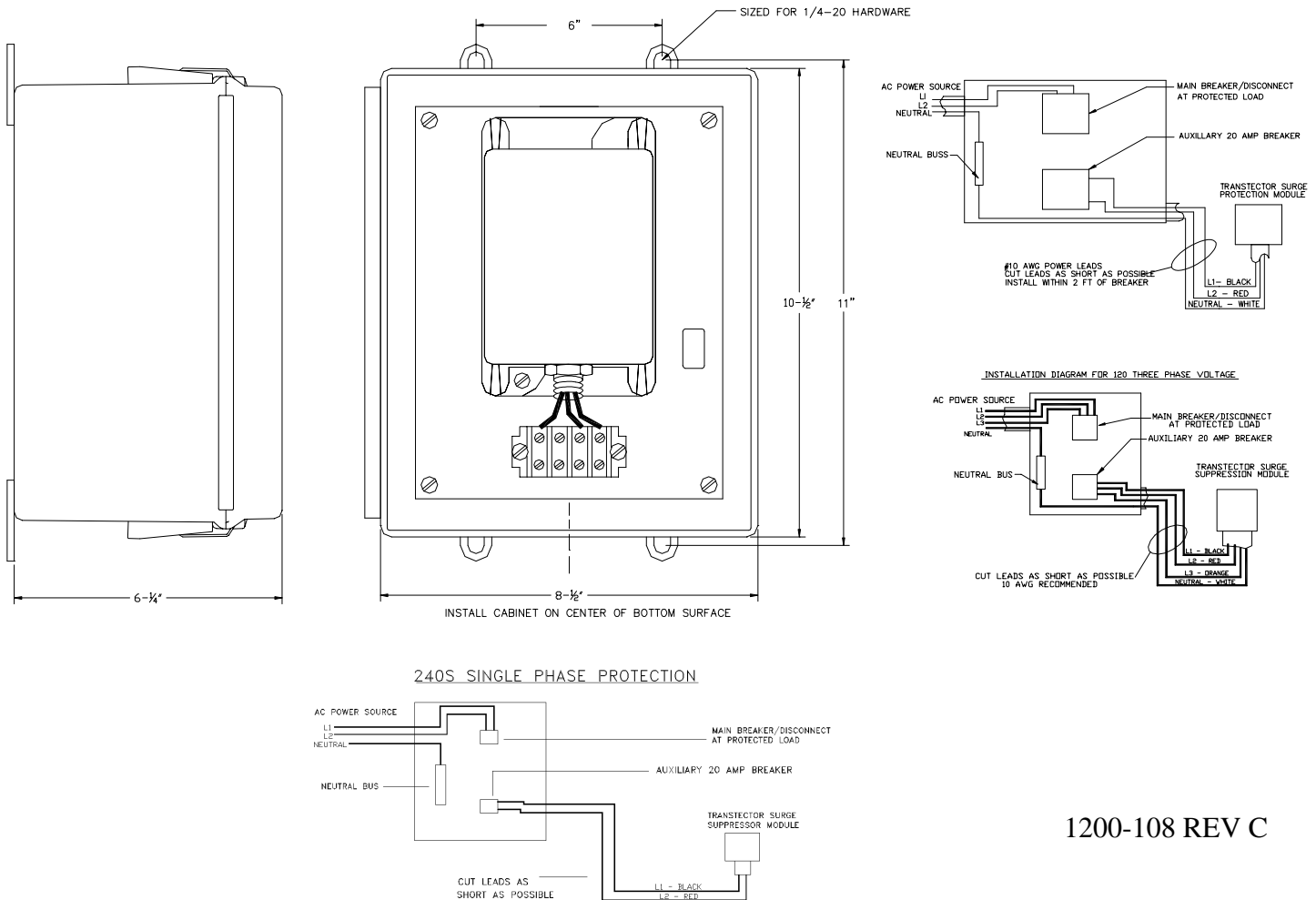




Designed to protect 120/240V, single phase (three wire plus ground), 120W (4 wire plus ground) and 240S services, the MCP Outdoor Surge Suppressor is to be installed and wired as close as possible to your main electrical service panel in order to provide the most effective transient voltage surge suppression. Housed in a watertight enclosure, the MCP Outdoor Surge Suppressor can be mounted indoors or outdoors. The installation and wiring of this product should only be performed by qualified personnel. Be sure to follow all local and national electrical codes to guarantee safety.

Warning! All electrical power must be off during installation for safety.

Refer to the illustration below for proper mounting details and electrical wiring. Note that the MCP Outdoor Surge Suppressor should be installed within two feet of the main electrical service panel and the wires should be cut as short as possible (shorter is better). The illustration shows that the optimum conduit placement for wiring will be on the center of the bottom of the MCP Outdoor Surge Suppressor. Use 1/4-20 hardware to mount the MCP Outdoor Surge Suppressor to the wall on the mounting pattern shown (11" high X 6" wide). The MCP Outdoor Surge Suppressor is wired in parallel and should always be installed off of a designated 20 amp breaker.



1200-108 REV C