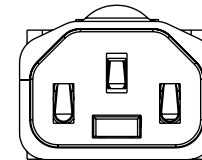
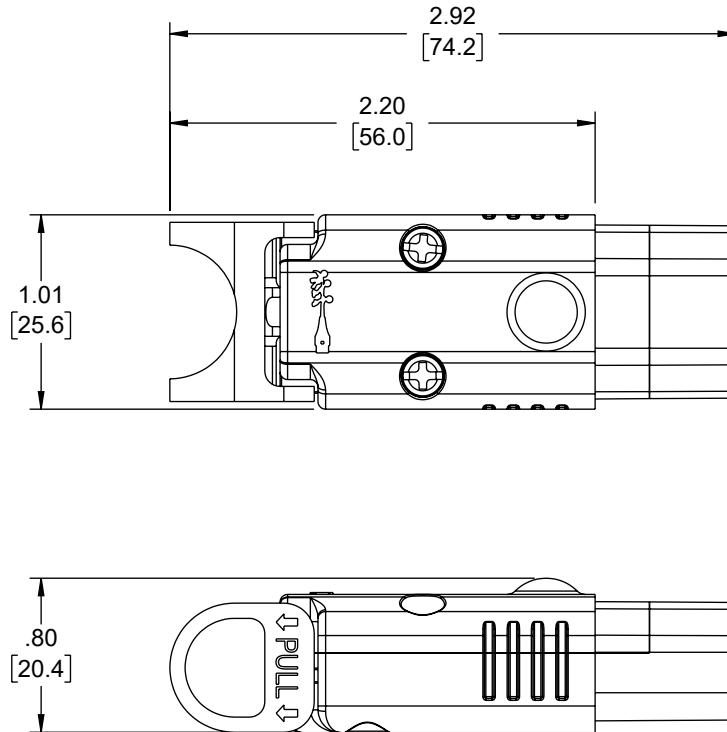



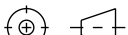
THE INFORMATION CONTAINED IN THIS DRAWING IS THE SOLE
PROPERTY OF TRANSTECTOR, INC.. ANY REPRODUCTION IN PART OR WHOLE
WITHOUT THE WRITTEN PERMISSION OF TRANSTECTOR, INC. IS PROHIBITED.

REVISION					
ZONE	REV	DESCRIPTION	DATE	CHANGED BY	APPROVED
	A	INITIAL RELEASE	07/06/2023	HBAKKE	GUTTADAURO



NOTES:

1. RATING: 10A /250V FOR EUROPE, 15A /250V FOR USA
2. CABLE SIZE:
3C x 0.75 ~ 1.50mm² MAX
3C x 14~18 AWG
3. CERTIFICATION:
KEMA/ENEC FOR EUROPE
SAA FOR AUSTRALIA
4. CONNECTOR SHALL BE INDIVIDUALLY PACKAGED IN
ACCORDANCE WITH SPEC PS-0031.
5. ALL DIMENSIONS FOR REFERENCE ONLY.

UNLESS OTHERWISE SPECIFIED, DIMENSIONS ARE IN INCHES [mm]		APPROVALS		DATE		 TRANSTECTOR an INFINITI® brand		10701 Airport Road, Hayden, ID 83835 Phone: 1.208.635.6400 Fax: 1.208.955.2041	
OVERALL CABLE LENGTH TOLERANCE: ≤12 [305] = +1 [25] / -0 >12 [305] ≤60 [1524] = +2 [51] / -0 >60 [1524] ≤120 [3048] = +4 [102] / -0 >120 [3048] ≤300 [7620] = +6 [152] / -0 >300 [7620] = +5% / -0		DRAWN BY HBAKKE		07/06/2023		CATEGORY		POWER PRODUCTS	
ALL OTHER DIMENSIONAL TOLERANCES: .X = ± .2 [5] FRACTIONS ± 1/32 .XX = ± .02 [.5] ANGLES ± 1° .XXX = ± .005 [.13]		CHECKED BY DMAY		07/06/2023					
		APPROVED BY DGUST		07/06/2023		PRODUCT DESCRIPTION C13 LOCKING CONNECTOR, STRAIGHT			
THIRD-ANGLE PROJECTION 		COLOR VARIATIONS MAY OCCUR		SIZE A	CAGE CODE 30992	ITEM NO. TTAPC-C13L	REV. A		
				SCALE: NONE		CAD FILE: TTAPC-C13L.SLDDRW		SHEET 1 OF 1	