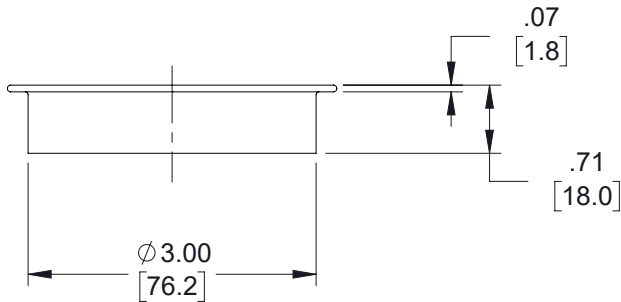
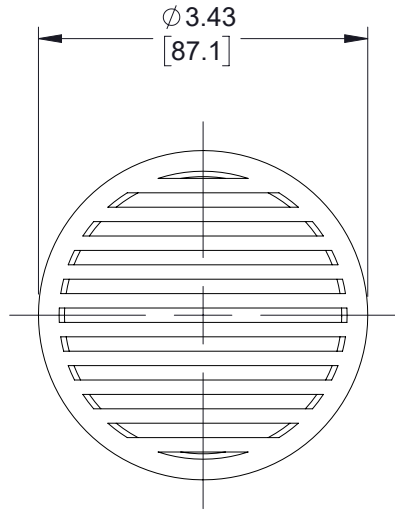


THE INFORMATION CONTAINED IN THIS DRAWING IS THE SOLE PROPERTY OF TRANSTECTOR, INC.. ANY REPRODUCTION IN PART OR WHOLE WITHOUT THE WRITTEN PERMISSION OF TRANSTECTOR, INC. IS PROHIBITED.

REVISIONS			
REV	DESCRIPTION	DATE	APPROVED
A	INITIAL RELEASE	11/06/2019	MMARTINEZ



UNLESS OTHERWISE SPECIFIED,
DIMENSIONS ARE IN INCHES [mm]

OVERALL CABLE LENGTH TOLERANCE:
 ≤12 [305] = +1 [25] / -0
 >12 [305] ≤60 [1524] = +2 [51] / -0
 >60 [1524] ≤120 [3048] = +4 [102] / -0
 >120 [3048] ≤300 [7620] = +6 [152] / -0
 >300 [7620] = +5% / -0

ALL OTHER DIMENSIONAL TOLERANCES:
 .X = ± .2 [5] FRACTIONS ± 1/32
 .XX = ± .02 [.5] ANGLES ± 1°
 .XXX = ± .005 [.13]

THIRD-ANGLE PROJECTION

APPROVALS	DATE
DRAWN BY DZINN	11/06/2019
CHECKED BY DFRISIELLO	11/06/2019
APPROVED BY MMARTINEZ	11/06/2019

 an INFINIT@ brand	10701 Airport Road, Hayden, ID 83835 Phone: 1.208.635.6400 Fax: 1.208.955.2041	
	CATEGORY ENCLOSURE	
PRODUCT DESCRIPTION Aluminum Vent - Louvered Aluminum Vent		
SIZE A	CAGE CODE 30992	DWG. NO. TEPC-V4
SCALE: NONE		CAD FILE: TEPC-V4.SLDDRW
SHEET 1 OF 1		REV. A