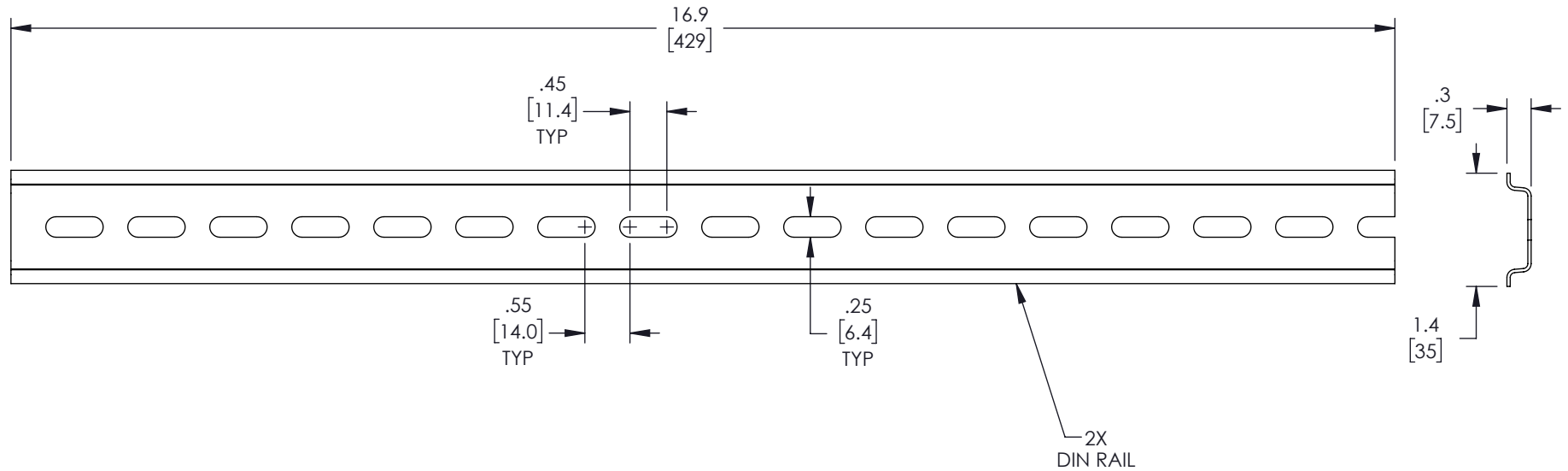



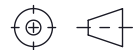
THE INFORMATION CONTAINED IN THIS DRAWING IS THE SOLE  
PROPERTY OF TRANSECTOR, INC.. ANY REPRODUCTION IN PART OR WHOLE  
WITHOUT THE WRITTEN PERMISSION OF TRANSECTOR, INC. IS PROHIBITED.

REVISIONS			
REV	DESCRIPTION	DATE	APPROVED
A	INITIAL RELEASE	04/19/2022	WDIBELLA



#### NOTES:

1. ALL HARDWARE INCLUDED

UNLESS OTHERWISE SPECIFIED, DIMENSIONS ARE IN INCHES [mm]		APPROVALS		DATE	 <b>TRANSECTOR</b> an INFINITO brand	10701 Airport Road, Hayden, ID 83835 Phone: 1.208.635.6400 Fax: 1.208.955.2041	
OVERALL CABLE LENGTH TOLERANCE: ≤12 [305] = +1 [25] / -0 >12 [305] ≤60 [1524] = +2 [51] / -0 >60 [1524] ≤120 [3048] = +4 [102] / -0 >120 [3048] ≤300 [7620] = +6 [152] / -0 >300 [7620] = +5% / -0		DRAWN BY BPUCHASKI		04/19/2022		CATEGORY  ENCLOSURES	
ALL OTHER DIMENSIONAL TOLERANCES: .X = ± .2 [5]   FRACTIONS ± 1/32 .XX = ± .02 [5]   ANGLES ± 1° .XXX = ± .005 [13]		CHECKED BY DFRISIELLO		04/19/2022			
THIRD-ANGLE PROJECTION 		APPROVED BY WDIBELLA		04/19/2022			
CONFIGURATION DETAILS OF UNDIMENSIONED FEATURES MAY VARY		PRODUCT DESCRIPTION  DIN RAIL KIT PC201608 ENCLOSURES (2 RAILS, 4 SCREWS)					
SIZE <b>A</b>		CAGE CODE <b>30992</b>		ITEM NO. TEPC-20-DIN35K		REV. A	
SCALE: NONE		CAD FILE: TEPC-20-DIN35K.SLDDRW				SHEET 1 OF 1	