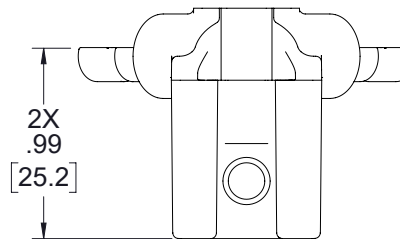
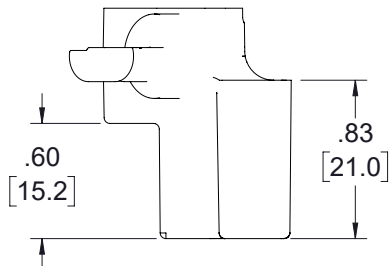
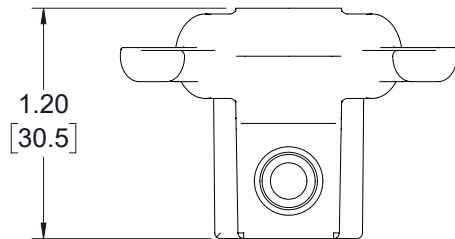
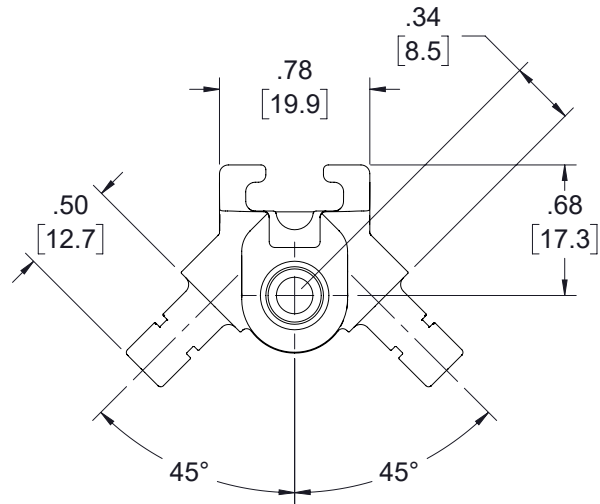


THE INFORMATION CONTAINED IN THIS DRAWING IS THE SOLE
PROPERTY OF TRANSECTOR, INC.. ANY REPRODUCTION IN PART OR WHOLE
WITHOUT THE WRITTEN PERMISSION OF TRANSECTOR, INC. IS PROHIBITED.



BACK PANEL KIT CONSISTS OF
(4) BLACK BRACKETS
& ASSOCIATED HARDWARE.

BRACKET MATERIAL:
POLYCARBONATE (BLACK)

ALL DIMENSIONS FOR REFERENCE ONLY

UNLESS OTHERWISE SPECIFIED, DIMENSIONS ARE IN INCHES [mm] OVERALL CABLE LENGTH TOLERANCE: ≤12 [305] = +1 [25] / -0 >12 [305] ≤60 [1524] = +2 [51] / -0 >60 [1524] ≤120 [3048] = +4 [102] / -0 >120 [3048] ≤300 [7620] = +6 [152] / -0 >300 [7620] = +5% / -0 ALL OTHER DIMENSIONAL TOLERANCES: .X = ± .2 [5] FRACTIONS ± 1/32 .XX = ± .02 [.5] ANGLES ± 1° .XXX = ± .005 [.13] THIRD-ANGLE PROJECTION 	APPROVALS		DATE	 an INFINITI brand 10701 Airport Road, Hayden, ID 83835 Phone: 1.208.635.6400 Fax: 1.208.955.2041
	DRAWN BY DZINN		05/31/2020	
	CHECKED BY DFRISIELLO		05/31/2020	
	APPROVED BY MMARTINEZ		05/31/2020	
CONFIGURATION DETAILS OF UNDIMENSIONED FEATURES MAY VARY				CATEGORY ENCLOSURE
COLOR VARIATIONS MAY OCCUR				PRODUCT DESCRIPTION Panel Adjustment Kit-Black
SIZE A		CAGE CODE 30992	DWG. NO. TEBPC-BPKG	REV. A
SCALE: NONE		CAD FILE: TEBPC-BPKG.SLDRW		SHEET 1 OF 1

REVISIONS			
REV	DESCRIPTION	DATE	APPROVED
A	INITIAL RELEASE	05/31/2020	MMARTINEZ