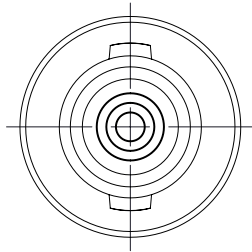
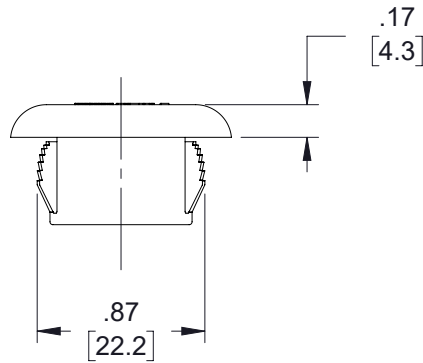
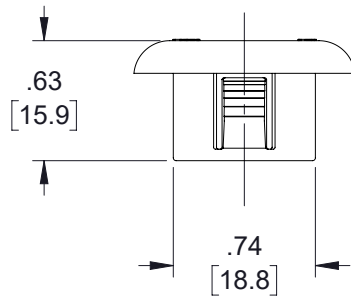
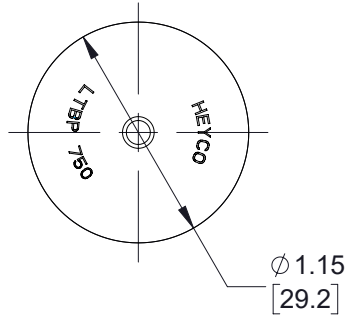

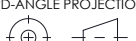


THE INFORMATION CONTAINED IN THIS DRAWING IS THE SOLE
PROPERTY OF TRANSECTOR, INC.. ANY REPRODUCTION IN PART OR WHOLE
WITHOUT THE WRITTEN PERMISSION OF TRANSECTOR, INC. IS PROHIBITED.

REVISIONS			
REV	DESCRIPTION	DATE	APPROVED
A	INITIAL RELEASE	11/05/2019	MMARTINEZ



UNLESS OTHERWISE SPECIFIED, DIMENSIONS ARE IN INCHES [mm]		APPROVALS		DATE		 TRANSECTOR an INFINITI® brand		10701 Airport Road, Hayden, ID 83835 Phone: 1.208.635.6400 Fax: 1.208.955.2041	
OVERALL CABLE LENGTH TOLERANCE: ≤12 [305] = +1 [25] / -0 >12 [305] ≤60 [1524] = +2 [51] / -0 >60 [1524] ≤120 [3048] = +4 [102] / -0 >120 [3048] ≤300 [7620] = +6 [152] / -0 >300 [7620] = +5% / -0		DRAWN BY DZINN		11/05/2019		CATEGORY		ENCLOSURE	
		CHECKED BY DFRISIELLO		11/05/2019					
		APPROVED BY MMARTINEZ		11/05/2019					
ALL OTHER DIMENSIONAL TOLERANCES: .X = ± .2 [5] FRACTIONS ± 1/32 .XX = ± .02 [.5] ANGLES ± 1° .XXX = ± .005 [.13]		CONFIGURATION DETAILS OF UNDIMENSIONED FEATURES MAY VARY		PRODUCT DESCRIPTION Liquid Tight Hole Plug (.175-.400)					
THIRD-ANGLE PROJECTION 		COLOR VARIATIONS MAY OCCUR		SIZE A		CAGE CODE 30992		DWG. NO. TE-HPLG-075	
				SCALE: NONE		CAD FILE: TE-HPLG-075.SLDDRW		REV. A	
								SHEET 1 OF 1	