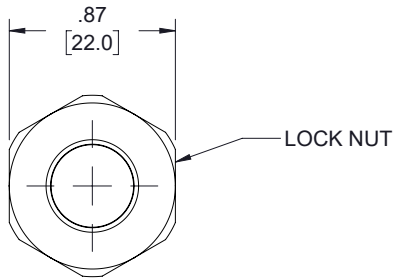
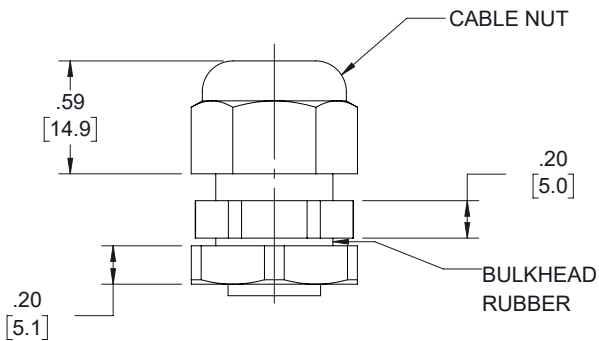
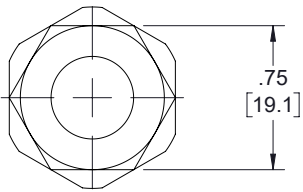
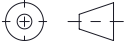



8 7 6 5 4 3 2 1

THE INFORMATION CONTAINED IN THIS DRAWING IS THE SOLE
PROPERTY OF TRANSECTOR, INC.. ANY REPRODUCTION IN PART OR WHOLE
WITHOUT THE WRITTEN PERMISSION OF TRANSECTOR, INC. IS PROHIBITED.

REVISIONS			
REV	DESCRIPTION	DATE	APPROVED
A	INITIAL RELEASE	10/31/2019	MMARTINEZ



<div>UNLESS OTHERWISE SPECIFIED, DIMENSIONS ARE IN INCHES [mm]</div> <div>OVERALL CABLE LENGTH TOLERANCE: ≤12 [305] = +1 [25] / -0 >12 [305] ≤60 [1524] = +2 [51] / -0 >60 [1524] ≤120 [3048] = +4 [102] / -0 >120 [3048] ≤300 [7620] = +6 [152] / -0 >300 [7620] = +5% / -0</div> <div>ALL OTHER DIMENSIONAL TOLERANCES: .X = ± .2 [5] FRACTIONS .XX = ± .02 [.5] ± 1/32 .XXX = ± .005 [.13] ANGLES ± 1°</div> <div>THIRD-ANGLE PROJECTION</div> <div></div>	APPROVALS	DATE	 <div>TRANSECTOR</div> <div>an INFINITI® brand</div>		<div>10701 Airport Road, Hayden, ID 83835 Phone: 1.208.635.6400 Fax: 1.208.955.2041</div>	
	DRAWN BY DZINN	10/31/2019				
	CHECKED BY DFRISIELLO	10/31/2019	CATEGORY ENCLOSURE			
	APPROVED BY MMARTINEZ	10/31/2019		PRODUCT DESCRIPTION PC HUB Cord Grip w/ Lock Nut (.157-.315)		
CONFIGURATION DETAILS OF UNDIMENSIONED FEATURES MAY VARY			SIZE A	CAGE CODE 30992	DWG. NO. TE-CG0.6	REV. A
COLOR VARIATIONS MAY OCCUR			SCALE: NONE	CAD FILE: TE-CG0.6.SLDDRW		SHEET 1 OF 1