

## AC Surge Protector SPD SP PLUS Brick 277/480 Vac Three-Phase Wye MOV 50 kA, TAA

### SP50RS-4803Y



#### SP50RS Series

##### Features

- UL1449 5th Ed. Type 1/Type 2
- High Capacity MOV Protection
- Suppression Status LEDs
- Remote Suppression Status Contacts
- Wall Mount, Conduit Hub or Bracket Mount
- No External Backup Fuses Required

##### Applications

- Electrical Panelboards
- Industrial Automation
- Communications Base Stations
- IT & Data Centers
- Switchgear
- Motor Control Centers
- Automatic Transfer Switches
- Wastewater Treatment
- Oil & Gas
- LED Lighting
- Schools
- Hospitals

##### Description

AC surge protector (also known as SPD or lightning protector) SP50RS-4803Y from Transector is a UL1449 5th Ed. Type 1/Type 2 brick style SPD that utilizes state of the art MOV technology to protect critical equipment that operates on a 277/480 Vac 3-Phase Wye electrical service. This surge protector provides effective protection against electrical transient surges that are generated both by external lightning events and by internal switching events and supports long-term system reliability by safely shunting high amounts of transient energy while maintaining a very low clamping voltage. Transector AC surge protectors are available in stock with same day shipping.

#### Electrical Specifications

Description	Minimum	Typical	Maximum	Units
Service Voltages		277/480		Vac
Service Type		3-Phase Wye		
Frequency	50		60	Hz
Maximum Continuous Operating Voltage (MCOV) L - L			640	Vac
Maximum Continuous Operating Voltage (MCOV) L - N			320	Vac
Maximum Continuous Operating Voltage (MCOV) L - G			470	Vac
Remote Status Indicators		Form C Contacts		

#### Surge Protection Specification

Description	Minimum	Typical	Maximum	Units
Surge Protection Technology		MOV		
Protection Modes		L-N, L-L, L-G		
8/20μs Surge Current			50	kA
Nominal Discharge Current Rating (In)		10		kA

## AC Surge Protector SPD SP PLUS Brick 277/480 Vac Three-Phase Wye MOV 50 kA, TAA

### SP50RS-4803Y



#### Surge Protection Specification

Description	Minimum	Typical	Maximum	Units
VPR 8/20μs L - L			2,000	Vpk
VPR 8/20μs L - N			1,200	Vpk
VPR 8/20μs L - G			1,800	Vpk
Response Time			25	ns
SCCR (Short Circuit Current Rating)		200		kAIC

#### Mechanical Specifications

##### Size

Height	3.35 in	[85.09 mm].
Width	3.35 in	[85.09 mm]
Depth	3.25 in	[82.55 mm]
Weight	1 lbs	[453.59 g]
Housing Material and Plating	Polycarbonate	

#### Environmental Specifications

Temperature Range (Operational)	-40 to +85 deg C
Environmental Protection Rating	NEMA 4X
Humidity	95% non-condensing

#### Installation

Mount Type	3/4"-14 Hub or Bracket Mount
Service Wiring Terminal	3 foot long to #10 AWG
Status Indication Terminal	3 foot long to #18 AWG

#### Compliance Certifications

UL Compliant	Yes
Certifications	UL 1449 5th Ed. Type 1 and Type 2
	UL 96A
	cUL
	NOM

## AC Surge Protector SPD SP PLUS Brick 277/480 Vac Three-Phase Wye MOV 50 kA, TAA



### SP50RS-4803Y

Transtector Systems specializes in protection of highly sensitive, low voltage equipment through its patented, non-degrading silicon diode technology and custom filters. Our power quality expertise translates into a diverse product offering including AC, DC, and signal applications as well as integrated cabinets, power distribution panels and EMP hardened devices.

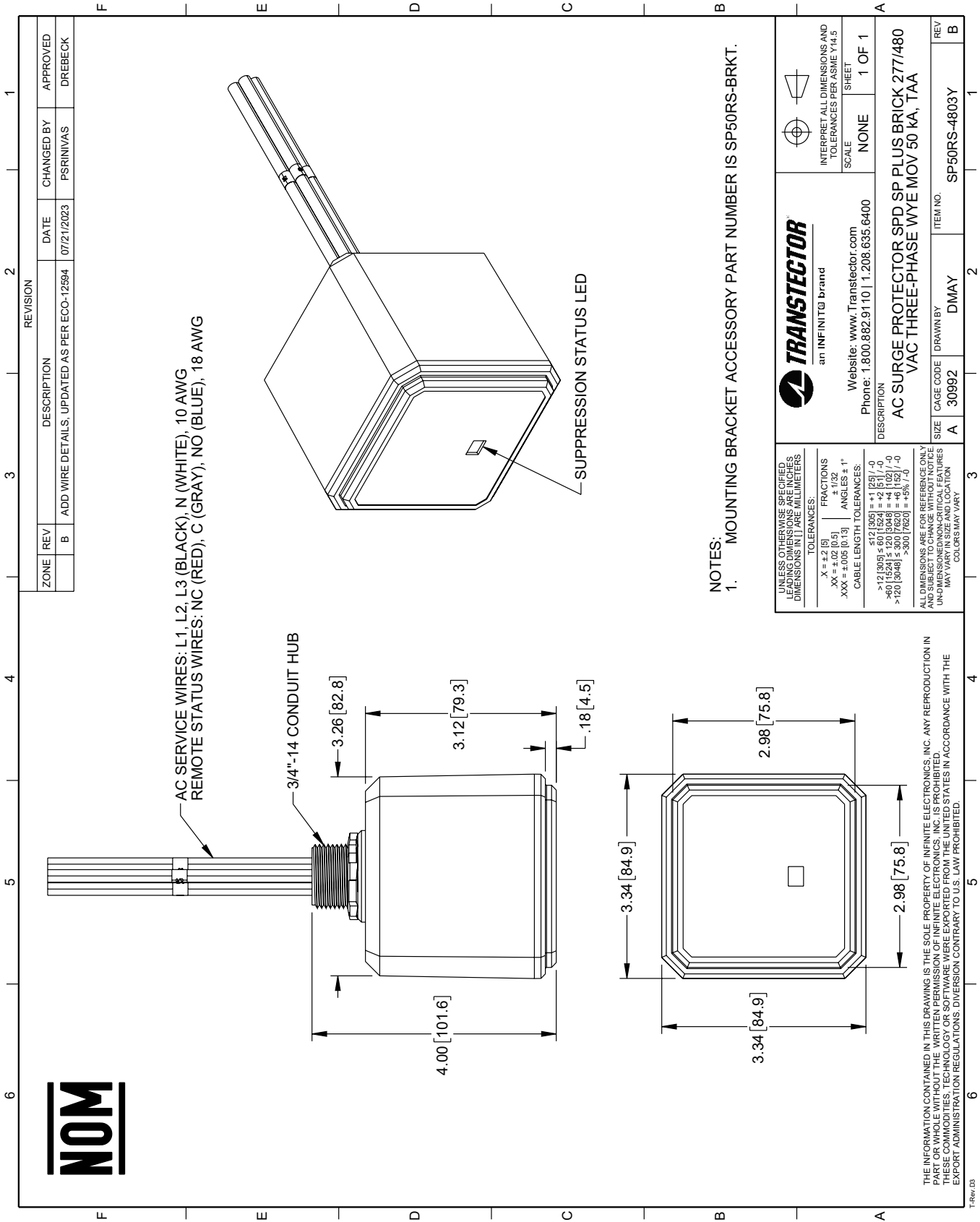
Click the following link (or enter part number in "SEARCH" on website) to obtain additional part information including price, inventory and certifications: [AC Surge Protector SPD SP PLUS Brick 277/480 Vac Three-Phase Wye MOV 50 kA, TAA SP50RS-4803Y](https://www.transtector.com/ac-surge-protector-spd-sp-plus-brick-sp50rs-4803y-p.aspx)

URL: <https://www.transtector.com/ac-surge-protector-spd-sp-plus-brick-sp50rs-4803y-p.aspx>

The information contained within this document is accurate to the best of our knowledge and representative of the part described herein. It may be necessary to make modifications to the part and/or the documentation of the part in order to implement improvements. Transtector reserves the right to make such changes as required. Unless otherwise stated, all specifications are nominal. Transtector does not make any representation or warranty regarding the suitability of the part described herein for any particular purpose, and Transtector does not assume liability arising out of the use of any part or document.

SP50RS-4803Y CAD Drawing

AC Surge Protector SPD SP PLUS Brick 277/480 Vac Three-Phase Wye MOV 50 kA, TAA



NOTES:

1. MOUNTING BRACKET ACCESSORY PART NUMBER IS SP50RS-BRKT.

**TRANSTECTOR**  
an INFINITE<sup>®</sup> brand

Website: [www.Transtector.com](http://www.Transtector.com)  
Phone: 1.800.882.9110 | 1.208.635.6400

  
INTERPRET ALL DIMENSIONS AND TOLERANCES PER ASME Y14.5

SCALE: NONE  
SHEET: 1 OF 1

DESCRIPTION  
**AC SURGE PROTECTOR SPD SP PLUS BRICK 277/480 VAC THREE-PHASE WYE MOV 50 kA, TAA**

SIZE	CAGE CODE	DRAWN BY	ITEM NO.
A	30992	DMAY	SP50RS-4803Y

REV	B
REV	B

THE INFORMATION CONTAINED IN THIS DRAWING IS THE SOLE PROPERTY OF INFINITE ELECTRONICS, INC. ANY REPRODUCTION IN PART OR WHOLE WITHOUT THE WRITTEN PERMISSION OF INFINITE ELECTRONICS, INC. IS PROHIBITED. THESE COMMODITIES, TECHNOLOGY OR SOFTWARE WERE EXPORTED FROM THE UNITED STATES IN ACCORDANCE WITH THE EXPORT ADMINISTRATION REGULATIONS. DIVERSION CONTRARY TO U.S. LAW PROHIBITED.