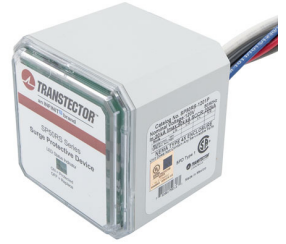


AC Surge Protector SPD SP PLUS Brick 120 Vac Single-Phase MOV 50 kA, TAA

SP50RS-1201P



SP50RS Series

Features

- FDOT APL 620-002-016
- NEMA TS2 Tested and Compliant
- UL1449 5th Ed. Type 1/Type 2
- High Capacity MOV Protection
- Suppression Status LEDs
- Remote Suppression Status Contacts
- Wall Mount, Conduit Hub or Bracket Mount
- No External Backup Fuses Required

Applications

- Traffic Control Systems
- Electrical Panelboards
- Industrial Automation
- Communications Base Stations
- IT & Data Centers
- Switchgear
- Motor Control Centers
- Automatic Transfer Switches
- Wastewater Treatment
- Oil & Gas
- LED Lighting
- Schools and Hospitals

Description

AC surge protector (also known as SPD or lightning protector) SP50RS-1201P from Transtector is a UL1449 5th Ed. Type 1/Type 2 brick style SPD that utilizes state of the art MOV technology to protect critical equipment that operates on a 120 Vac Single-Phase electrical service. This surge protector provides effective protection against electrical transient surges that are generated both by external lightning events and by internal switching events and supports long-term system reliability by safely shunting high amounts of transient energy while maintaining a very low clamping voltage. Transtector AC surge protectors are available in stock with same day shipping.

Electrical Specifications

Description	Minimum	Typical	Maximum	Units
Service Voltages		120		Vac
Service Type		Single-Phase		
Frequency	50		60	Hz
Maximum Continuous Operating Voltage (MCOV) L - N			150	Vac
Maximum Continuous Operating Voltage (MCOV) L - G			300	Vac
Remote Status Indicators		Form C Contacts		

Surge Protection Specification

Description	Minimum	Typical	Maximum	Units
Surge Protection Technology		MOV		
Protection Modes		L-N, L-G		
8/20μs Surge Current			50	kA
Nominal Discharge Current Rating (In)		20		kA

AC Surge Protector SPD SP PLUS Brick 120 Vac Single-Phase MOV 50 kA, TAA

SP50RS-1201P



Surge Protection Specification

Description	Minimum	Typical	Maximum	Units
VPR 8/20µs L - N			700	Vpk
VPR 8/20µs L - G			1,200	Vpk
Response Time			25	ns
SCCR (Short Circuit Current Rating)		200		kAIC

Mechanical Specifications

Size		
Height	3.35 in	[85.09 mm]
Width	3.35 in	[85.09 mm]
Depth	3.25 in	[82.55 mm]
Weight	1 lbs	[453.59 g]
Housing Material and Plating	Polycarbonate	

Environmental Specifications

Temperature Range (Operational)	-40 to +85 deg C
Temperature Range (Storage)	-40 to +85 deg C
Environmental Protection Rating	NEMA 4X
Humidity	95% non-condensing

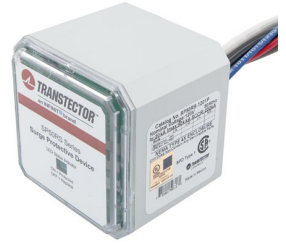
Installation

Mount Type	3/4"-14 Hub or Bracket Mount
Service Wiring Terminal	3 foot long to #10 AWG
Status Indication Terminal	3 foot long to #18 AWG

Compliance Certifications

UL Compliant	Yes
Certifications	UL 1449 5th Ed. Type 1 and Type 2
	UL 96A
	cUL
	NOM
	NEMA TS2
	FDOT APL

AC Surge Protector SPD SP PLUS Brick 120 Vac Single-Phase MOV 50 kA, TAA



SP50RS-1201P

Transtector Systems specializes in protection of highly sensitive, low voltage equipment through its patented, non-degrading silicon diode technology and custom filters. Our power quality expertise translates into a diverse product offering including AC, DC, and signal applications as well as integrated cabinets, power distribution panels and EMP hardened devices.

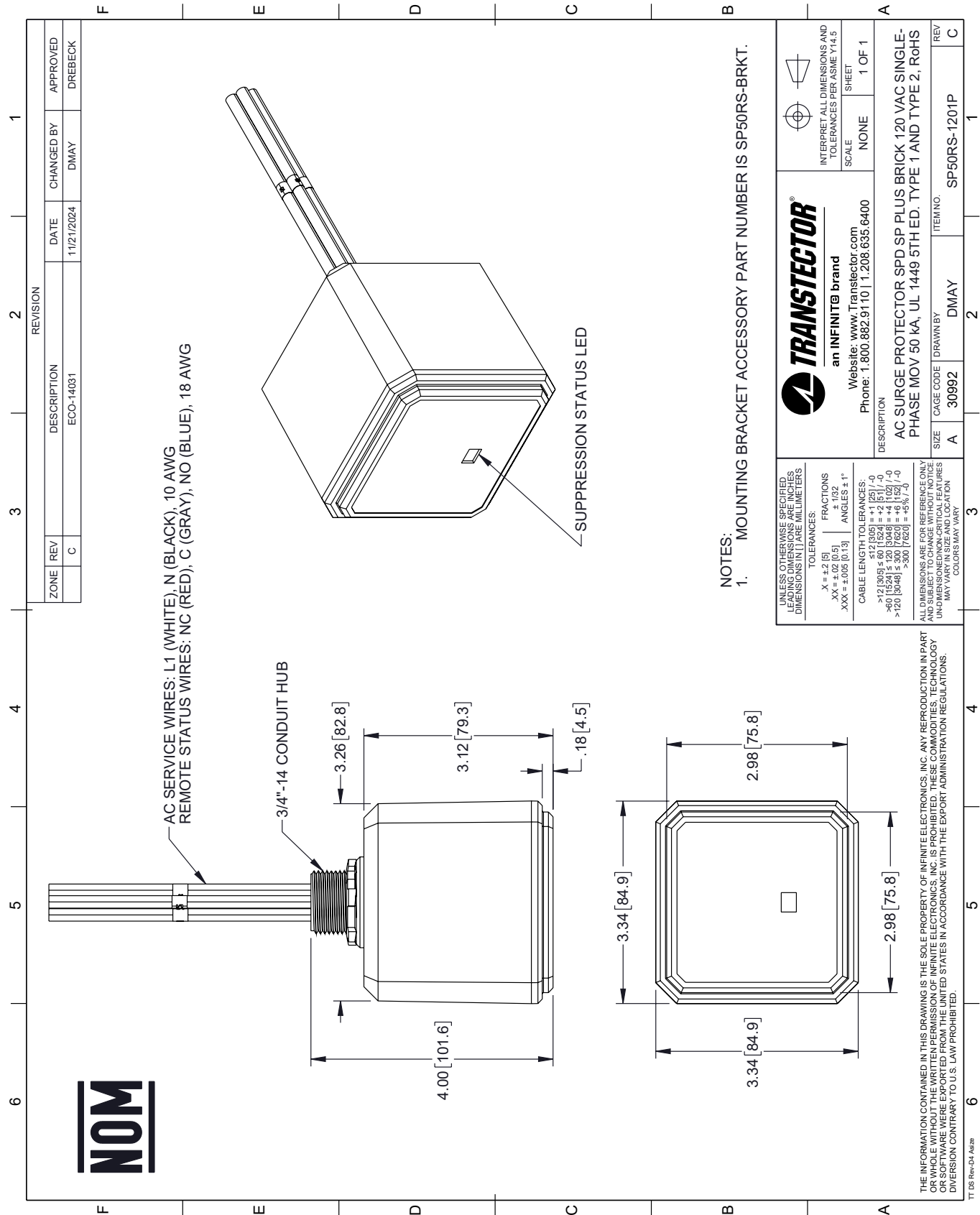
Click the following link (or enter part number in "SEARCH" on website) to obtain additional part information including price, inventory and certifications: [AC Surge Protector SPD SP PLUS Brick 120 Vac Single-Phase MOV 50 kA, TAA SP50RS-1201P](https://www.transtector.com/ac-surge-protector-spd-sp-plus-brick-sp50rs-1201p-p.aspx)

URL: <https://www.transtector.com/ac-surge-protector-spd-sp-plus-brick-sp50rs-1201p-p.aspx>


The information contained within this document is accurate to the best of our knowledge and representative of the part described herein. It may be necessary to make modifications to the part and/or the documentation of the part in order to implement improvements. Transtector reserves the right to make such changes as required. Unless otherwise stated, all specifications are nominal. Transtector does not make any representation or warranty regarding the suitability of the part described herein for any particular purpose, and Transtector does not assume liability arising out of the use of any part or document.

SP50RS-1201P CAD Drawing

AC Surge Protector SPD SP PLUS Brick 120 Vac Single-Phase MOV 50 kA, TAA



NOTES:
1. MOUNTING BRACKET ACCESSORY PART NUMBER IS SP50RS-BRKT.

UNLESS OTHERWISE SPECIFIED, LEADING DIMENSIONS ARE IN INCHES. DIMENSIONS IN [] ARE MILLIMETERS.		<div></div> <div>TRANSTECTOR[®]</div> <div>an INFINITE brand</div> <div>Website: www.Transector.com</div> <div>Phone: 1.800.882.9110 1.208.635.6400</div>		<div></div> <div>INTERPRET ALL DIMENSIONS AND TOLERANCES PER ASME Y14.5</div>	
TOLERANCES: X = ±.2 [5] XX = ±.02 [0.5] XXX = ±.005 [0.13]		FRACTIONS ± 1/32 ANGLES ± 1°		SCALE NONE	
CABLE LENGTH TOLERANCES: >12 [305] ≤ 60 [1524] = ±.125 [-0] >60 [1524] ≤ 120 [3048] = ±.125 [-0] >120 [3048] ≤ 300 [7620] = ±.125 [-0] >300 [7620] = ±.125 [-0]		DESCRIPTION AC SURGE PROTECTOR SPD SP PLUS BRICK 120 VAC SINGLE-PHASE MOV 50 kA, UL 1449 5TH ED. TYPE 1 AND TYPE 2, RoHS		SHEET 1 OF 1	
ALL DIMENSIONS ARE FOR REFERENCE ONLY AND SUBJECT TO CHANGE WITHOUT NOTICE. DIMENSIONS MAY VARY IN SIZE AND LOCATION. UNLESS OTHERWISE SPECIFIED, LEADING DIMENSIONS ARE IN INCHES. DIMENSIONS IN [] ARE MILLIMETERS. COLORS MAY VARY.					
SIZE A		CAGE CODE 30992		ITEM NO. SP50RS-1201P	
		DRAWN BY DMAY		REV C	