

AC Surge Protector SPD SP PLUS Brick 120, 240 Vac Split-Phase
 MOV 50 kA, UL 1449 4th Ed. Type 1 and Type 2, CE, RoHS



SP50-240SP LEA SP PLUS 50

Features

- UL1449 4th Ed. Type 1/Type 2
- High Capacity MOV Protection
- Suppression Status LEDs
- Wall Mount
- No External Backup Fuses Required

Applications

- Electrical Panelboards
- Industrial Automation
- Communications Base Stations
- IT & Data Centers
- Switchgear
- Motor Control Centers
- Automatic Transfer Switches
- Wastewater Treatment
- Oil & Gas
- LED Lighting
- Schools
- Hospitals

Description

AC surge protector (also known as SPD or lightning protector) SP50-240SP from Transtector is a UL1449 4th Ed. Type 1/Type 2 brick style SPD that utilizes state of the art MOV technology to protect critical equipment that operates on a 120/240 Vac split-phase electrical service. This surge protector provides effective protection against electrical transient surges that are generated both by external lightning events and by internal switching events and supports long-term system reliability by safely shunting high amounts of transient energy while maintaining a very low clamping voltage. Transtector AC surge protectors are available in stock with same day shipping.

Electrical Specifications

Description	Minimum	Typical	Maximum	Units
Service Voltages		120/240		Vac
Service Type		Split-Phase		
Maximum Continuous Operating Voltage (MCOV)				
L - L			360	Vac
L - N			180	Vac

Surge Protection Specification

Description	Minimum	Typical	Maximum	Units
Surge Protection Technology		MOV		
Protection Modes		L-N, L-L		
8/20 μ s Surge Current			50	kA

Click the following link (or enter part number in "SEARCH" on website) to obtain additional part information including price, inventory and certifications:
[AC Surge Protector SPD SP PLUS Brick 120, 240 Vac Split-Phase MOV 50 kA, UL 1449 4th Ed. Type 1 and Type 2, CE, RoHS SP50-240SP](#)

AC Surge Protector SPD SP PLUS Brick 120, 240 Vac Split-Phase
 MOV 50 kA, UL 1449 4th Ed. Type 1 and Type 2, CE, RoHS



SP50-240SP LEA SP PLUS 50

Nominal Discharge Current Rating (In)	20		kA
VPR 8/20 μ s			
L - L		1,200	Vpk
L - N		700	Vpk
Response Time		25	ns
SCCR (Short Circuit Current Rating)	200		kAIC

Mechanical Specifications

Size

Height	2.45 in	[62.23 mm]
Width	4.45 in	[113.03 mm]
Depth	5.71 in	[145.03 mm]
Weight	1.3 lbs	[589.67 g]
Housing Material and Plating	Plastic Enclosure	

Environmental Specifications

Temperature Range (Operational)	-40 to +85 deg C
Environmental Protection Rating	NEMA 4X
Humidity	90% non-condensing

Installation

Mount Type	Panel
------------	-------

Compliance Certifications

RoHS Compliant	Yes
CE Compliant	Yes
UL Compliant	Yes
Certifications	UL 1449 4th Ed. Type 1 and Type 2

Click the following link (or enter part number in "SEARCH" on website) to obtain additional part information including price, inventory and certifications:
[AC Surge Protector SPD SP PLUS Brick 120, 240 Vac Split-Phase MOV 50 kA, UL 1449 4th Ed. Type 1 and Type 2, CE, RoHS SP50-240SP](#)

AC Surge Protector SPD SP PLUS Brick 120, 240 Vac Split-Phase
MOV 50 kA, UL 1449 4th Ed. Type 1 and Type 2, CE, RoHS

SP50-240SP
LEA SP PLUS 50



Transtector Systems specializes in protection of highly sensitive, low voltage equipment through its patented, non-degrading silicon diode technology and custom filters. Our power quality expertise translates into a diverse product offering including AC, DC, and signal applications as well as integrated cabinets, power distribution panels and EMP hardened devices.

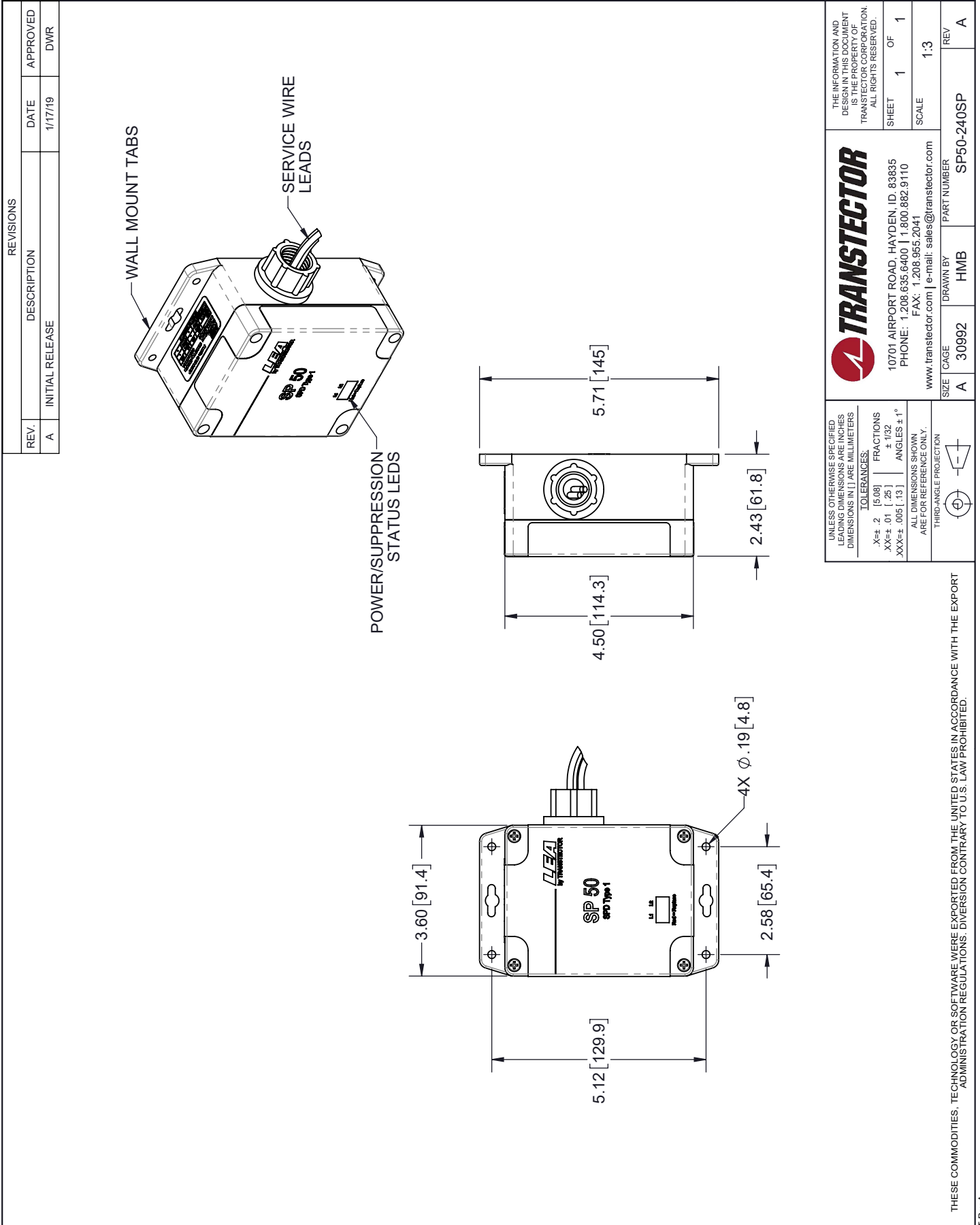
Click the following link (or enter part number in "SEARCH" on website) to obtain additional part information including price, inventory and certifications: [AC Surge Protector SPD SP PLUS Brick 120, 240 Vac Split-Phase MOV 50 kA, UL 1449 4th Ed. Type 1 and Type 2, CE, RoHS SP50-240SP](#)

URL: <https://www.transtector.com/ac-surge-protector-spd-sp-plus-brick-sp50-240sp-p.aspx>

The information contained in this document is accurate to the best of our knowledge and representative of the part described herein. It may be necessary to make modifications to the part and/or the documentation of the part, in order to implement improvements. Transtector reserves the right to make such changes as required. Unless otherwise stated, all specifications are nominal. Transtector does not make any representation or warranty regarding the suitability of the part described herein for any particular purpose, and Transtector does not assume any liability arising out of the use of any part or documentation.

AC Surge Protector SPD SP PLUS Brick 120, 240 Vac Split-Phase MOV
 50 kA, UL 1449 4th Ed. Type 1 and Type 2, CE, RoHS

SP50-240SP CAD Drawing



UNLESS OTHERWISE SPECIFIED LEADING DIMENSIONS ARE INCHES DIMENSIONS IN [] ARE MILLIMETERS

TOLERANCES:
 .X \pm .2 [5.08] FRACTIONS
 .XX \pm .01 [.25] \pm 1/32
 XXX \pm .005 [.13] ANGLES \pm 1°

ALL DIMENSIONS SHOWN ARE FOR REFERENCE ONLY.
 THIRD-ANGLE PROJECTION

TRANSTECTOR

10701 AIRPORT ROAD, HAYDEN, ID, 83835
 PHONE: 1.208.635.6400 | 1.800.882.9110
 FAX: 1.208.955.2041
 www.transvector.com | e-mail: sales@transvector.com

THE INFORMATION AND DESIGN IN THIS DOCUMENT IS THE PROPERTY OF TRANSTECTOR CORPORATION. ALL RIGHTS RESERVED.

SHEET 1 OF 1
 SCALE 1:3

SIZE	CAGE	DRAWN BY	PART NUMBER	REV
A	30992	HMB	SP50-240SP	A

THESE COMMODITIES, TECHNOLOGY OR SOFTWARE WERE EXPORTED FROM THE UNITED STATES IN ACCORDANCE WITH THE EXPORT ADMINISTRATION REGULATIONS. DIVERSION CONTRARY TO U.S. LAW PROHIBITED.

T-Rev A