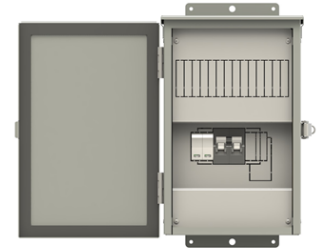


100A Main Breaker, No ST, MOV SPD,
No load or branch breakers

SC-2MMA9-8602-NMN00C



Features

- 120/240V 100A Main Breaker, 14 Position
- Suitable for Use as Service Equipment (SUSE)
- UL67 Listed with integrated surge protection
- No pre-populated load or branch breakers
- NEMA 3R Enclosure
- Versatile Wiring Access
- Padlock Hasp for Physical Security
- Wall or Pole Mount (SC-POLE-KIT sold separately)

Applications

- Small Cells
- Pico Cells
- Micro Cells
- 5G Nodes
- Right-of-Way Expansion
- DAS Systems

Description

Small cell/5G/DAS electrical power protection cabinet (also known as power distribution box) SC-2MMA9-8602-NMN00C from Transtector, is a UL67 Listed service entrance rated power distribution box that accepts a 120/240 Vac split-phase electrical service, and distributes power from a 100A shunt trip main breaker to individual loads via 14 field configurable 1 – 25A branch circuit breaker positions. Transtector electrical cabinets are available in stock with same day shipping.

Electrical Specifications

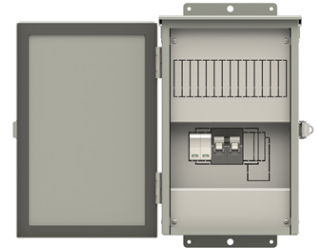
Description	Minimum	Typical	Maximum	Units
Service Voltage		240	120	Vac
Maximum Continuous Operating Voltage (MCOV)				
L - L			350	Vac
L - N			175	Vac
SCCR (Short Circuit Current Rating)			10	kAIC
Main Breaker Rating			100	A
Open Load Breaker Positions		14		

Surge Protection Specifications

Description	Minimum	Typical	Maximum	Units
Surge Protection Technology		MOV		
(SCCR) Short Circuit Current Rating			200	kAIC
Protection Modes		L-N, L-L		
8/20μs Surge Current		20	75	kA
VPR 8/20μs				
L - L			1,200	Vpk
L - N			600	Vpk

100A Main Breaker, No ST, MOV SPD,
No load or branch breakers

SC-2MMA9-8602-NMN00C



Mechanical Specifications

Size

Weight

18 lbs [8.16 kg]

Enclosure Material and Plating

Galvanized, Powder Coated Steel

Installation

Mount Type

Wall or Pole Mount

Service Wiring Terminals

Compression Lug

SPD Status Indication Terminals

3-Pin Connector

#22 AWG to #16 AWG

Environmental Specifications

Temperature (Operating Range)

-20 to +55 deg C

Temperature (Storage Range)

-40 to +65 deg C

NEMA Rating

3R

Humidity

95% non-condensing

Compliance Certifications

UL Listed

UL67 (Suitable for use as Service Equipment)

Transtector Systems specializes in protection of highly sensitive, low voltage equipment through its patented, non-degrading silicon diode technology and custom filters. Our power quality expertise translates into a diverse product offering including AC, DC, and signal applications as well as integrated cabinets, power distribution panels and EMP hardened devices.

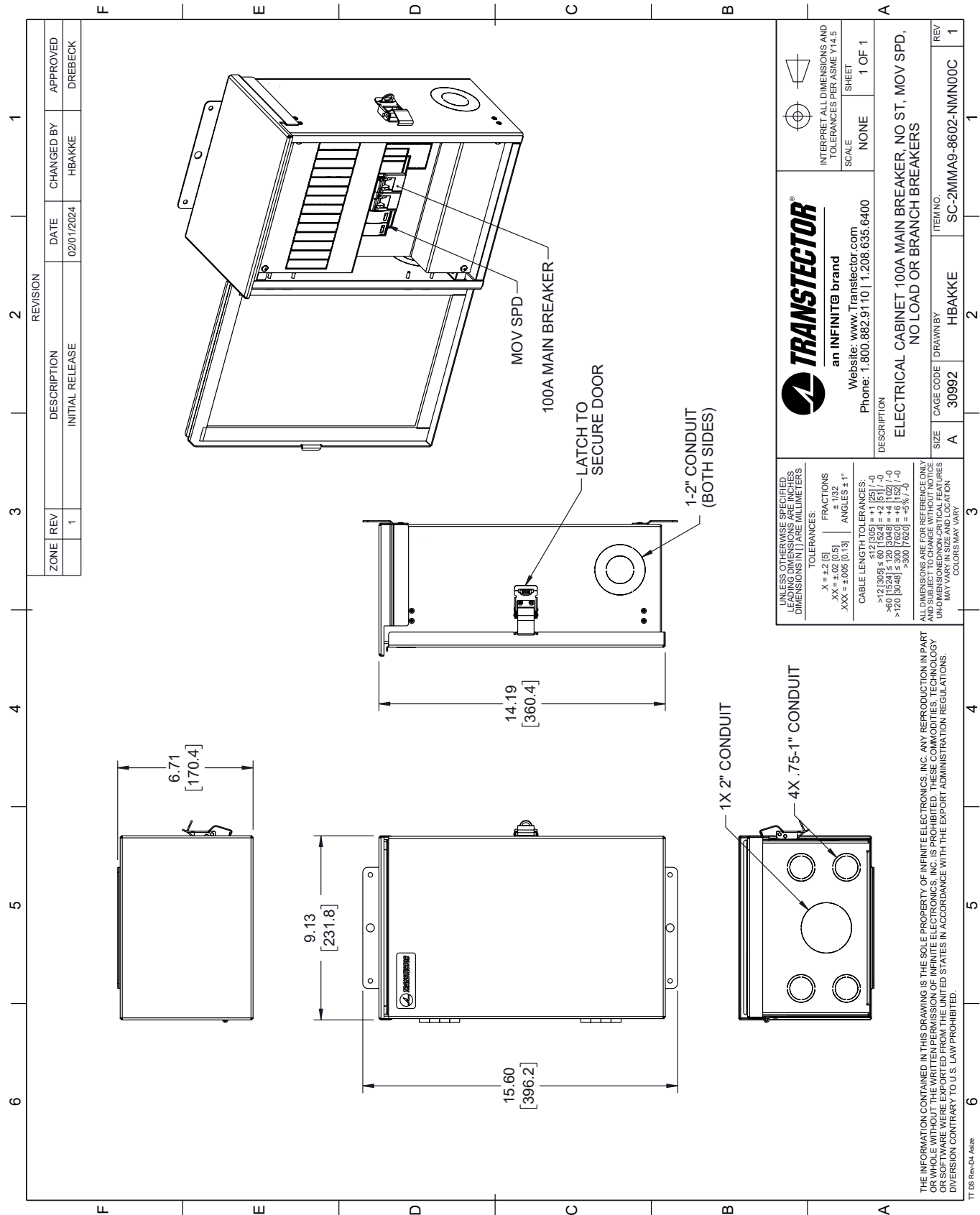
Click the following link (or enter part number in "SEARCH" on website) to obtain additional part information including price, inventory and certifications: [100A Main Breaker, No ST, MOV SPD, No load or branch breakers SC-2MMA9-8602-NMN00C](#)

URL: <https://www.transtector.com/electrical-cabinet-outdoor-split-phase-240-120-sc-2mma9-8602-nmn00c-p.aspx>

The information contained within this document is accurate to the best of our knowledge and representative of the part described herein. It may be necessary to make modifications to the part and/or the documentation of the part in order to implement improvements. Transtector reserves the right to make such changes as required. Unless otherwise stated, all specifications are nominal. Transtector does not make any representation or warranty regarding the suitability of the part described herein for any particular purpose, and Transtector does not assume liability arising out of the use of any part or document.

SC-2MMA9-8602-NMN00C CAD Drawing

100A Main Breaker, No ST, MOV SPD, No load or branch breakers



REVISION		DATE	CHANGED BY	APPROVED
ZONE	REV			
	1	02/01/2024	HBAKKE	DREBECK

<div>UNLESS OTHERWISE SPECIFIED, LEADING DIMENSIONS ARE IN INCHES. DIMENSIONS IN [] ARE IN MILLIMETERS.</div> <div>TOLERANCES: <div>X = ±.2 [5] .XX = ±.02 [0.5] .XXX = ±.005 [0.13]</div><div>FRACTIONS: ± 1/32 ANGLES ± 1°</div><div>CABLE LENGTH TOLERANCES: ≤ 12 [305] = ±.125 [-] ≤ 12 [305] = ±.125 [-] ≤ 60 [1524] = ±.120 [3.048] ≤ 60 [1524] = ±.120 [3.048] ≤ 120 [3048</div></div>	
---	--

THE INFORMATION CONTAINED IN THIS DRAWING IS THE SOLE PROPERTY OF INFINITE ELECTRONICS, INC. ANY REPRODUCTION IN PART OR WHOLE WITHOUT THE WRITTEN PERMISSION OF INFINITE ELECTRONICS, INC. IS PROHIBITED. THESE COMMODITIES, TECHNOLOGY OR SOFTWARE WERE EXPORTED FROM THE UNITED STATES IN ACCORDANCE WITH THE EXPORT ADMINISTRATION REGULATIONS. DIVERSION CONTRARY TO U.S. LAW PROHIBITED.

TT DS Rev-D4 Adda