

AC Surge Protector SPD I2R-50K DIN-Rail 240 Vac Three-Phase Delta MOV 50 kA, UL 1449 5th Ed. Type 1ca



I2R-50KD240

Features

- UL1449 5th Ed. Type 1ca
- High Capacity MOV Protection
- Visual Suppression Status Indicator
- Dry Contact Remote Annunciation Terminals
- DIN-Rail Mount
- No External Backup Fuses Required

Applications

- Electrical Panelboards
- Industrial Automation
- Intelligent Transportation Systems
- Communications Base Stations
- IT & Data Centers
- Switchgear
- Motor Control Centers
- Automatic Transfer Switches
- Wastewater Treatment

Description

AC surge protector (also known as SPD or lightning protector) I2R-50KD240 from Transtector is a UL1449 5th Ed. Type 1ca DIN-Rail style SPD that utilizes state of the art MOV technology to protect critical equipment that operates on a 240 Vac Three-Phase Delta electrical service. This surge protector provides effective protection against electrical transient surges that are generated both by external lightning events and by internal switching events and supports long-term system reliability by safely shunting high amounts of transient energy while maintaining a very low clamping voltage.

Electrical Specifications

Description	Minimum	Typical	Maximum	Units
Service Voltages		240		Vac
Service Type		Three-Phase Delta		
Maximum Continuous Operating Voltage (MCOV) L - G			275	Vac

Surge Protection Specification

Description	Minimum	Typical	Maximum	Units
Surge Protection Technology		MOV		
Protection Modes		L-L, L-G		
8/20 μ s Surge Current			50	kA
Nominal Discharge Current Rating (In)		20		kA
VPR 8/20 μ s L - L			2,000	Vpk
VPR 8/20 μ s L - G			1,000	Vpk

Mechanical Specifications

Size

Height	2.79 in	[70.87 mm].
Width	2.13 in	[54.1 mm]
Depth	3.54 in	[89.92 mm]

AC Surge Protector SPD I2R-50K DIN-Rail 240 Vac Three-Phase Delta MOV 50 kA, UL 1449 5th Ed. Type 1ca



I2R-50KD240

Weight	0.87 lbs	[394.63 g]
Housing Material and Plating	ABS	

Environmental Specifications

Temperature Range (Operational)	-40 to 85 deg C
Temperature Range (Storage)	-40 to 85 deg C
Environmental Protection Rating	IP20

Installation

Mount Type	DIN Rail
------------	----------

Compliance Certifications

Certifications	UL1449 5th Ed.
----------------	----------------

Transtector Systems specializes in protection of highly sensitive, low voltage equipment through its patented, non-degrading silicon diode technology and custom filters. Our power quality expertise translates into a diverse product offering including AC, DC, and signal applications as well as integrated cabinets, power distribution panels and EMP hardened devices.

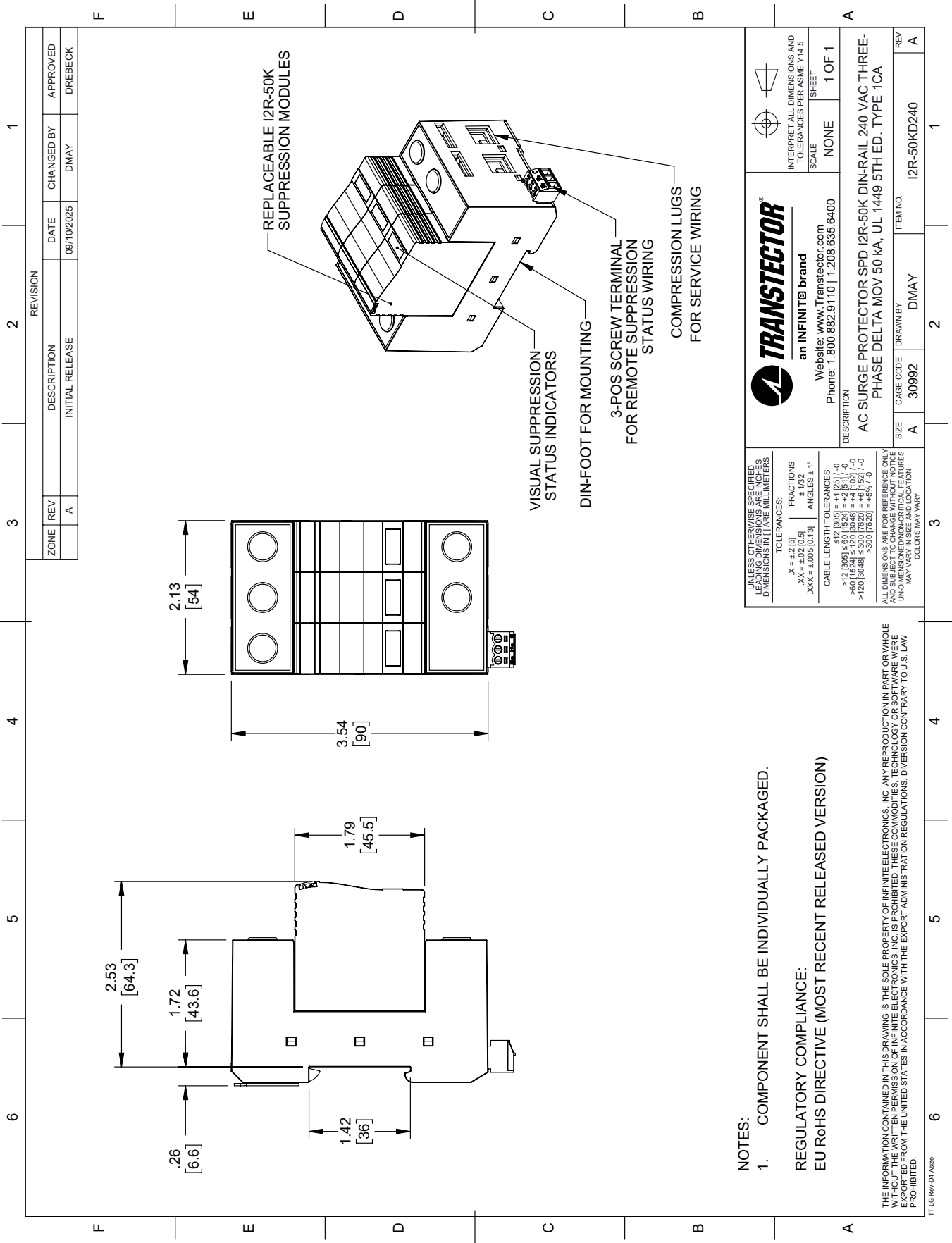
Click the following link (or enter part number in "SEARCH" on website) to obtain additional part information including price, inventory and certifications: [AC Surge Protector SPD I2R-50K DIN-Rail 240 Vac Three-Phase Delta MOV 50 kA, UL 1449 5th Ed. Type 1ca I2R-50KD240](#)

URL: <https://www.transtector.com/ac-surge-protector-spd-dr-din-rail-i2r-50kd240>

The information contained within this document is accurate to the best of our knowledge and representative of the part described herein. It may be necessary to make modifications to the part and/or the documentation of the part in order to implement improvements. Transtector reserves the right to make such changes as required. Unless otherwise stated, all specifications are nominal. Transtector does not make any representation or warranty regarding the suitability of the part described herein for any particular purpose, and Transtector does not assume liability arising out of the use of any part or document.

I2R-50KD240 CAD Drawing

AC Surge Protector SPD I2R-50K DIN-Rail 240 Vac Three-Phase Delta MOV 50 kA, UL 1449 5th Ed. Type 1ca



NOTES:
 1. COMPONENT SHALL BE INDIVIDUALLY PACKAGED.
 REGULATORY COMPLIANCE:
 EU RoHS DIRECTIVE (MOST RECENT RELEASED VERSION)

UNLESS OTHERWISE SPECIFIED, DIMENSIONS IN PARENT BRACKETS ARE IN MILLIMETERS

TOLERANCES:
 X = ±.2 [5] FRACTIONS
 XX = ±.02 [5]
 .XXX = ±.005 [0.13] ANGLES ± 1°

CABLE LENGTH TOLERANCES:
 <math>0 < 12 [300]</math> ±.01 [0.25]
 <math>12 [300] < 60 [1524]</math> ±.02 [0.51]
 <math>60 [1524] < 120 [3048]</math> ±.04 [1.02]
 <math>120 [3048] < 300 [7620]</math> ±.08 [2.03]
 >300 [7620] ±.09 [2.29]

ALL DIMENSIONS ARE FOR REFERENCE ONLY. DIMENSIONS OF NON-CRITICAL FEATURES MAY VARY IN SIZE AND LOCATION. COLORS MAY VARY.

TRANSTECTOR
 an INFINITE brand
 Website: www.Transvector.com
 Phone: 1.800.882.9110 | 1.208.635.6400

INTERPRET ALL DIMENSIONS AND TOLERANCES PER ASME Y14.5

SCALE NONE SHEET 1 OF 1

DESCRIPTION
 AC SURGE PROTECTOR SPD I2R-50K DIN-RAIL 240 VAC THREE-PHASE DELTA MOV 50 kA, UL 1449 5TH ED. TYPE 1CA

SIZE A CAGE CODE 30992 DRAWN BY DMAY ITEM NO. I2R-50KD240

REV A

THE INFORMATION CONTAINED IN THIS DRAWING IS THE SOLE PROPERTY OF INFINITE ELECTRONICS, INC. ANY REPRODUCTION IN PART OR WHOLE WITHOUT THE WRITTEN PERMISSION OF INFINITE ELECTRONICS, INC. IS PROHIBITED. THESE COMMODITIES, TECHNOLOGY OR SOFTWARE WERE DEVELOPED FROM THE UNITED STATES IN ACCORDANCE WITH THE EXPORT ADMINISTRATION REGULATIONS. DIVERSION CONTRARY TO U.S. LAW IS PROHIBITED.

TT LG Rev-D4 Asize