

AC Surge Protector SPD APEX IMAX Panel 120/208 Vac 3-Phase
 Wye SASD, MOV 160 kA, UL 1449 4th Ed. Type 2 HEMP Tested

HT-AO-IMAX-120Y APEX IMAX HT 120Y



Features

- SASD/MOV Hybrid
- Tested for HEMP and Lightning
- Dual-Mode DC Protection
- 80dB Shielding Effectiveness
- Compression Lug Wiring
- Wall Mount

Applications

- Government Facilities
- Military Installations and Mobile Equipment
- Telecommunications base stations
- Backup Power Systems
- Emergency Management Systems
- First Responder Sites
- IT & data centers
- Banking & Finance
- SCADA Systems
- LMR

Description

EMP protector (also known as HEMP/NEMP protector) HT-AO-IMAX-120Y from Transtector is a specially designed high-performance surge protector that has been tested to the most extreme early time and intermediate time High Altitude Electromagnetic Pulse environment from MIL-STD-188-125. This EMP protector utilizes state of the art SASD/MOV technology and enhanced electrical shielding features to protect critical equipment against this potentially devastating threat. All Transtector HEMP Tested EMP surge protectors are available in stock with same day shipping.

Electrical Specifications

| Description | Minimum | Typical | Maximum | Units |
|---|---------|-------------|---------|-------|
| Service Voltages | | 120/208 | | Vac |
| Service Type | | 3-Phase Wye | | |
| Maximum Continuous Operating Voltage (MCOV) | | | | |
| L - L | | | 276 | Vac |
| L - N | | | 138 | Vac |

Surge Protection Specification

| Description | Minimum | Typical | Maximum | Units |
|-----------------------------|---------|-----------|---------|-------|
| Surge Protection Technology | | SASD, MOV | | |
| Protection Modes | | L-N, L-L | | |
| 8/20µs Surge Current | | | 160 | kA |
| 10/1000µs Surge Current | | | 1.5 | kA |

Click the following link (or enter part number in "SEARCH" on website) to obtain additional part information including price, inventory and certifications:
[AC Surge Protector SPD APEX IMAX Panel 120/208 Vac 3-Phase Wye SASD, MOV 160 kA, UL 1449 4th Ed. Type 2 HEMP Tested HT-AO-IMAX-120Y](#)

AC Surge Protector SPD APEX IMAX Panel 120/208 Vac 3-Phase
 Wye SASD, MOV 160 kA, UL 1449 4th Ed. Type 2 HEMP Tested

HT-AO-IMAX-120Y APEX IMAX HT 120Y



| | | |
|---------------------------------------|-------|------|
| 20/500ns HEMP E1 Surge Current | 5 | kA |
| 1.5/3-5000µs E2 Surge Current | 250 | A |
| Nominal Discharge Current Rating (In) | 20 | kA |
| VPR 8/20µs | | |
| L - L | 1,000 | Vpk |
| L - N | 700 | Vpk |
| Response Time | 5 | ns |
| Shielding Effectiveness | 80 | dB |
| SCCR (Short Circuit Current Rating) | 65 | kAIC |

Mechanical Specifications

Size

| | | |
|------------------------------|---------------------------------|------------|
| Height | 12 in | [304.8 mm] |
| Width | 10 in | [254 mm] |
| Depth | 8 in | [203.2 mm] |
| Weight | 24 lbs | [10.89 kg] |
| Housing Material and Plating | 17 GA Plated Steel, Powder Coat | |

Environmental Specifications

| | |
|---------------------------------|---------------------|
| Temperature Range (Operational) | -40 to +75 deg C |
| Environmental Protection Rating | UL50 Type 4 |
| Humidity | 100% non-condensing |

Installation

| | |
|--|----------------|
| Mount Type | Panel |
| Service Wiring Terminal Terminals | #4 to #10 AWG |
| Status Indication Terminal 3-Pin Connector | #14 to #22 AWG |

Compliance Certifications

| | |
|-----------------------------|---------------------------------|
| UL Compliant Certifications | Yes |
| | UL 1449 4th Ed. |
| | HEMP Tested per MIL-STD-188-125 |
| | HEMP Protection Levels 1,2,3 |

Click the following link (or enter part number in "SEARCH" on website) to obtain additional part information including price, inventory and certifications:
[AC Surge Protector SPD APEX IMAX Panel 120/208 Vac 3-Phase Wye SASD, MOV 160 kA, UL 1449 4th Ed. Type 2 HEMP Tested HT-AO-IMAX-120Y](#)

AC Surge Protector SPD APEX IMAX Panel 120/208 Vac 3-Phase
Wye SASD, MOV 160 kA, UL 1449 4th Ed. Type 2 HEMP Tested

HT-AO-IMAX-120Y
APEX IMAX HT 120Y



Military Grade Yes

Transtector Systems specializes in protection of highly sensitive, low voltage equipment through its patented, non-degrading silicon diode technology and custom filters. Our power quality expertise translates into a diverse product offering including AC, DC, and signal applications as well as integrated cabinets, power distribution panels and EMP hardened devices.

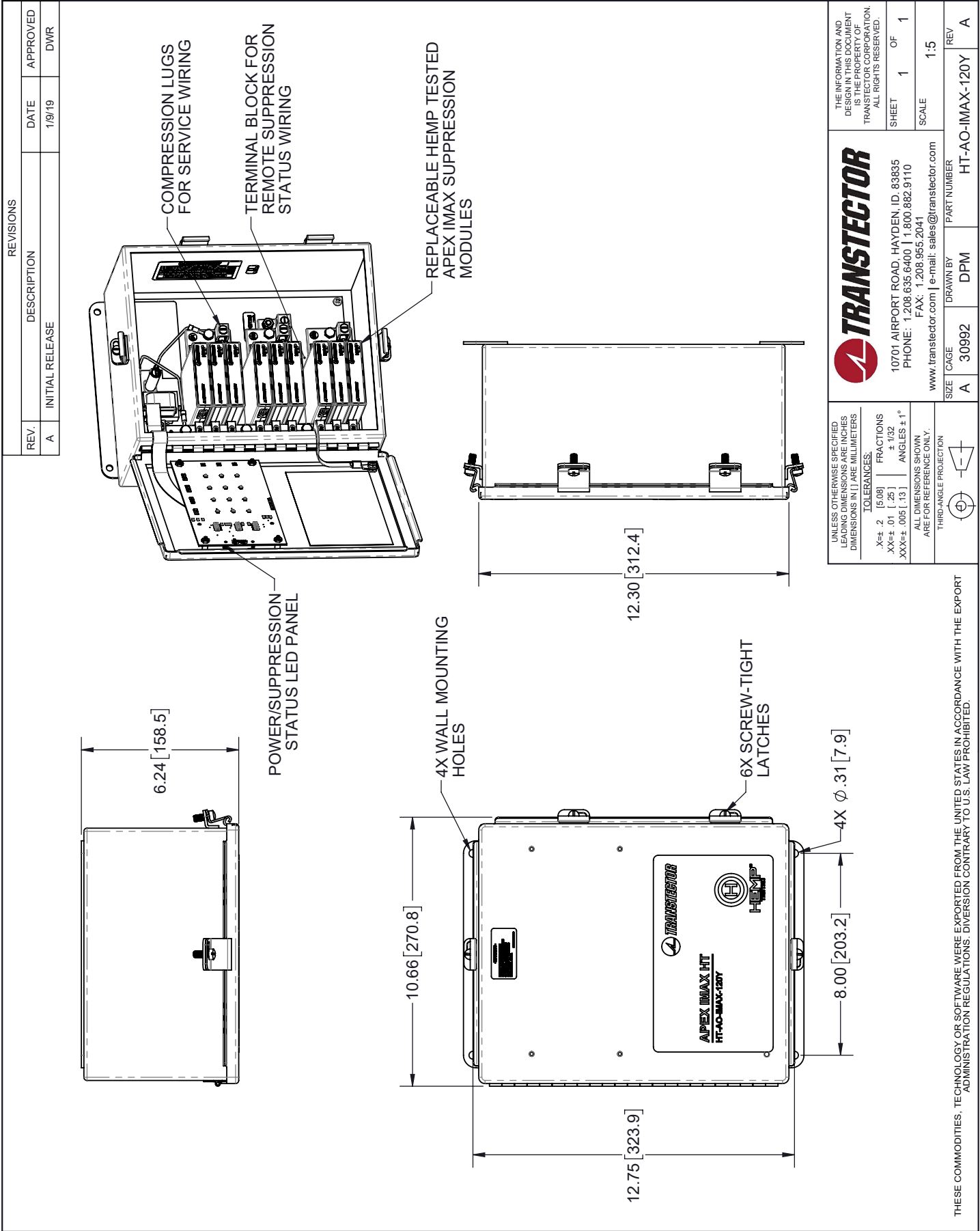
Click the following link (or enter part number in "SEARCH" on website) to obtain additional part information including price, inventory and certifications: [AC Surge Protector SPD APEX IMAX Panel 120/208 Vac 3-Phase Wye SASD, MOV 160 kA, UL 1449 4th Ed. Type 2 HEMP Tested HT-AO-IMAX-120Y](https://www.transtector.com/ac-surge-protector-spd-apex-imax-panel-120/208-vac-3-phase-wye-sasd-mov-160-ka-ul-1449-4th-ed-type-2-heimp-tested-ht-ao-imax-120y)

URL: <https://www.transtector.com/ac-surge-protector-spd-apex-imax-panel-ht-ao-imax-120y-p.aspx>

The information contained in this document is accurate to the best of our knowledge and representative of the part described herein. It may be necessary to make modifications to the part and/or the documentation of the part, in order to implement improvements. Transtector reserves the right to make such changes as required. Unless otherwise stated, all specifications are nominal. Transtector does not make any representation or warranty regarding the suitability of the part described herein for any particular purpose, and Transtector does not assume any liability arising out of the use of any part or documentation.

AC Surge Protector SPD APEX IMAX Panel 120/208 Vac 3-Phase Wye
SASD, MOV 160 kA, UL 1449 4th Ed. Type 2 HEMP Tested

HT-AO-IMAX-120Y CAD Drawing



THESE COMMODITIES, TECHNOLOGY OR SOFTWARE WERE EXPORTED FROM THE UNITED STATES IN ACCORDANCE WITH THE EXPORT ADMINISTRATION REGULATIONS. DIVERSION CONTRARY TO U.S. LAW PROHIBITED.

T-Rev A