

AC Surge Protector SPD APEX IMAX Panel 120/240 Vac Split-Phase
 SASD, MOV 160 kA, UL 1449 4th Ed. Type 2 HEMP Tested

HT-AO-IMAX-120T APEX IMAX HT 120T



Features

- SASD/MOV Hybrid
- Tested for HEMP and Lightning
- Dual-Mode DC Protection
- 80dB Shielding Effectiveness
- Compression Lug Wiring
- Wall Mount

Applications

- Government Facilities
- Military Installations and Mobile Equipment
- Telecommunications base stations
- Backup Power Systems
- Emergency Management Systems
- First Responder Sites
- IT & data centers
- Banking & Finance
- SCADA Systems
- LMR

Description

EMP protector (also known as HEMP/NEMP protector) HT-AO-IMAX-120T from Transtector is a specially designed high-performance surge protector that has been tested to the most extreme early time and intermediate time High Altitude Electromagnetic Pulse environment from MIL-STD-188-125. This EMP protector utilizes state of the art SASD/MOV technology and enhanced electrical shielding features to protect critical equipment against this potentially devastating threat. All Transtector HEMP Tested EMP surge protectors are available in stock with same day shipping.

Electrical Specifications

Description	Minimum	Typical	Maximum	Units
Service Voltages		120/240		Vac
Service Type		Split-Phase		
Maximum Continuous Operating Voltage (MCOV)				
L - L			276	Vac
L - N			138	Vac

Surge Protection Specification

Description	Minimum	Typical	Maximum	Units
Surge Protection Technology		SASD, MOV		
Protection Modes		L-N, L-L		
8/20 μ s Surge Current			160	kA
10/1000 μ s Surge Current			1.5	kA

Click the following link (or enter part number in "SEARCH" on website) to obtain additional part information including price, inventory and certifications:
[AC Surge Protector SPD APEX IMAX Panel 120/240 Vac Split-Phase SASD, MOV 160 kA, UL 1449 4th Ed. Type 2 HEMP Tested HT-AO-IMAX-120T](#)

AC Surge Protector SPD APEX IMAX Panel 120/240 Vac Split-Phase
 SASD, MOV 160 kA, UL 1449 4th Ed. Type 2 HEMP Tested

HT-AO-IMAX-120T APEX IMAX HT 120T



20/500ns HEMP E1 Surge Current	5		kA
1.5/3-5000µs E2 Surge Current	250		A
Nominal Discharge Current Rating (In)	20		kA
VPR 8/20µs			
L - L		1,000	Vpk
L - N		700	Vpk
Response Time		5	ns
Shielding Effectiveness	80		dB
SCCR (Short Circuit Current Rating)	65		kAIC

Mechanical Specifications

Size

Height	12 in	[304.8 mm]
Width	10 in	[254 mm]
Depth	8 in	[203.2 mm]
Weight	24 lbs	[10.89 kg]
Housing Material and Plating	15 GA Plated Steel, Powder Coat	

Environmental Specifications

Temperature Range (Operational)	-40 to +75 deg C
Environmental Protection Rating	UL50 Type 4
Humidity	100% non-condensing

Installation

Mount Type	Panel
Service Wiring Terminal Terminals	#4 to #10 AWG
Status Indication Terminal 3-Pin Connector	#14 to #22 AWG

Compliance Certifications

UL Compliant Certifications	Yes UL 1449 4th Ed. HEMP Tested per MIL-STD-188-125 HEMP Protection Levels 1,2,3
-----------------------------	-------------------------------------------------------------------------------------------

Click the following link (or enter part number in "SEARCH" on website) to obtain additional part information including price, inventory and certifications:
[AC Surge Protector SPD APEX IMAX Panel 120/240 Vac Split-Phase SASD, MOV 160 kA, UL 1449 4th Ed. Type 2 HEMP Tested HT-AO-IMAX-120T](#)

AC Surge Protector SPD APEX IMAX Panel 120/240 Vac Split-Phase
SASD, MOV 160 kA, UL 1449 4th Ed. Type 2 HEMP Tested

HT-AO-IMAX-120T
APEX IMAX HT 120T



Military Grade Yes

Transtector Systems specializes in protection of highly sensitive, low voltage equipment through its patented, non-degrading silicon diode technology and custom filters. Our power quality expertise translates into a diverse product offering including AC, DC, and signal applications as well as integrated cabinets, power distribution panels and EMP hardened devices.

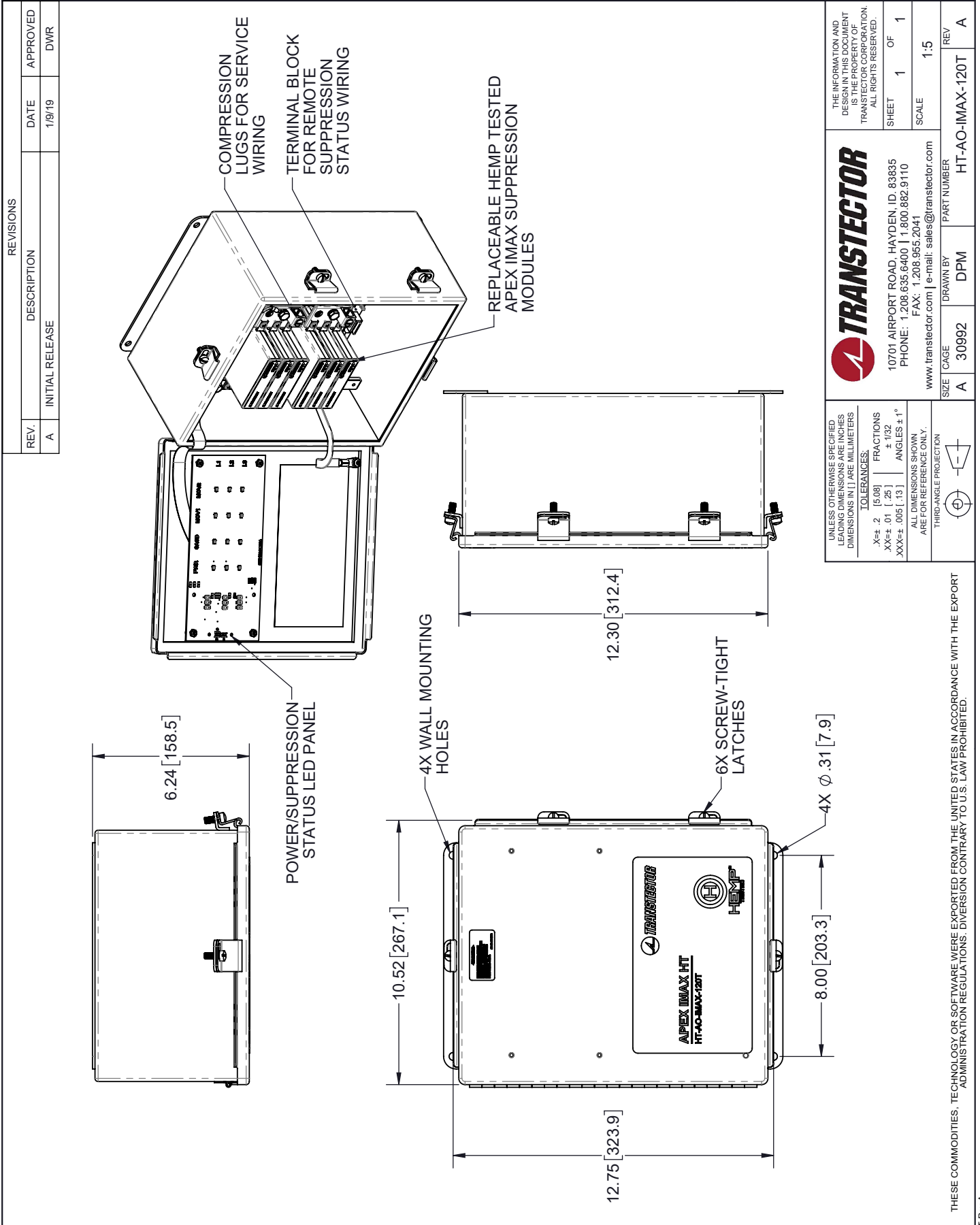
Click the following link (or enter part number in “SEARCH” on website) to obtain additional part information including price, inventory and certifications: [AC Surge Protector SPD APEX IMAX Panel 120/240 Vac Split-Phase SASD, MOV 160 kA, UL 1449 4th Ed. Type 2 HEMP Tested HT-AO-IMAX-120T](#)

URL: <https://www.transtector.com/ac-surge-protector-spd-apex-imax-panel-ht-ao-imax-120t-p.aspx>

The information contained in this document is accurate to the best of our knowledge and representative of the part described herein. It may be necessary to make modifications to the part and/or the documentation of the part, in order to implement improvements. Transtector reserves the right to make such changes as required. Unless otherwise stated, all specifications are nominal. Transtector does not make any representation or warranty regarding the suitability of the part described herein for any particular purpose, and Transtector does not assume any liability arising out of the use of any part or documentation.

AC Surge Protector SPD APEX IMAX Panel 120/240 Vac Split-Phase
 SASD, MOV 160 kA, UL 1449 4th Ed. Type 2 HEMP Tested

HT-AO-IMAX-120T CAD Drawing



UNLESS OTHERWISE SPECIFIED LEADING DIMENSIONS ARE INCHES DIMENSIONS IN [] ARE MILLIMETERS

TOLERANCES:
 .X±.2 [5.08] FRACTIONS ±.1/32
 .XX±.01 [.25] ANGLES ±1°
 XXX±.005 [.13]

ALL DIMENSIONS SHOWN ARE FOR REFERENCE ONLY.
 THIRD-ANGLE PROJECTION

THE INFORMATION AND DESIGN IN THIS DOCUMENT IS THE PROPERTY OF TRANSECTOR CORPORATION. ALL RIGHTS RESERVED.

TRANSECTOR
 10701 AIRPORT ROAD, HAYDEN, ID, 83835
 PHONE: 1.208.635.6400 | 1.800.882.9110
 FAX: 1.208.955.2041
 www.transtector.com | e-mail: sales@transtector.com

SHEET 1 OF 1
 SCALE 1:5

SIZE CAGE DRAWN BY PART NUMBER REV
 A 30992 DPM HT-AO-IMAX-120T A

THESE COMMODITIES, TECHNOLOGY OR SOFTWARE WERE EXPORTED FROM THE UNITED STATES IN ACCORDANCE WITH THE EXPORT ADMINISTRATION REGULATIONS. DIVERSION CONTRARY TO U.S. LAW PROHIBITED.

T-Rev A