

LV Fuse, 80A, Fast Acting, Current Limiting, Cartridge



## FOCP-ACDC-80-CF

LV Fuse, 80A, Fast Acting, Current Limiting, Cartridge

### Features

- High Speed Fusing Characteristics
- High Current Breaking Capacity
- Good Current Limiting Performance
- Utilization Category: aR
- Cartridge Style Mounting
- UL 248-13 Certified

### Applications

- Electric Vehicles
- DC Power Systems
- Power Conversion Equipment Protection
- Battery Protection

### Description

AC/DC power fuse (also known as overcurrent protector) FOCP-ACDC-80-CF from Transtector is a UL248-13 cartridge style device that utilizes state of the art high speed fusing technology to protect a wide range of applications from physical damage and fire via good current limiting performance and high current breaking capacity. This overcurrent protector offers a cartridge style mounting type for electrical services with up to a 80 A maximum current rating. Transtector AC/DC power fuses are available in stock with same day shipping.

### Electrical Specifications

Description	Minimum	Typical	Maximum	Units
Rated Current (In)			80	A
Rated DC Voltage			1,000	Vdc
DC Breaking Capacity (I1)			10	kA
Watt Loss			20.8	W

### Mechanical Specifications

#### Size

Height	0.9 in	[22.86 mm]
Width	0.9 in	[22.86 mm]
Depth	2.3 in	[58.42 mm]
Weight	0.17 lbs	[77.11 g]

### Environmental Specifications

Temperature Range (Operational)	-40 to +80 deg C
Temperature Range (Storage)	-40 to +80 deg C
Humidity	95% non-condensing
Altitude	2000m (derate In linearly to 0.85 @ 5000m)

Click the following link (or enter part number in "SEARCH" on website) to obtain additional part information including price, inventory and certifications:  
[LV Fuse, 80A, Fast Acting, Current Limiting, Cartridge FOCP-ACDC-80-CF](#)

LV Fuse, 80A, Fast Acting, Current Limiting, Cartridge

## FOCP-ACDC-80-CF

LV Fuse, 80A, Fast Acting, Current Limiting, Cartridge



Environmental Specification Notes:  
Indoor

### Installation

Mount Type

Cartridge

### Compliance Certifications

UL Compliant  
Certifications

Yes  
UL 248-13

Click the following link (or enter part number in "SEARCH" on website) to obtain additional part information including price, inventory and certifications:  
[LV Fuse, 80A, Fast Acting, Current Limiting, Cartridge FOCP-ACDC-80-CF](#)

LV Fuse, 80A, Fast Acting, Current Limiting, Cartridge

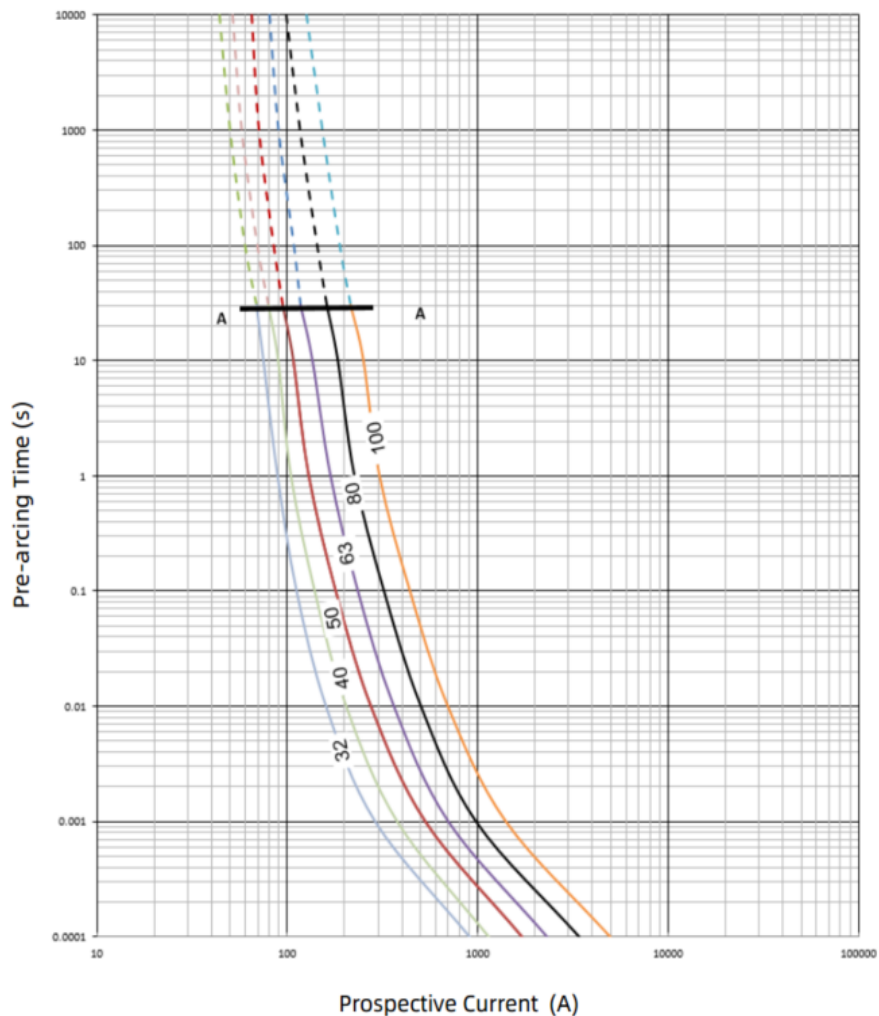
## FOCP-ACDC-80-CF

LV Fuse, 80A, Fast Acting, Current Limiting, Cartridge



### Typical Performance Data

Time-Current Characteristics (reference only)



Click the following link (or enter part number in "SEARCH" on website) to obtain additional part information including price, inventory and certifications:  
[LV Fuse, 80A, Fast Acting, Current Limiting, Cartridge FOCP-ACDC-80-CF](#)

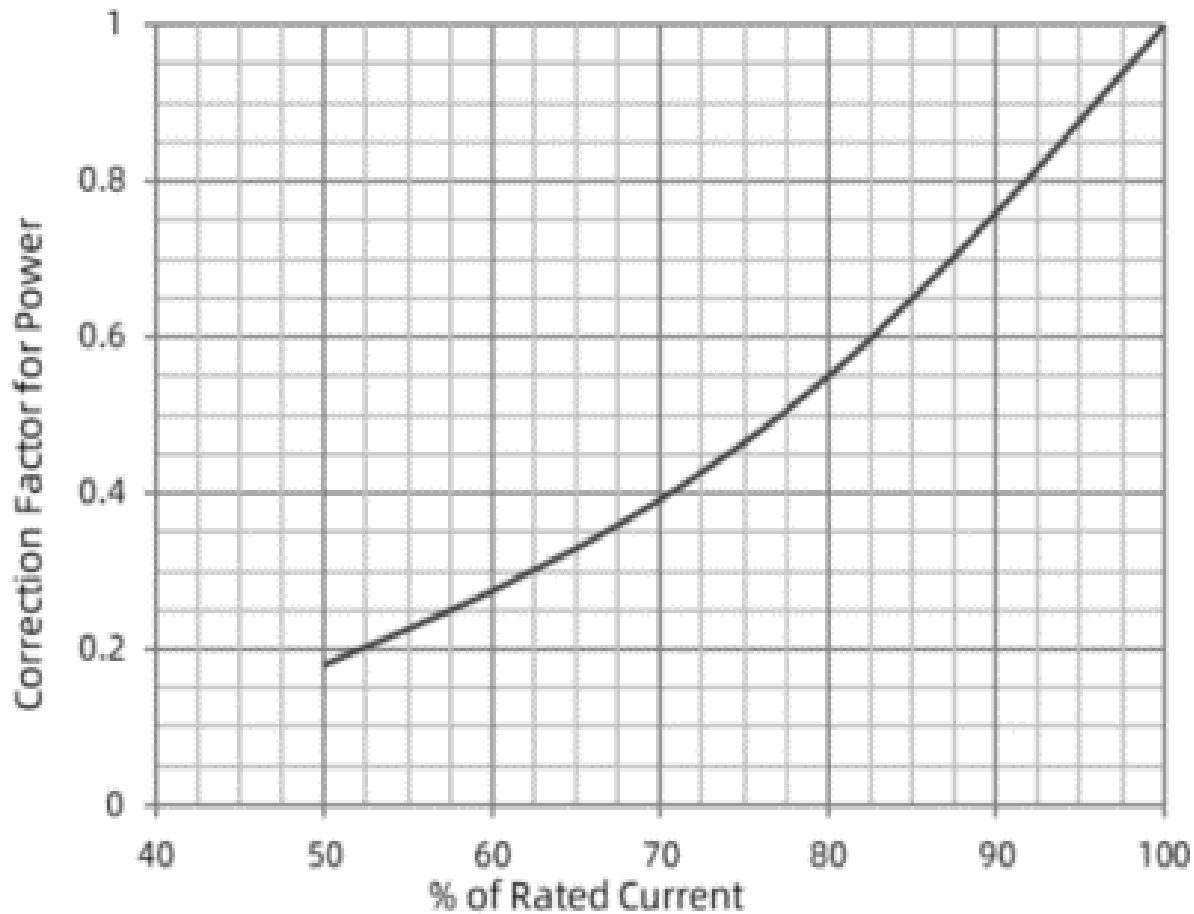
LV Fuse, 80A, Fast Acting, Current Limiting, Cartridge

### FOCP-ACDC-80-CF

LV Fuse, 80A, Fast Acting, Current Limiting, Cartridge



## Power Dissipation Curve



Click the following link (or enter part number in "SEARCH" on website) to obtain additional part information including price, inventory and certifications:  
[LV Fuse, 80A, Fast Acting, Current Limiting, Cartridge FOCP-ACDC-80-CF](#)

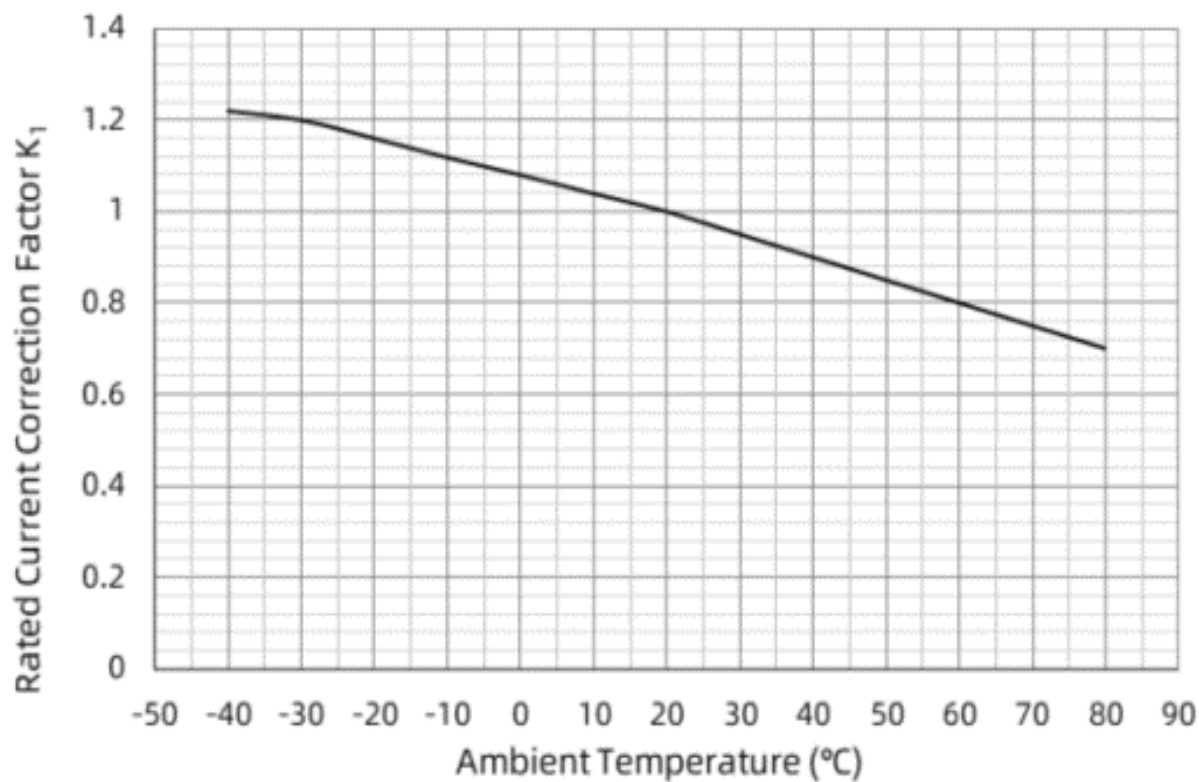
LV Fuse, 80A, Fast Acting, Current Limiting, Cartridge



### FOCP-ACDC-80-CF

LV Fuse, 80A, Fast Acting, Current Limiting, Cartridge

Ambient Temperature Current Derating Curve



Click the following link (or enter part number in "SEARCH" on website) to obtain additional part information including price, inventory and certifications:  
[LV Fuse, 80A, Fast Acting, Current Limiting, Cartridge FOCP-ACDC-80-CF](#)

LV Fuse, 80A, Fast Acting, Current Limiting, Cartridge

## **FOCP-ACDC-80-CF**

LV Fuse, 80A, Fast Acting, Current Limiting, Cartridge



Transtector Systems specializes in protection of highly sensitive, low voltage equipment through its patented, non-degrading silicon diode technology and custom filters. Our power quality expertise translates into a diverse product offering including AC, DC, and signal applications as well as integrated cabinets, power distribution panels and EMP hardened devices.

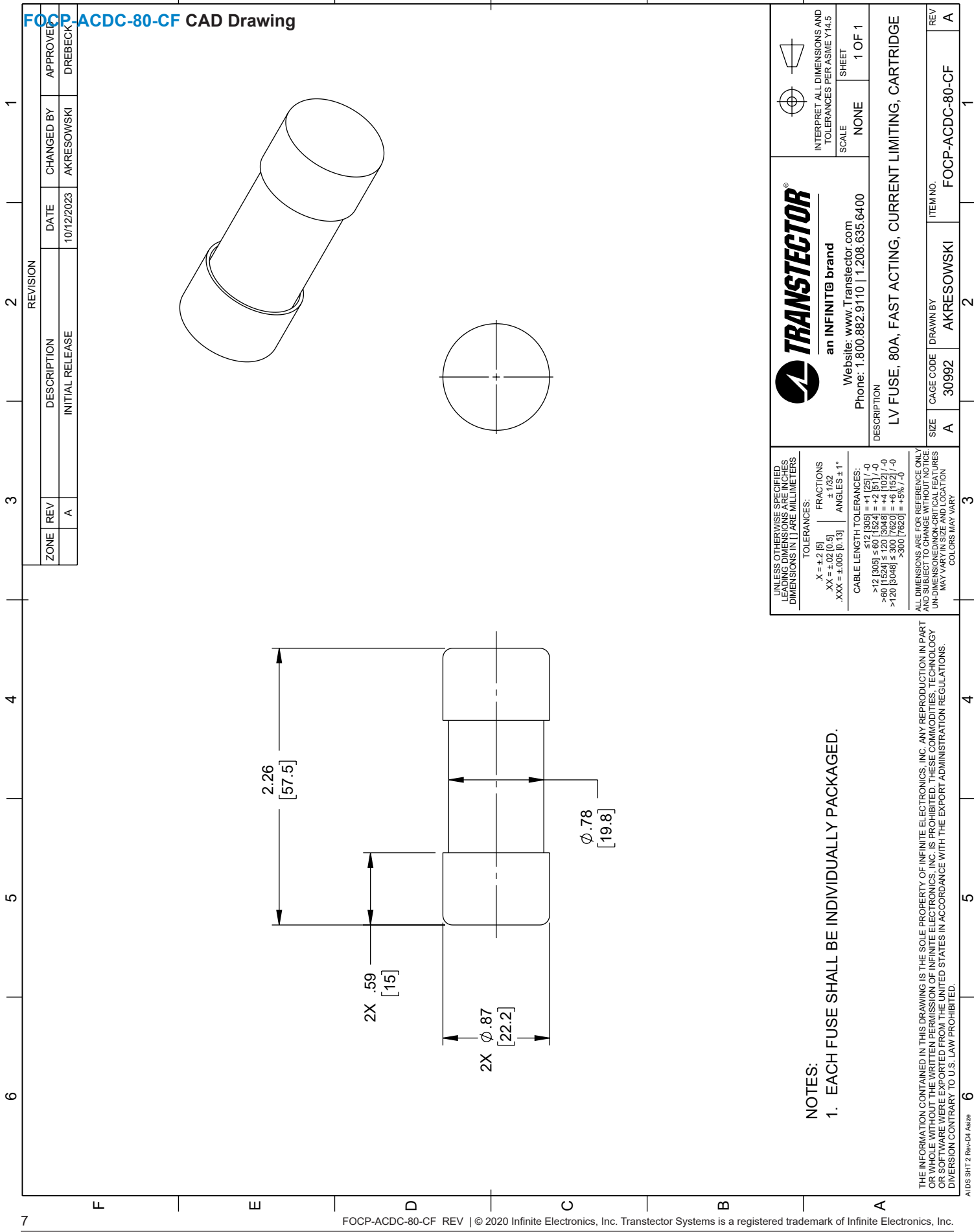
Click the following link (or enter part number in "SEARCH" on website) to obtain additional part information including price, inventory and certifications: [LV Fuse, 80A, Fast Acting, Current Limiting, Cartridge FOCP-ACDC-80-CF](#)

URL: <https://www.transtector.com/focp-acdc-80-cf-p.aspx>

The information contained in this document is accurate to the best of our knowledge and representative of the part described herein. It may be necessary to make modifications to the part and/or the documentation of the part, in order to implement improvements. Transtector reserves the right to make such changes as required. Unless otherwise stated, all specifications are nominal. Transtector does not make any representation or warranty regarding the suitability of the part described herein for any particular purpose, and Transtector does not assume any liability arising out of the use of any part or documentation.

LV Fuse, 80A, Fast Acting, Current Limiting, Cartridge

FOCP-ACDC-80-CF CAD Drawing



NOTES:  
1. EACH FUSE SHALL BE INDIVIDUALLY PACKAGED.

UNLESS OTHERWISE SPECIFIED, LEADING DIMENSIONS ARE IN INCHES. DIMENSIONS IN [ ] ARE MILLIMETERS.	
TOLERANCES:	FRACTIONS
X = ±.2 [5]	+1/32
XX = ±.02 [5]	+1/16
XXX = ±.005 [0.13]	ANGLES ±1°
CABLE LENGTH TOLERANCES:	
≤12 [305] = ±1 [25] / -0	
>12 [305] ≤60 [1524] = +2 [51] / -0	
>60 [1524] ≤120 [3048] = +4 [102] / -0	
>120 [3048] ≤300 [7620] = +5 [127] / -0	
>300 [7620] = +5% / -0	
ALL DIMENSIONS ARE FOR REFERENCE ONLY AND SUBJECT TO CHANGE WITHOUT NOTICE. UNDIMENSIONED CRITICAL FEATURES MAY VARY IN SIZE AND LOCATION. COLORS MAY VARY.	

<b>TRANSTECTOR</b> an INFINIT <sup>®</sup> brand Website: <a href="http://www.Transvector.com">www.Transvector.com</a> Phone: 1.800.882.9110   1.208.635.6400		INTERPRET ALL DIMENSIONS AND TOLERANCES PER ASME Y14.5	
DESCRIPTION LV FUSE, 80A, FAST ACTING, CURRENT LIMITING, CARTRIDGE		SCALE NONE	SHEET 1 OF 1
SIZE A	CAGE CODE 30992	DRAWN BY AKRESOWSKI	REV A
ITEM NO. FOCP-ACDC-80-CF		1	