

## EV Charging Adapter, J1772 TO NACS, 80A



### EVCA-1772NACS-80A

#### Features

- SAEJ1772 Charging Inlet
- Tesla/NACS Charging Plug
- Fits Tesla Models 3/S/X/Y
- Accepts Single-Phase AC power up to 240Vac
- Delivers up to 80A Charging Current

#### Applications

- Level 1 and 2 Electric Vehicle Charging Stations (EVSE)
- Charging Centers
- Shopping Centers
- Convenience Stores
- Businesses
- Housing Units
- Entertainment Centers
- Parking Garages

#### Description

Electric vehicle charging adapter EVCA-1772NACS-80A from Transtector is a robust connector that allows for vehicles with Tesla/NACS inlets to utilize Level 1 and Level 2 charging stations with a SAEJ1772 type charging plug. This charging adapter accepts single-phase AC power up to 240Vac and delivers a maximum of 80A of charging current to the EV. Transtector EV charging adapters are available in stock with same day shipping.

#### Electrical Specifications

Description	Minimum	Typical	Maximum	Units
Service Voltages	120		240	Vac
Service Type		Single-Phase		
Maximum Continuous Operating Voltage (MCOV) L - L			300	Vac
Maximum Continuous Operating Voltage (MCOV) L - N			150	Vac

#### Mechanical Specifications

##### Size

Height	3.31 in	[84.07 mm].
Width	2 in	[50.8 mm]
Depth	4.13 in	[104.9 mm]
Weight	1.2 lbs	[544.31 g]

#### Environmental Specifications

Temperature Range (Operational)	-30 to 50 deg C
Temperature Range (Storage)	-30 to 65 deg C
Environmental Protection Rating	IP55

#### Installation

Mount Type	Connect to EVSE Plug
------------	----------------------

EV Charging Adapter, J1772 TO NACS, 80A



## EVCA-1772NACS-80A

---

### Compliance Certifications

Transtector Systems specializes in protection of highly sensitive, low voltage equipment through its patented, non-degrading silicon diode technology and custom filters. Our power quality expertise translates into a diverse product offering including AC, DC, and signal applications as well as integrated cabinets, power distribution panels and EMP hardened devices.

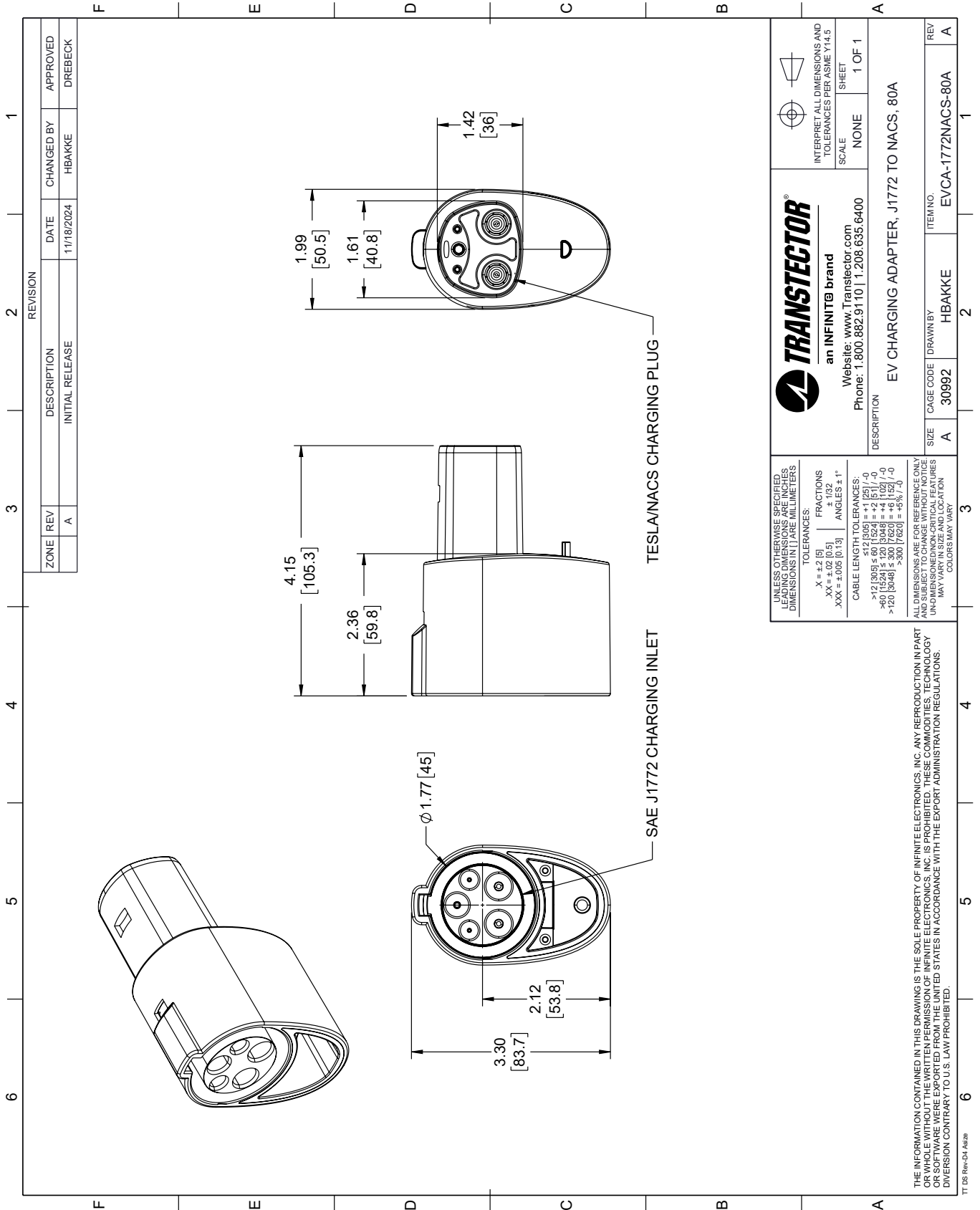
Click the following link (or enter part number in "SEARCH" on website) to obtain additional part information including price, inventory and certifications: [EV Charging Adapter, J1772 TO NACS, 80A EVCA-1772NACS-80A](https://www.transtector.com/evca-1772nacs-80a-p.aspx)

URL: <https://www.transtector.com/evca-1772nacs-80a-p.aspx>

The information contained within this document is accurate to the best of our knowledge and representative of the part described herein. It may be necessary to make modifications to the part and/or the documentation of the part in order to implement improvements. Transtector reserves the right to make such changes as required. Unless otherwise stated, all specifications are nominal. Transtector does not make any representation or warranty regarding the suitability of the part described herein for any particular purpose, and Transtector does not assume liability arising out of the use of any part or document.

# EVCA-1772NACS-80A CAD Drawing

EV Charging Adapter, J1772 TO NACS, 80A



REVISION		DATE	CHANGED BY	APPROVED
ZONE	REV	DESCRIPTION	INITIAL RELEASE	
A				DREBECK

**TRANSTECTOR**  
an INFINITE brand

Website: [www.Transvector.com](http://www.Transvector.com)  
Phone: 1.800.882.9110 | 1.208.635.6400

UNLESS OTHERWISE SPECIFIED, LEADING DIMENSIONS ARE IN INCHES. DIMENSIONS IN [ ] ARE MILLIMETERS.

TOLERANCES:

.X = +.2 [5]	FRACTIONS	±.132
.XX = ±.02 [0.5]		
.XXX = ±.005 [0.13]	ANGLES ± 1°	

CABLE LENGTH TOLERANCES:

>12 [305] ≤ 60 [1524]	±.12 [3.05]	±.1 [25]
>60 [1524] ≤ 120 [3048]	±.2 [5.1]	±.1 [-0]
>120 [3048] ≤ 300 [7620]	±.3 [7.62]	±.15 [-0]

ALL DIMENSIONS ARE FOR REFERENCE ONLY. UNDIMENSIONED/NON-CRITICAL FEATURES MAY VARY IN SIZE AND LOCATION. COLORS MAY VARY.

INTERPRET ALL DIMENSIONS AND TOLERANCES PER ASME Y14.5

SCALE: NONE

SHEET: 1 OF 1

DESCRIPTION: EV CHARGING ADAPTER, J1772 TO NACS, 80A

SIZE	CAGE CODE	DRAWN BY	ITEM NO.
A	30992	HBAKKE	EVCA-1772NACS-80A

THE INFORMATION CONTAINED IN THIS DRAWING IS THE SOLE PROPERTY OF INFINITE ELECTRONICS, INC. ANY REPRODUCTION IN PART OR WHOLE WITHOUT THE WRITTEN PERMISSION OF INFINITE ELECTRONICS, INC. IS PROHIBITED. THESE COMMODITIES, TECHNOLOGY OR SERVICE ARE EXPORTED FROM THE UNITED STATES IN ACCORDANCE WITH THE EXPORT ADMINISTRATION REGULATIONS. DIVERSION CONTRARY TO U.S. LAW PROHIBITED.

TT DS Rev-D4 A42z