

Data Surge Protector, Outdoor, 10 Gigabit Ethernet/Power over Ethernet++



ALPU-M150 ALPU Max

Features

- 10 Gigabit Ethernet/PoE++
- Patented Weatherized Wiring Grommet
- Configurable Weep Holes
- Shielded RJ-45
- Conformal Coated PCBA
- Dielectric Lube to Weatherize RJ-45 Connections
- Pole or Wall Mount

Applications

- 10 Gigabit Ethernet/PoE++ Networks
- Telecommunications Base Stations
- WISP/ISP
- IT & Data Centers
- Point-to-Point Links
- Control Lines and Sense Loops
- Oil & Gas

Description

Data surge protector (also known as SPD or lightning protector) ALPU-M150 from Transtector is an outdoor style SPD that utilizes state of the art SASD/GDT technology to protect critical equipment in Gigabit Ethernet/PoE++ protocol data networks while remaining transparent to data throughput. This surge protector provides effective protection against electrical transient surges that are generated both by external lightning events and by internal switching events and supports long-term system reliability by absorbing high amounts of transient energy while maintaining a very low clamping voltage. Transtector Data Signal surge protectors are available in stock with same day shipping.

Electrical Specifications

Description	Minimum	Typical	Maximum	Units
Connectors		Shielded RJ45		
Compatible Cables		Cat 6/6A STP, Cat 7 STP		
Data Protocols		10 Gigabit Ethernet PoE++		
Data Rate			10,000	Mb/s
Characteristic Impedance			100	Ohms
Power over Ethernet Protocols		PoE++		
Vdc Rating (Data)		48	60	Vdc
PoE Power			100	W
PoE Current Per Pin			1.5	A

Click the following link (or enter part number in "SEARCH" on website) to obtain additional part information including price, inventory and certifications:
[Data Surge Protector, Outdoor, 10 Gigabit Ethernet/Power over Ethernet++ ALPU-M150](#)

Data Surge Protector, Outdoor, 10 Gigabit Ethernet/Power over Ethernet++



ALPU-M150 ALPU Max

Surge Protection Specification

Description	Minimum	Typical	Maximum	Units
Surge Protection Technology		SASD		
Protected Pins		[1,2], [3,6], [4,5], [7,8]		
Protection Modes		L-G, L-L		
8/20 μ s Surge Current				
L-G			1	kA
L-L			0.5	kA
Response Time			5	ns

Mechanical Specifications

Size

Height	4.5 in	[114.3 mm]
Width	4 in	[101.6 mm]
Depth	1.7 in	[43.18 mm]
Weight	0.4 lbs	[181.44 g]

Environmental Specifications

Operating Temperature	-40 to +65 deg C
Storage Temperature	-40 to +75 deg C
Environmental Protection Rating	IP65, NEMA 3R
Mount Type	Pole/Wall
Installation Hardware	Combination Drive Screw
Grounding	#10 - #12 AWG Ring Terminal

Click the following link (or enter part number in "SEARCH" on website) to obtain additional part information including price, inventory and certifications:
[Data Surge Protector, Outdoor, 10 Gigabit Ethernet/Power over Ethernet++ ALPU-M150](#)

Data Surge Protector, Outdoor, 10 Gigabit Ethernet/Power over Ethernet++

ALPU-M150
ALPU Max



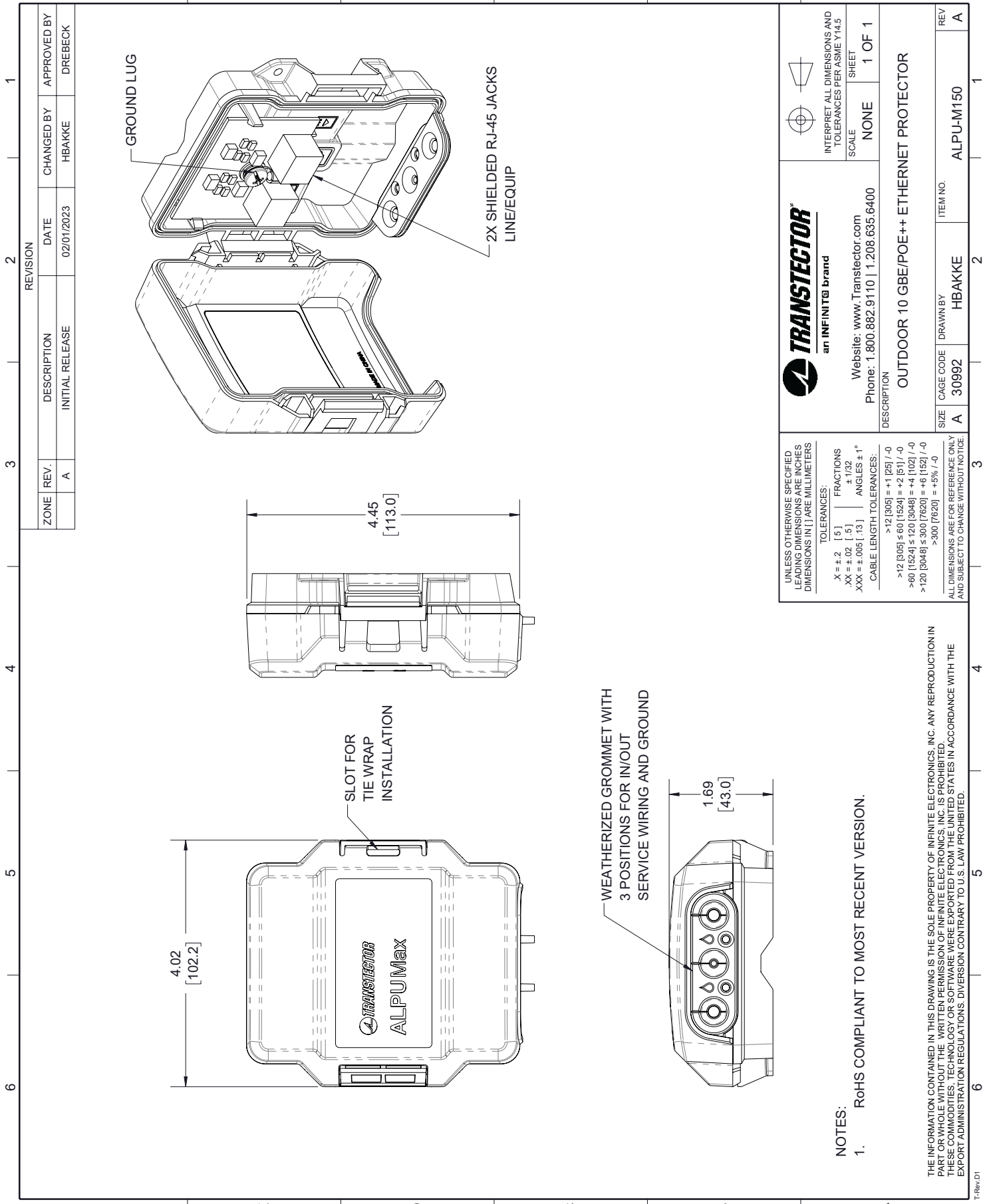
Transtector Systems specializes in protection of highly sensitive, low voltage equipment through its patented, non-degrading silicon diode technology and custom filters. Our power quality expertise translates into a diverse product offering including AC, DC, and signal applications as well as integrated cabinets, power distribution panels and EMP hardened devices.

Click the following link (or enter part number in “SEARCH” on website) to obtain additional part information including price, inventory and certifications: [Data Surge Protector, Outdoor, 10 Gigabit Ethernet/Power over Ethernet++ ALPU-M150](https://www.transtector.com/data-surge-protector-spd-alpu-outdoor-10gigabit-alpu-M150-p.aspx)

URL: <https://www.transtector.com/data-surge-protector-spd-alpu-outdoor-10gigabit-alpu-M150-p.aspx>

The information contained in this document is accurate to the best of our knowledge and representative of the part described herein. It may be necessary to make modifications to the part and/or the documentation of the part, in order to implement improvements. Transtector reserves the right to make such changes as required. Unless otherwise stated, all specifications are nominal. Transtector does not make any representation or warranty regarding the suitability of the part described herein for any particular purpose, and Transtector does not assume any liability arising out of the use of any part or documentation.

ALPU-M150 CAD Drawing



NOTES:
1. RoHS COMPLIANT TO MOST RECENT VERSION.

THE INFORMATION CONTAINED IN THIS DRAWING IS THE SOLE PROPERTY OF INFINITE ELECTRONICS, INC. ANY REPRODUCTION IN PART OR WHOLE WITHOUT THE WRITTEN PERMISSION OF INFINITE ELECTRONICS, INC. IS PROHIBITED. THESE COMMODITIES, TECHNOLOGY OR SOFTWARE WERE EXPORTED FROM THE UNITED STATES IN ACCORDANCE WITH THE EXPORT ADMINISTRATION REGULATIONS. DIVERSION CONTRARY TO U.S. LAW PROHIBITED.

 <p>an INFINITE brand</p> <p>Website: www.Transactor.com Phone: 1.800.882.9110 1.208.635.6400</p>		 INTERPRET ALL DIMENSIONS AND TOLERANCES PER ASME Y14.5 SCALE NONE SHEET 1 OF 1
DESCRIPTION OUTDOOR 10 GBE/POE++ ETHERNET PROTECTOR		
SIZE A CAGE CODE 30992 DRAWN BY HBAKKE ITEM NO. ALPU-M150	REV A	1

UNLESS OTHERWISE SPECIFIED LEADING DIMENSIONS ARE INCHES DIMENSIONS IN [] ARE MILLIMETERS

TOLERANCES:
 X = ±.2 (5) FRACTIONS
 .XX = ±.02 (.5) ±.1/32
 .XXX = ±.005 (.13) ANGLES ± 1°
 CABLE LENGTH TOLERANCES:
 >12 [305] = ±.1 [25] / -0
 >12 [305] ≤ 60 [1524] = ±.2 [51] / -0
 >60 [1524] ≤ 120 [3048] = ±.4 [102] / -0
 >120 [3048] ≤ 300 [7620] = ±.6 [152] / -0
 >300 [7620] = ±.5% / -0

ALL DIMENSIONS ARE FOR REFERENCE ONLY AND SUBJECT TO CHANGE WITHOUT NOTICE.