

DC Surge Protector SPD I2R Indoor DIN-Rail 600 Vdc,  
Full-Mode, 40 kA MOV IEC 61643-1

**1104-11-100**  
I2R SPV600 3-40



## Features

- MOV Surge Protector
- Visual Suppression Status Indicator
- Dry Contact Remote Annunciation Terminals
- DIN-Rail Mount

## Applications

- Industrial Automation
- Controls & Sense Loops
- Telecommunications Base Stations
- IT & Data Centers
- Wastewater Treatment
- Rail
- Oil & Gas
- LED Lighting

## Description

DC surge protector (also known as SPD or lightning protector) 1104-11-100 from Transtector is an IEC 61643-1 DIN-Rail style SPD that utilizes state of the art MOV technology to protect critical equipment that operates on a 600 Vdc electrical service. This surge protector provides effective protection against electrical transient surges that are generated both by external lightning events and by internal switching events and supports long-term system reliability by safely shunting high amounts of transient energy while maintaining a very low clamping voltage. Transtector DC surge protectors are available in stock with same day shipping.

## Electrical Specifications

Description	Minimum	Typical	Maximum	Units
Service Voltages		600		Vdc
Maximum Continuous Operating Voltage (MCOV)				
MCOV DC			800	Vdc

## Surge Protection Specification

Description	Minimum	Typical	Maximum	Units
Surge Protection Technology		MOV		
Surge Protection Modes		Supply to RET, Supply to GND, RET to GND		
Response Time			25	ns
8/20µs Surge Current			40	kA
VPL 8/20µs L-G			3,000	Vpk
Nominal Discharge Surge Current (In)		20		kA

Click the following link (or enter part number in "SEARCH" on website) to obtain additional part information including price, inventory and certifications:  
[DC Surge Protector SPD I2R Indoor DIN-Rail 600 Vdc, Full-Mode, 40 kA MOV IEC 61643-1 1104-11-100](#)

DC Surge Protector SPD I2R Indoor DIN-Rail 600 Vdc,  
 Full-Mode, 40 kA MOV IEC 61643-1

**1104-11-100**  
 I2R SPV600 3-40



## Mechanical Specifications

### Size

Height	3.54 in	[89.92 mm]
Width	2.12 in	[53.85 mm]
Depth	2.66 in	[67.56 mm]
Weight	0.74 lbs	[335.66 g]
Housing Material and Plating	PA66	

## Environmental Specifications

### Temperature

Operating Range	-40 to +80 deg C
Storage Range	-40 to +80 deg C
Environmental Protection (IP) Rating	IP20
Humidity	95% non-condensing

## Installation

Mount Type	DIN-Rail
Service Wiring Terminal	
Screw Clamp Terminal	#6 AWG Stranded
Service Terminal Wire 2	#4 AWG Solid
Status Indication Terminal	
3-Position Screw Terminal	#22 to #16 AWG

## Compliance Certifications

Certifications	IEC 61643-1 NOM
----------------	--------------------

Transtector Systems specializes in protection of highly sensitive, low voltage equipment through its patented, non-degrading silicon diode technology and custom filters. Our power quality expertise translates into a diverse product offering including AC, DC, and signal applications as well as integrated cabinets, power distribution panels and EMP hardened devices.

Click the following link (or enter part number in "SEARCH" on website) to obtain additional part information including price, inventory and certifications: [DC Surge Protector SPD I2R Indoor DIN-Rail 600 Vdc, Full-Mode, 40 kA MOV IEC 61643-1 1104-11-100](https://www.transtector.com/dc-surge-protector-spd-i2r-indoor-din-1104-11-100-p.aspx)

URL: <https://www.transtector.com/dc-surge-protector-spd-i2r-indoor-din-1104-11-100-p.aspx>

The information contained in this document is accurate to the best of our knowledge and representative of the part described herein. It may be necessary to make modifications to the part and/or the documentation of the part, in order to implement improvements. Transtector reserves the right to make such changes

Click the following link (or enter part number in "SEARCH" on website) to obtain additional part information including price, inventory and certifications: [DC Surge Protector SPD I2R Indoor DIN-Rail 600 Vdc, Full-Mode, 40 kA MOV IEC 61643-1 1104-11-100](https://www.transtector.com/dc-surge-protector-spd-i2r-indoor-din-1104-11-100-p.aspx)

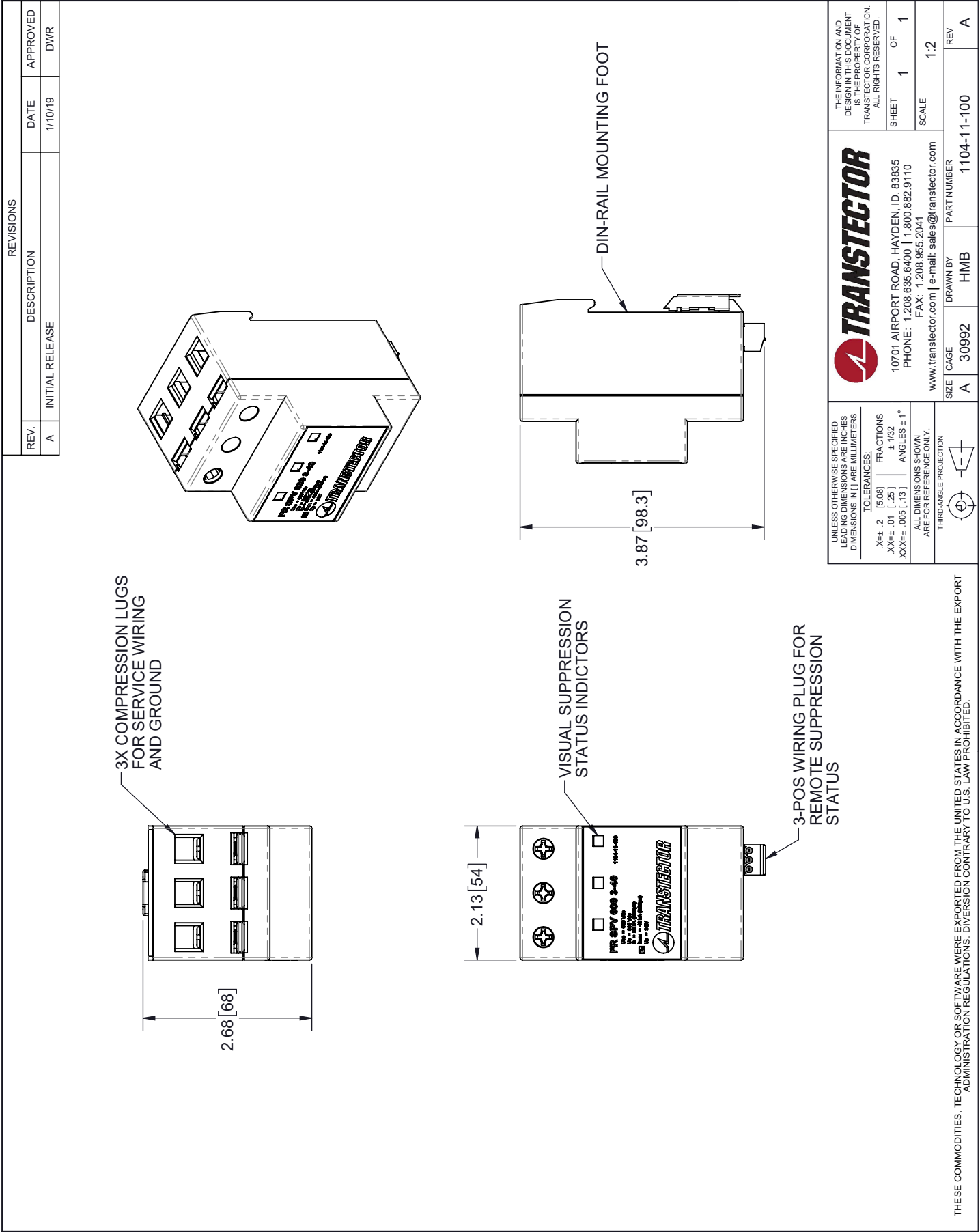
DC Surge Protector SPD I2R Indoor DIN-Rail 600 Vdc,  
Full-Mode, 40 kA MOV IEC 61643-1

**1104-11-100**  
I2R SPV600 3-40



as required. Unless otherwise stated, all specifications are nominal. Transtector does not make any representation or warranty regarding the suitability of the part described herein for any particular purpose, and Transtector does not assume any liability arising out of the use of any part or documentation.

1104-11-100 CAD Drawing



THESE COMMODITIES, TECHNOLOGY OR SOFTWARE WERE EXPORTED FROM THE UNITED STATES IN ACCORDANCE WITH THE EXPORT ADMINISTRATION REGULATIONS. DIVERSION CONTRARY TO U.S. LAW PROHIBITED.

T-Rev A